

DMUMC



DESIGNER LANDSCAPES, INC.

P.O. Box 61276
Durham, NC 27715-1276
(919) 383-9157

GREG SIMS

Trees

- Pruning 3 Magnolias + 1 Hickory
Remove 1 Magnolia = 750.00

- ~~Remove Hickory tree = 450.00~~
(reduce above to 650.00 if Hickory
is removed)

- stumps removed (2) = \$250.00 125
- \$125. each -

= \$1,000.00 \$875.

DM.U.M.C.



DESIGNER LANDSCAPES, INC.

P.O. Box 61276
Durham, NC 27715-1276
(919) 383-9157

GREG SIMS

office front planting

2 - Dwarf Oxford Holly	18.5	126.-
1 - camellia		20.-
55 - Liriope	1.85	101.25
10 - Sherwood Azalea	12.-	120.-
3 - Danchin Azaleas	13.-	39.-
1 - Serviceberry (6-7' tall)		25.-
10 - soft touch Holly	13.-	130.-
9 - Gulfstream Nandina	18.-	162.-
Soil		100.-
Mulch		200.-
Misc		50.-

1123.25

Tax 67.43

Labour

- Plant Removal	\$ 2000.00
- Bed Prep.	\$ 3,191.18
- Plantings	=
- Debris Removal	
- Bobcat	



DESIGNER LANDSCAPES, INC.

P.O. Box 61276
Durham, NC 27715-1276
(919) 383-9157

GREG SIMS

west sanctuary planting

1 - white Dogwood.		130.-
2 - Kousa Dogwood.		130.-
10 + Azaleas	13.-	130.-
- Soil		15.-
- Mulch - entire bed		125.-
- Misc		25.-
		<u>555.00</u>

Tax 33.30

Labour

750.00

1,338.30

Fellowship Hall

8 - Needle Point Holly	5g	45.-	360.-
6 - Carriessa Holly		13.-	78.-
4 - Dwarf Burford Holly		18.-	72.-
2 - Dwarf. Yaupon Holly		13.-	26.-
Soil		25.-	25.-
Mulch			125.-
Misc			35.-
			<u>721.00</u>

Tax 46.24

Labour -

1300.00

Plant Removal

2,117.24

Bed Prep - soil

=

Plant + mulch



DESIGNER LANDSCAPES, INC.

P.O. Box 61276
Durham, NC 27715-1276
(919) 383-9157

GREG SIMS

west side of Fellowship Hall

135 - Liriope var.	1.85	249.75
3 - Dwarf Yaupon Holly	13.5	39.00
2 - Needle pt. Holly	45.0	90.00
Soil		30.00
Mulch		90.00
Misc		<u>20.00</u>
		518.75

Tax 31.12

Labor:

825.00

- Remove boxwoods at \$1,374.87

North end of Building

replace w/ Holly

\$1,375.00

- Remove boxwood by
landing

- Plant Liriope between
boxwoods @ windows

- Mulch beds.

- Prune abelia back

+ Check drip system - any repairs will
be additional.



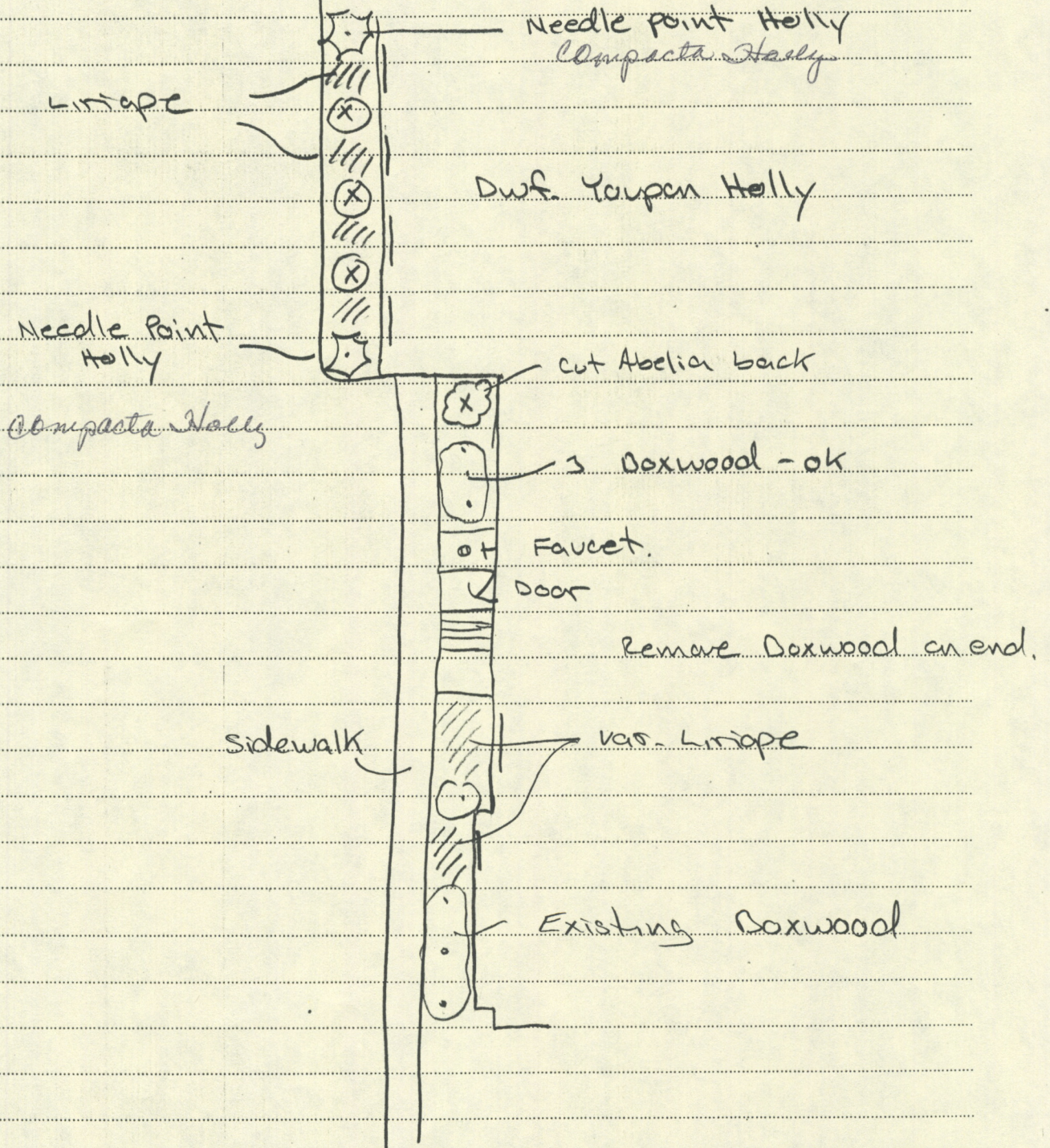
DESIGNER LANDSCAPES, INC.

P.O. Box 61276
Durham, NC 27715-1276
(919) 383-9157

GREG SIMS

West Side of Fellowship Hall

3 Existing Crepe Myrtle





DESIGNER LANDSCAPES, INC.

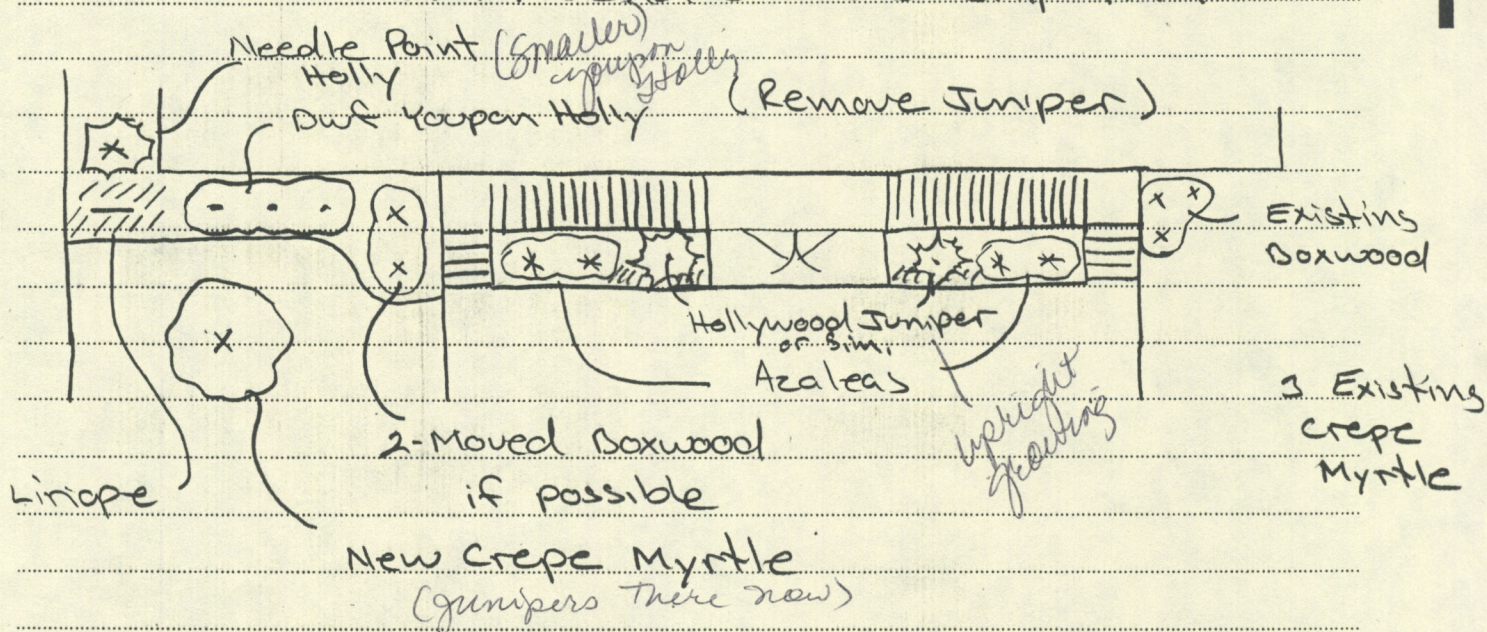
P.O. Box 61276

Durham, NC 27715-1276

(919) 383-9157

GREG SIMS

North End of Fellowship Hall



1	Needle Point Holly	45.-	45.-
3	Dwarf Yaupon Holly	13.-	39.-
1	Crepe Myrtle lg	25.- +	75.-
4	Azaleas	13.-	52.-
2	Hollywood Juniper	45.-	90.-
2	New Boxwoods if needed	90.-	180.- compacta Holly
18	Liriope	1.85	33.30
	Soil		30.-
	Mulch		65.-
	Misc		25.-
			634.30
	Tax		38.06
	Labor -		875.00
			<u>1,547.36</u>
			=



DESIGNER LANDSCAPES, INC.
 P.O. Box 61276
 Durham, NC 27715-1276
 (919) 383-9157
GREG SIMS

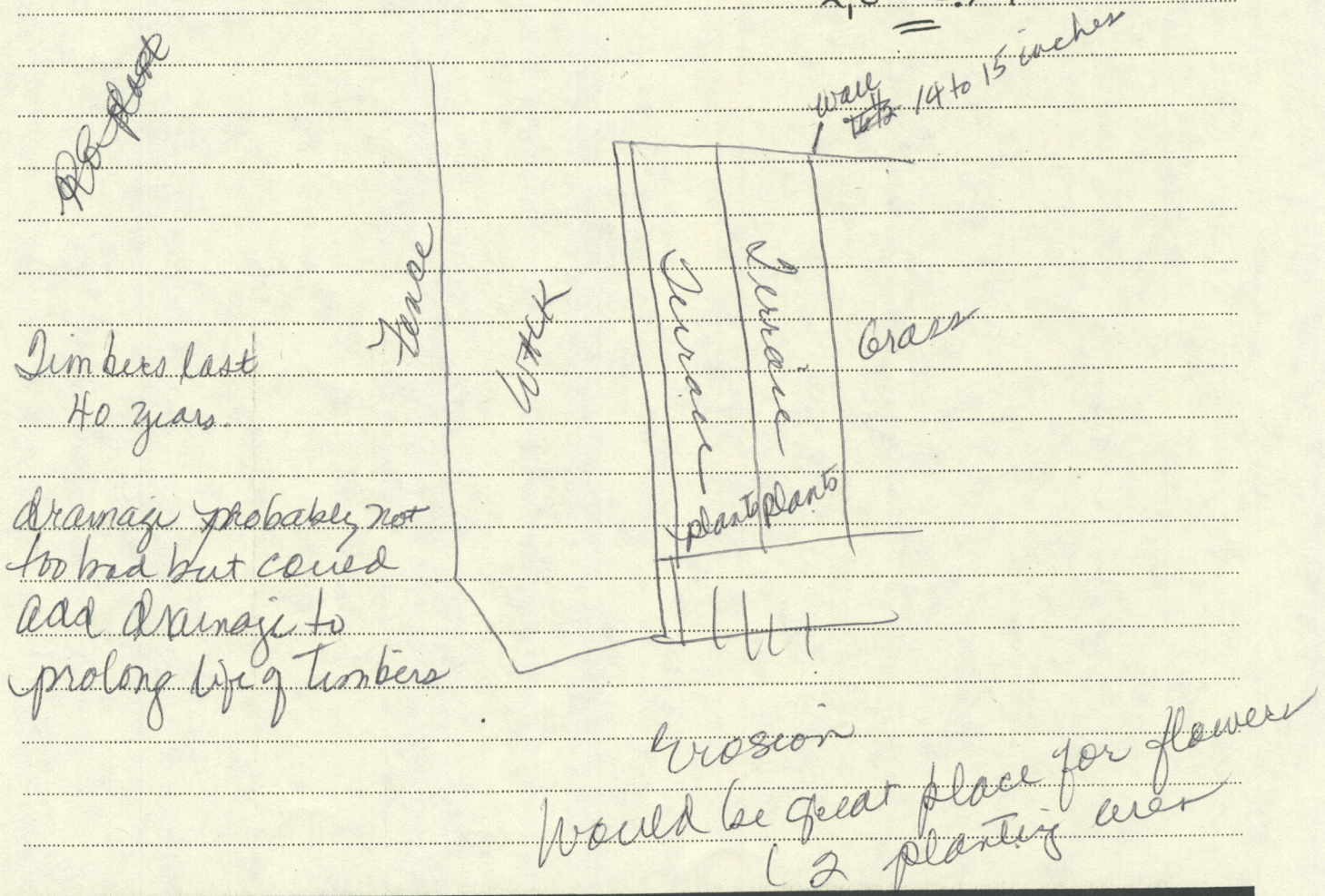
Retaining wall - North side Entrance

27 - 4x6x12 @	18.5	486.5
Soil	+ -	50.5
Mulch		80.5
+ - 20 shrubs	14.5	280.5
Misc.		50.5
		<u>946.00</u>

Tax 56.76

Labor

1,800.00
\$ 2,802.76





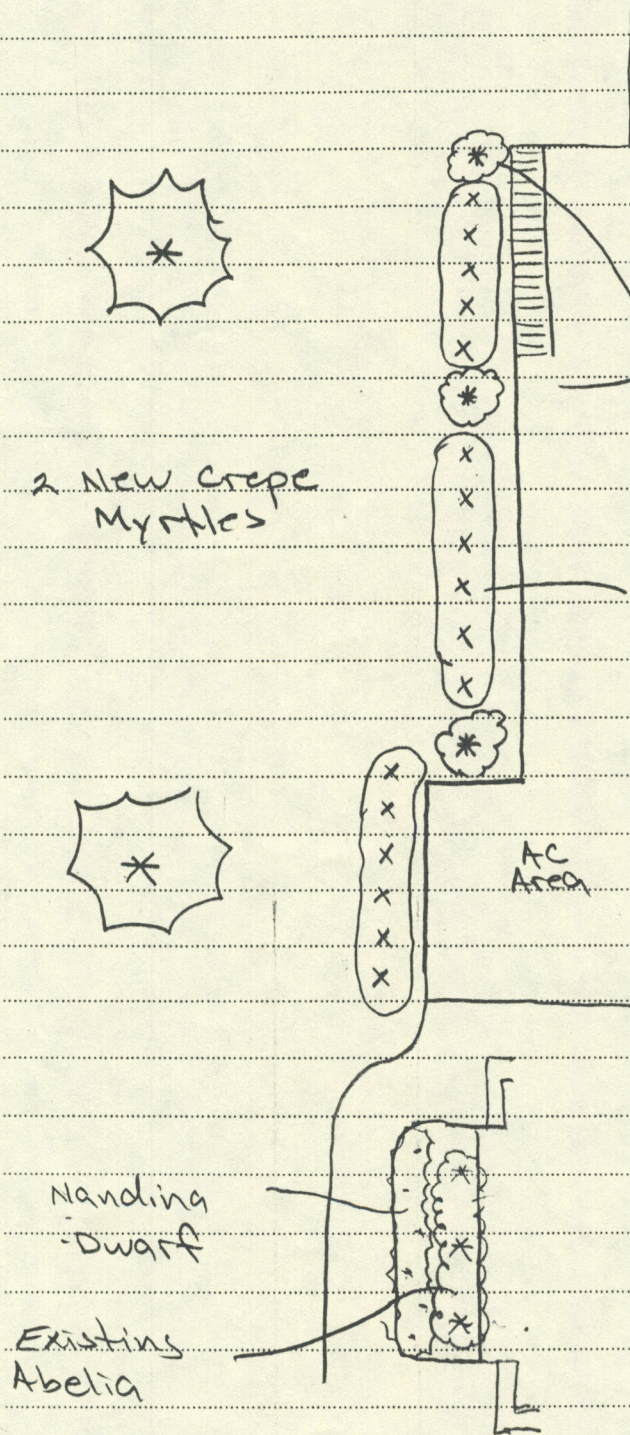
DESIGNER LANDSCAPES, INC.

P.O. Box 61276
 Durham, NC 27715-1276
 (919) 383-9157

GREG SIMS

East Side of Sanctuary

Rd 0900 x 6R



3 Needle point Holly
or
similar

2 New Crepe
Myrtles

17 - Dwarf Yaupon Holly

+ Remove Ligustrum &
Abelia.

17 Dwarf Yaupon Holly	13	221.-
3 Needle Pt. Holly	20-	60.-
6 Dwarf Nandina	12-	92.-
2 Crepe Myrtles	55-	110.-
Soil		50.-
Mulch		145.-
Misc.		20.-
		678.-

Tax 40.68

Labor

1300.00

\$2,018.68



DESIGNER LANDSCAPES, INC.

P.O. Box 61276
Durham, NC 27715-1276
(919) 383-9157

GREG SIMS

Columbarium Pavers
as / Design

Cross \approx 300 sq'

walks \approx 900 sq'

Benches \approx 90 sq'

\approx 1,290 sq'

@ 12.00/sq'

\approx \$15,480.00

Plantings - w/in Columbarium

\approx \$1,500. - + -



DESIGNER LANDSCAPES, INC.

P.O. Box 61276
Durham, NC 27715-1276
(919) 383-9157

GREG SIMS

Totals

Trees	=	\$ 1,000.00
west Sanctuary Plantings	=	\$ 1,350.00
Office Plantings	=	\$ 3,200.00
Fellowship Hall	=	\$ 2,100.00
west side of Fellowship Hall	=	\$ 1,375.00
North End of Fellowship Hall	=	\$ 1,550.00
Retaining wall on North side	=	\$ 2,800.00
East side of Sanctuary	=	\$ 2,000.00
Columbarium Pavers	=	\$ 15,480.00
Columbarium Plantings	=	\$ 1,500.00

Total = \$ 32,355.00
=