

# DM Youth and Soul Café Suite

## Proposal for Upfit – June 13, 2006

### Summary

As approved by the Administrative Board, the Duke Memorial Youth Program and the Multi-Generational Soul Café will relocate to the current Community Life Center by September 1, 2006. This proposal seeks to insure that these two critical programs are given every opportunity to thrive by providing a clean, safe and inviting environment in a timely manner.

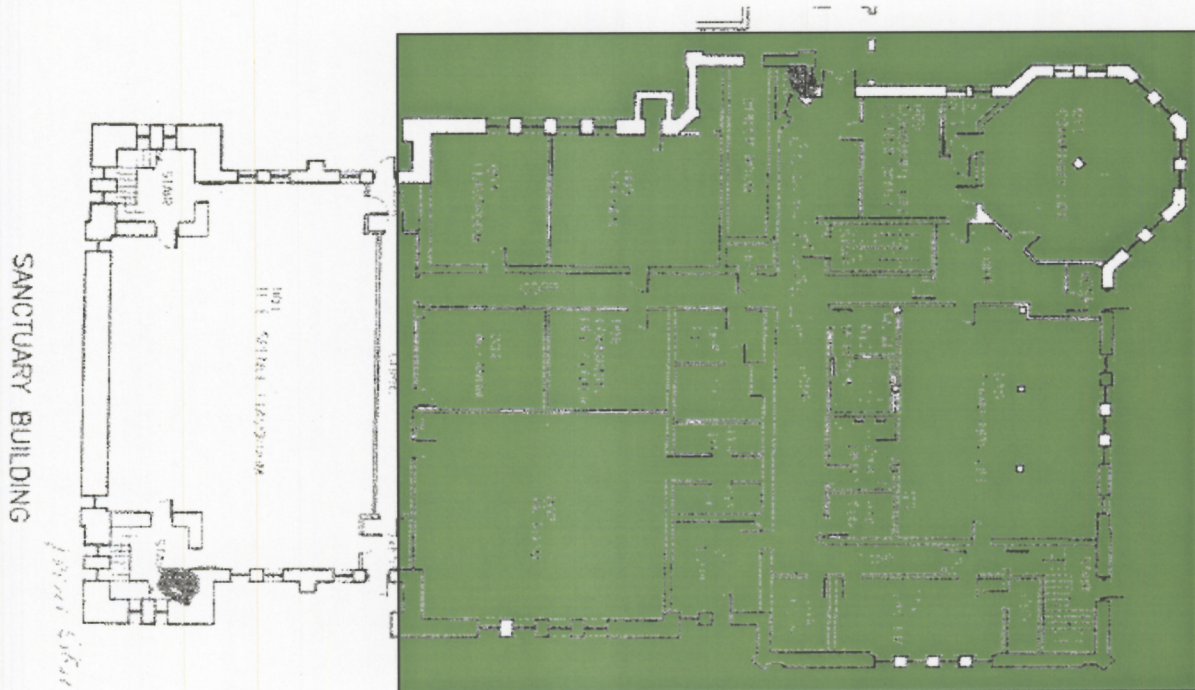
### Scope of Project

This move represents more than rearranging furniture and painting walls. Rather, this is a major shift of the focal-point of our church. As downtown Durham begins to revitalize with hundreds of new upscale condos, Duke Memorial is poised to become a destination-location for our new neighbors. We should feel proud to open our back doors to this new community. We hope to seize this opportunity to professionally transform this entire area into the new face of Duke Memorial.



## Costs

**Green Option** - provides costs for the highlighted section of the basement which covers 2/3 of the usable space. The H. E. Spence classroom is left as is. This option also provides costs for refurbishing stairwell to sanctuary.



### **Clean up/ Shell Preparation:**

**\$2,500 – Floor stripping**

**\$ 500 - Dumpster rental**

**\$3,000 – Electrical / lighting**

**\$7,800 – Painting – prep and paint** → 8,600

**\$1,100 - Plumbing**

**\$2,000 – Awning for entryway and landscaping**

**\$3,300 – Stage / seating area (material cost only) construction by DM volunteers**

**\$1,800 - Dishwasher and Refrigerator**

**\$22,000 - Total estimated costs for Green Option**

\$22,800

### Essential Elements

With a professionally refurbished shell in place, the Soul Café / Youth suite will need basic items to complete the environment. While DM volunteers will provide labor to complete the transformation of this new space into an inviting environment, funding for the following essential items must be secured:

**\$3,500 - Soul Café soft furnishings**

**\$1,200 – Folding chairs**

**\$3,400 – Audio/Visual equipment for church-wide use**

**\$900 – Professional-grade coffee maker**

**\$500 - Soul Café coffee mugs**

**\$4,500 – Youth Area furnishings**

**\$14,000 - Total estimated costs for essential needs**