

— Memorial Methodist Church Lot. —
 — formerly —
 — Part of W.T. Blackwell Home Place. —
 — W.T. Blackwell to W.T. Blackwell, Jr. see Book 9, page 20. + BK 29 p 187 —
 — W.T. Blackwell (Jr) to S.W. Minor see Book 35 p. 200. —

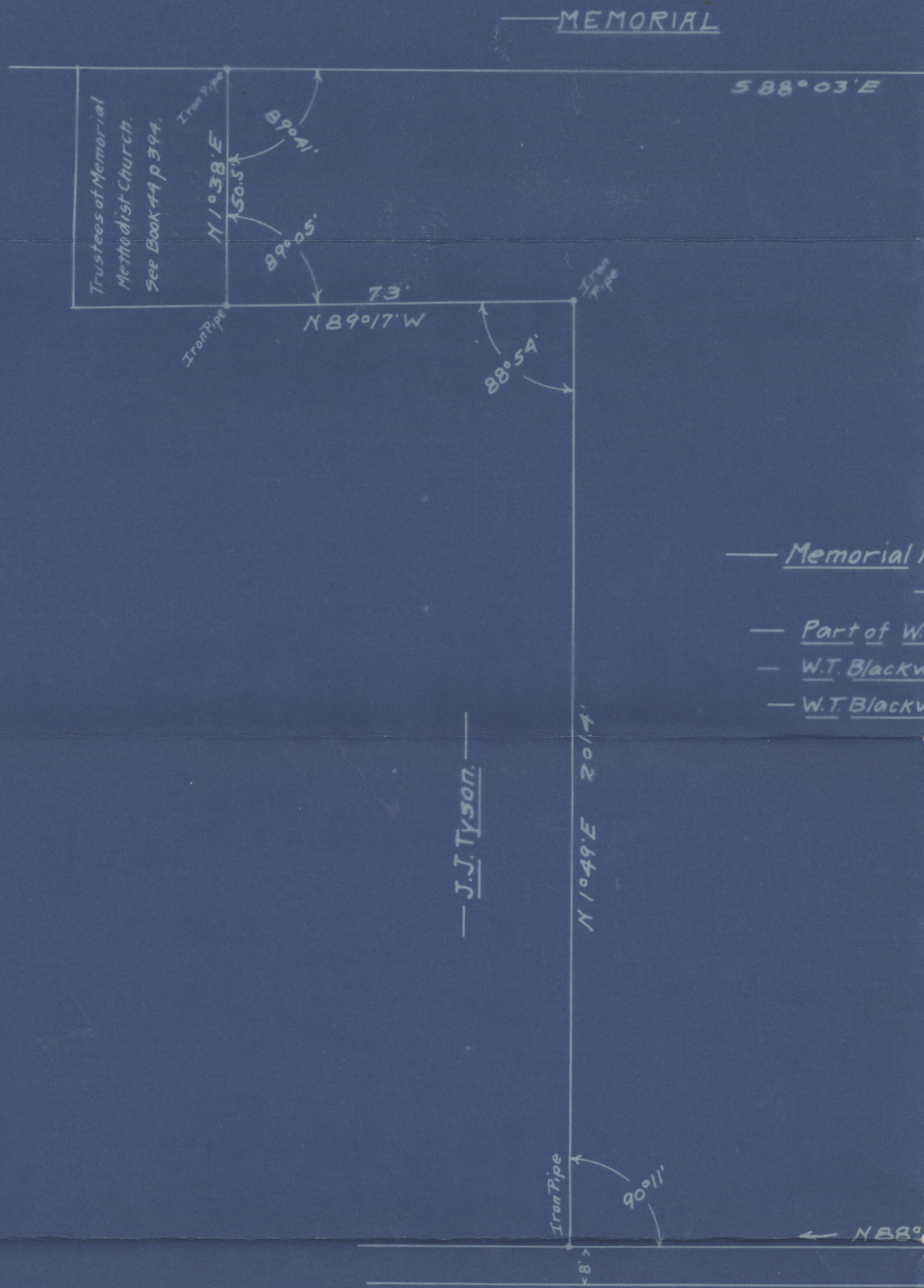
— J.J. Tyson. —

Ded. 2002 W.

North Carolina:
 Durham County:

Personally appeared before me Wm. M. Piatt who, being by me duly sworn, says: that he is a surveyor; that he made this plat; that the

— Plat of —
 — Memorial Methodist Church Lot —
 — in the —



North Carolina:
Durham County:

Personally appeared before me Wm. M. Piatt who, being by me duly sworn, says: that he is a surveyor; that he made this plat; that the same is in all respects true and was prepared from an actual survey made by him; and that the variation of the magnetic needle is shown and is correct.

Let this plat be registered.
Witness my hand this

Clerk of Superior Court. —

STREET.



Methodist Church Lot.

formerly —

Blackwell Home Place.

ell to W.T. Blackwell, Jr. see Book 9, page 20. + Bk 29

ell (Jr) to S.W. Minor see Book 35 p. 200.

52° 38' W 250.4'

2 Curb Stone

STREET.

DUKE

Decl. 2002' W.

197.8'



2 Curb Stone

HILL

STREET.

— Plat of —
 — Memorial Methodist Church Lot —
 — in the —
 — City of Durham, N.C. —
 — May 2, 1914 Scale 30' = 1" —

— Office of —
 — Wm. M. Piatt, E.E., M.S. —
 — Durham, N.C. —