

Duke Memorial United Methodist Church
504 West Chapel Hill Street, Durham, North Carolina 27701

Mark W. Wethington, Pastor
Lisa Brown Cole, Associate Pastor

Robert J. Irvine, Diaconal Minister of Music
Ann C. Stallings, Assistant in Ministry
Janet Thornton Irvine, Program Director

SERVICE OF THE WORD
TWENTY-FIFTH SUNDAY AFTER PENTECOST
NOVEMBER 17, 1996

TOWER BELLS
WORSHIP

10:30 a.m.
10:55 a.m.

ENTRANCE AND PRAISE

GATHERING

WELCOME AND ANNOUNCEMENTS

GREETING

The grace of the Lord Jesus Christ be with you.

AND ALSO WITH YOU.

The risen Christ is with us.

PRAISE THE LORD!

OPENING VOLUNTARY

“If Thou But Suffer God to Guide Thee”

Harold Vetter

The cross and light precede us from the world into the sanctuary and from the sanctuary into the world.

The cross symbolizes the triumph of Christ. The light signifies God's presence with us.

*PROCESSIONAL HYMN NO. 73

“O Worship the King”

LYONS

*OPENING PRAYER NO. 570

“Prayer of Ignatious of Loyola”

*PSALTER NO. 797

Psalm 76

ANTHEM

“Sing to the Lord a Joyful Song”

Hal H. Hopson

PROCLAMATION OF THE WORD

PRAYER FOR ILLUMINATION

**LORD, OPEN OUR HEARTS AND MINDS BY THE POWER OF YOUR HOLY SPIRIT,
THAT, AS THE SCRIPTURES ARE READ AND YOUR WORD PROCLAIMED, WE MAY
HEAR WITH JOY WHAT YOU SAY TO US TODAY. AMEN.**

EPISTLE LESSON

1 Thessalonians 5:1-11

CHILDREN'S RESPONSE

Janet Thornton Irvine

*HYMN NO. 87

“What Gift Can We Bring”

ANNIVERSARY SONG

(First graders may leave to attend Worship Education.)

*GOSPEL LESSON

Matthew 25:14-30

SERMON

"Reckless Extravagance"

Lisa Brown Cole

RESPONSE TO THE WORD

RECOGNITION OF ACOLYTES

*GLORIA PATRI NO. 71

"Glory Be to the Father"

GREATOREX

PARISH CONCERNS AND PRAYERS OF THE PEOPLE

GIVING OF OUR TITHES AND OFFERINGS

OFFERTORY ANTHEM

"Kyrie" (Missa Brevis)

Andrea Gabrieli

*DOXOLOGY NO. 587

"Bless Thou the Gifts"

DEUS TUORUM MILITUM

*PRAYER OF THANKSGIVING

SENDING FORTH

*HYMN NO. 399

"Take My Life, and Let It Be"

MESSIAH

*BENEDICTION

*BENEDICTION RESPONSE

"Dona Nobis Pacem"

DONA NOBIS PACEM

*GOING FORTH

*CLOSING VOLUNTARY

"Rigaudon"

Andre Campra

Our service of worship has ended. Our worship through service begins.

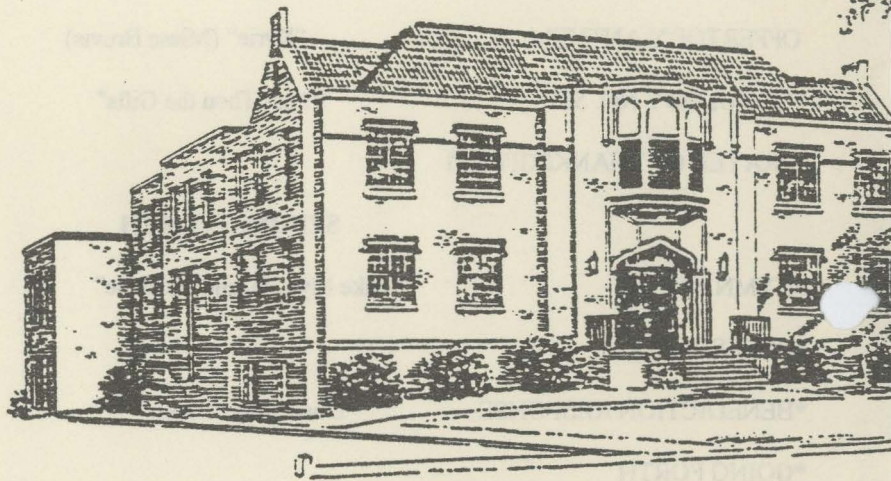
*Congregation is invited to stand.

WELCOME: You are warmly welcomed to Duke Memorial United Methodist Church. Please sign the registration pad when it is passed to you. As it returns, note who is seated on your pew so you may speak to them after the service. Visitors, please give us your address so that we may share additional information about Duke Memorial with you.

LARGE PRINT BULLETINS AND HYMNALS ARE AVAILABLE FOR THE VISUALLY IMPAIRED. FM SOUND ENHANCEMENT PERSONAL RECEIVERS ARE AVAILABLE FOR THE HEARING IMPAIRED. PLEASE ASK ANY USHER FOR ASSISTANCE.



We are a Stephen Ministry Congregation.



THE GENERAL RULE OF DISCIPLESHIP

To witness to Jesus Christ in the world, and to follow his teachings, through acts of compassion, justice, worship and devotion, under the guidance of the Holy Spirit.

Randy Blanchard, Financial Secretary
Mary Anne Holmes, Receptionist/Secretary
Louis Robinson, Operations Coordinator

Al Buchler, Chimer
Stuart McCracken, Chimer
Eric McFall, Sound Technician

Church Office Hours
9:00 a.m. - 4:30 p.m. Monday - Thursday
9:00 a.m. - 1:00 p.m. Friday

Church Office Phone (919) 683-3467
Church FAX Number (919) 682-3349