

A SERVICE OF WORD AND TABLE

Entrance and Praise

Voluntary

Opening Sentences

L: The grace of the Lord Jesus Christ be with you.
P: And also with you.
L: The risen Christ is with us.
P: Praise the Lord!

Hymn: "Rise Up, O Saints of God" p. 124 (CCW)

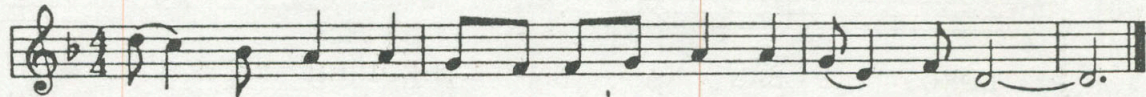
Prayer

Proclamation and Praise

Psalm

Psalm 8

Antiphon



Lord, our Lord, how splen-did is your name in all the world!

Gospel Lesson

Mark 7:1-8, 14-15, 21-23

Sermon

Responses and Offerings

Intercessions

The Peace

Offertory "God Is My Strong Salvation" Austin Lovelace
(based on an old Southern folk hymn from The Sacred Harp, 1844)

God is my strong salvation: What foe have I to fear?
In darkness and temptation: My light, my help is near:
Though hosts encamp around me, Firm in the fight I stand;
What terror can confound me, With God at my right hand?
Place on the Lord reliance; My soul with courage wait;
His truth be thine affiance, When faint and desolate;
His might thy heart shall strengthen, His love thy joy
increase;
Mercy thy days shall lengthen; The Lord give thee peace.

The Holy Meal

Great Thanksgiving

L. The Lord be with you.
P. And also with you.
L. Lift up your hearts
P. We lift them to the Lord.
L. Let us give thanks to the Lord our God.
P. It is right to give our thanks and praise.

"...we acclaim you and glorify your name as we sing."

Sanctus

C Am G C F-3 G
HO LY HO LY, HO LY LORD, GOD OF POW-ER AND MIGHT,

C-3 Am-3 Dm
HEAV-EN AND EARTH ARE FULL OF YOUR GLO-RY HO SAN NA IN THE

G C Em F C
HIGH EST BLESS ED IS HE WHO COMES IN THE NAME OF THE

G7 C Dm Em F Dm C
LORD. HO SAN NA IN THE HIGH EST!

"...in mystery of faith."

(Acclamation)
C Am C Dm7 Bb C
CHRIST HAS DIED CHRIST HAS RIS EN CHRIST WILL COME A GAIN

"...Almighty Father, now and for ever.
(Amen.)

C Dm C
A MEN A MEN, A MEN.

Lord's Prayer

The Fraction

Communion (Hymns 314, 330)

Doxology with Alleluias

Dismissal with Blessing

Voluntary

* * * * *

Liturgist

Reader

Servers

Presiding minister

Organist, choir director

Read provided by Paule Gilbert

Ted Troutman

Gayle Krause

Rick Helton, Ed Briggs, Lisa Brown

Kelli Walker-Jones

David Arcus