


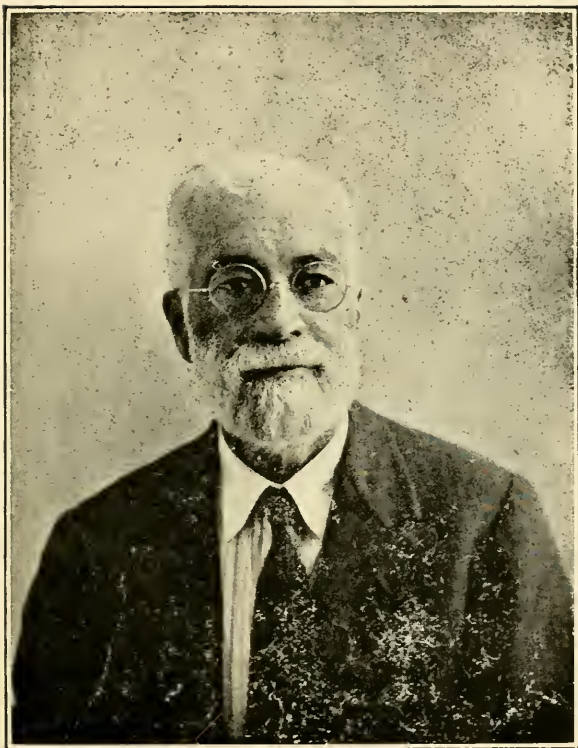


Presented by

Board of Missions of The Methodist Ch.
LIBRARY
475 RIVERSIDE DR., NEW YORK 27, N.Y.



Digitized by the Internet Archive
in 2010 with funding from
Drew University with a grant from the American Theological Library Association



REV. EDDY HORACE GREELEY B.A., D.D.,
Missionary in Liberia and
Southern Rhodesia 1888-1938
Member of the Rhodesia Conference for twenty-one years.



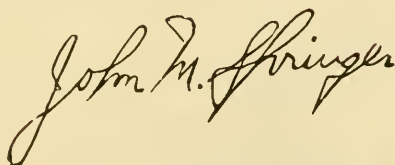
OFFICIAL JOURNAL
OF THE
EIGHTH SESSION
OF THE
RHODESIA ANNUAL CONFERENCE
OF THE
METHODIST EPISCOPAL CHURCH

Historical Note: The Rhodesia Conference is the continuation of ten sessions of the East Central Africa Mission Conference and fourteen sessions of the Rhodesia Mission Conference.

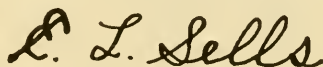
Held in Old Umtali

S. Rhodesia, South Africa

October 5th to 11th, 1938



PRESIDING BISHOP



SECRETARY

TABLE OF CONTENTS

| | PAGE |
|--|---------------|
| I. OFFICERS OF THE CONFERENCE | |
| (a) Of the Annual Conference | 180 |
| (b) Of Lay Conference | 180 |
| II. BOARDS, COMMISSIONS, AND COMMITTEES | |
| (a) United Session..... | 180 |
| (b) Annual Conference | |
| 1. Standing Committees..... | 182 |
| 2. Conference Societies..... | 183 |
| III. DAILY PROCEEDINGS | 184-195 |
| IV. DISCIPLINARY QUESTIONS | |
| (a) Of the United Session of the Annual and Lay Conferences. | 196 |
| (b) Of the Annual Conference | 198-202 |
| V. APPOINTMENTS | 203-212 |
| VI. REPORTS | |
| (a) District Superintendents | 213-241 |
| (b) Standing Committees and Boards | 241-248 |
| (c) Special Committees..... | 248 |
| (d) Conference Statistician | Following 268 |
| (e) Conference Treasurer | 248 |
| (f) Other Treasurers | 249 |
| (g) Miscellaneous | 249 |
| VII. MEMOIRS | 250 |
| VIII. ROLL OF THE DEAD | |
| (a) Members of Conference | 252 |
| (b) Widows of Deceased Members | 252 |
| Wives of Members | 252 |
| (c) Other Workers | 252 |
| IX. HISTORICAL | |
| (a) Conference Sermons | 253 |
| (b) Former Members and Probationers | 253 |
| (c) Conference Sessions | 253 |
| (d) General | |
| Delegates to General Conference | 254 |
| Entire List of Missionaries 1898-1938 | 254 |
| X. MISCELLANEOUS | |
| (a) Plan of Conference Examinations | |
| European | 256 |
| Native | 257 |
| Local Preachers..... | 258 |
| (b) Conference Rules of Order | 259 |
| (c) Supplies and Local Preachers | 259 |
| (d) Lay Conference | 260 |
| (e) Conference and Missionary Roll | 261 |
| XI. PASTORAL RECORD | 264-267 |
| XII. INDEX | 268 |

PART I

OFFICERS OF THE CONFERENCE

(a). Of the Annual Conference

President — Bishop John M. Springer, D.D.

Secretary — E. L. Sells, P. O. Box 55, Umtali

Statistician — R. C. Gates, Old Umtali

Treasurer — H. I. James, Mrewa

Registrar — T. A. O'Farrell, P. B. 136 E. Salisbury

(b). Of the Lay Conference

President — Lewis Tsododo, Mutambara

Secretary — Solomon Machingura, P. O. Box 333 Salisbury

* * *

PART II

BOARDS, COMMISSIONS and COMMITTEES

A. United Session

The Cabinet

Resident and Presiding Bishop, John M. Springer, Umtali,
S. Rhodesia

The District Superintendents:

H. I. James, Mrewa; W. Bourgaize, Mtoko; T. A. O'Farrell, P. B. 136 E Salisbury; M. J. Murphree, Old Umtali; E. L. Sells, P. O. Box 55, Umtali.

Committee on the State of the Church

| | |
|--------------------|-----------------|
| T. A. O'Farrell | Jackson Rugayo |
| G. A. Roberts | B. Katsidzira |
| Hosea Katsidzira | Jonah Chitombo |
| Patrick Machiri | H. I. James |
| Mrs. G. A. Roberts | M. J. Murphree |
| Mrs. H. I. James | E. L. Sells |
| Z. Mukombiwa | Silas Kasambira |
| Thomas Marange | |

Board of Sunday Schools

| | |
|----------------------|------------------|
| Miss P. Mullikin | Miss Grace Clark |
| Mrs. T. A. O'Farrell | Jackson Rugayo |
| Jonah Chitombo | W. Bourgaize |
| Mrs. H. I. James | Samuel Chieza |
| Luke Chieza | Miss F. Quinton |
| Mrs. E. L. Sells | Patrick Machiri |
| Thomas Marange | Miss Lois Pfaff |

Board of Education

(Term expiring)

| 1939 | 1940 | 1941 |
|------------------|---------------------|-----------------|
| C. E. Faku | H. I. James | Miss Sarah King |
| Miss Grace Clark | Miss Jessie Pfaff | Titus Maranke |
| C. W. Huie | J. G. Nduna | Miss F. Quinton |
| Mrs. C. W. Huie | Miss Fannie Ellener | M. J. Murphree |
| | | T. A. O'Farrell |

Board of Stewards

(Term expiring)

| 1939 | 1940 | 1941 |
|-----------------|-----------------|----------------|
| H. E. Taylor | M. J. Murphree | Samuel Chieza |
| Abraham Kawadza | T. A. O'Farrell | Jackson Rugayo |
| Jonah Mukonorwe | Titus Maranke | R. C. Gates |
| H. I. James | | |

Committee on Hospitals and Medical Work

| | |
|--------------------|--------------------|
| Miss Ona Parmenter | Miss Alice Whitney |
| Mrs. H. I. James | G. A. Roberts |
| Miss Ruth Hansson | Thomas Marange |
| Miss Irene Gugin | Moses Mparutsa |
| Miss Oril Penney | Miss Rosa Rydell |
| Enoch Munjoma | |

Committee on Auditing

| | |
|---------------|----------------|
| John Nduna | Jonah Chitombo |
| R. C. Gates | B. Katsidzira |
| Luke Chieza | Samuel Chieza |
| Lewis Tsododo | |

Historical Committee

| | |
|-----------------|------------------|
| E. L. Sells | Miss P. Mullikin |
| G. A. Roberts | C. Faku |
| H. I. James | J. Chimbadzwa |
| T. A. O'Farrell | Thomas Marange |
| Miss F. Quinton | Isaiah Munjoma |

Committee on Publications

| | |
|-------------------------------|---------------------|
| The Mission Finance Committee | Mrs. H. E. Taylor |
| Editor of the Umbowo | Mrs. M. J. Murphree |
| | Miss B. Reitz |

Committee on Resolutions

| | |
|------------------|------------------|
| Mrs. E. L. Sells | Samuel Chieza |
| G. A. Roberts | Miss Edith Parks |
| Miss Sarah King | Miss Lois Jessop |
| Moses Mparutsa | |

Committee on Memoirs

| | |
|------------------|--------------------|
| J. Chimbadzwa | Miss Lois Pfaff |
| Mrs. R. C. Gates | Mrs. G. A. Roberts |
| R. Ngonyama | |

Commission on Worship and Music

| | |
|---------------------|----------------------|
| Miss Jessie Pfaff | Amos Kapenzi |
| Titus Maranke | Mrs. H. I. James |
| Mrs. M. J. Murphree | Mrs. T. A. O'Farrell |

B. Annual Conference**1. Standing Committees****Committee on Conference Relations**

| | |
|-----------------|----------------|
| T. A. O'Farrell | Samuel Chieza |
| M. J. Murphree | R. C. Gates |
| Isaiah Darikwa | J. Chimbadzwa |
| G. A. Roberts | Thomas Marange |

Committee on Accepted Supply Pastors

| | |
|-------------|----------------|
| H. I. James | J. Chimbadzwa |
| E. L. Sells | Thomas Marange |
| C. Faku | M. J. Murphree |

Triers of appeals

| | |
|----------------|---------------|
| H. I. James | (Reserves) |
| B. Katsidzira | C. Faku |
| Thomas Marange | G. A. Roberts |
| John Nduna | |
| M. J. Murphree | |

Board of Ministerial Training

| | |
|-----------------|------------------|
| H. I. James | E. L. Sells |
| W. Bourgaize | M. J. Murphree |
| T. A. O'Farrell | J. M. Chimbadzwa |
| R. C. Gates | C. E. Faku |

Committee on Interdenominational Relations

The District Superintendents
 Isaiah Darikwa
 Titus Maranke

Committee on Conference Programme

The Entertaining Pastor and District Superintendent

2. Conference Societies

The Native Christian Convention

Chairman — J. M. Chimbadzwa

Secretary — John Nduna

Treasurer — Amos Kapenzi

Missionary Advisory Members :-

Miss Sarah King and R. C. Gates

Rukwadzana rwe Wadzimayi rwe Methodist Episcopal Church Secretaries :

Northern Section — Mrs. M. M'parutsa

Assistant — Mrs. E. Munjoma

Southern Section — Mrs. O. Chimonyo

Assistant — Mrs Titus Maranke

Missionary Advisors : Mrs. H. I. James, Mrs. T. A. O'Farrell, Mrs. E. L. Sells, and Mrs. M. J. Murphree

African Missionary Society of the Methodist Episcopal Church in Rhodesia.

Chairman — J. M. Chimbadzwa

Secretary — John Nduna

Treasurer — Amos Kapenzi

PART III

DAILY PROCEEDINGS

The Eighth Session of the

RHODESIA ANNUAL CONFERENCE

First Day,—Wednesday, October 5th 1938

The eighth session of the Rhodesia Annual Conference of the Methodist Episcopal Church convened at Old Untali, Wednesday, October 5th, 1938 at 9.0 a.m., Bishop John M. Springer D.D. presiding.

Communion Service.—Hymn No. 1, "Holy, Holy, Holy" was sung. The Bishop assisted by several Elders conducted the Communion Service and administered the Sacrament of the Lord's Supper. The service closed with the Benediction at 10.0 o'clock.

Recess.—The Conference went into recess and reconvened at 10.45 o'clock.

Roll Call.—The Bishop requested the Secretary of the last Conference to call the roll. The following were present:

| | |
|---------------------|------------------|
| H. I. James | Phillip Chieza |
| T. A. O'Farrell | Samuel Chieza |
| M. J. Murphree | Amos Kapenzi |
| W. Bourgaize | Moses M'parutsa |
| H. E. Taylor | John Nduna |
| E. L. Sells | Hosea Katsidzira |
| David Mandisodza | Patrick Machiri |
| Thomas Marange | Johnson Maramba |
| Isaiah Munjoma | Enoch Munjoma |
| Isaiah Darikwa | Jackson Rugayo |
| C. E. Faku | Silas Kasambira |
| Benjamin Katsidzira | Obadiah Chimonyo |
| Titus Marange | Jonah Machiri |
| Reginald Ngonyama | Luke Chieza |
| Josiah Chimbadzwa | M. E. Persons |
| Zechariah Mukombiwa | |

Missionaries

Miss Pearl Mullikin

Miss Beulah Reitz

| | |
|----------------------|---------------------|
| Mrs. T. A. O'Farrell | Miss Sarah King |
| Mrs. H. I. James | Miss Oril Penney |
| Mrs. H. E. Taylor | Miss Jessie Pfaff |
| Mrs. M. J. Murphree | Miss Alice Whitney |
| Miss Ruth Hansson | Miss Irene P. Gugin |
| Mrs. E. L. Sells | Miss Lois Pfaff |
| Miss Frances Quinton | Mr. Carl Huie |
| Miss Lulu Tubbs | Mrs. Carl Huie |
| Miss Ona Parmenter | Miss Lois Jessop |

Accepted Supply Pastors

| | |
|---------------|---------------|
| Silas Chitiyo | Thomas Matara |
| Nason Chigubu | Job Gondora |
| Amos Kajese | Paul Maviza |
| Ebson Zimonde | |

Organization

Secretary—On nomination of H. I. James, E. L. Sells was elected Secretary. On nomination of the Secretary, Amos Kapenzi was elected the assistant.

Hours of Session.—On motion of T. A. O'Farrell, the hours of session were designated as from 8.30 a. m. to 12. 0 noon, with a recess at 10.0 o'clock.

Greetings.—The Bishop conveyed to the Conference the Greetings of the Liberia Conference, the Angola Conference, the Congo Conference and the Southeast Africa Conference.

Presentations and Introductions.—The Bishop presented the Missionaries who have returned from furlough during the year; Miss Irene Gugin, Miss F. Quinton and Miss B. Reitz. He introduced the new Missionaries; Miss Rosa Rydell, Miss Edith Parks, Mr. and Mrs. P. B. Christian.

The Conference sang the Doxology

Unification.—The Bishop spoke on Unification and expressed a great joy that it was so near being achieved. He announced the date of the Unifying Conference and explained the representation of the Conferences in Mission Fields.

Question Thirty—four.—"Was the character of each Preacher examined?"

The Bishop called the names of all the members of Conference and the Missionaries and their characters were passed.

Question Nos.—20, 21, 22, 23, 42, 45, 2, 3, 8, 9, 12, and 14 were asked and answered in the negative.

The Bar of the Conference.—On motion of T. A. O'Farrell, the bar of the Conference was fixed.

Adjournment.—On motion of H. I. James, the Conference voted to adjourn. After the announcements, Miss Oril Penney and Jackson Rugayo led in prayer and T. A. O'Farrell pronounced the Benediction. The Conference stood adjourned at 11.50 a. m.

Second Day,—Thursday, October 6th, 1938

Opening.—The Conference was called to order by the Bishop at 8.30 a. m.

Devotions.—Hymn No. 337 "Prince of Peace, Control my will," was sung and M. J. Murphree led in prayer. The Bishop spoke on the subject of "Our vision and others". The Ministers' Quartette sang, "Lord, I want to be a Christian."

Minutes.—The minutes of the session of Wednesday were read and approved.

Reports.—H. I. James read the report for the Mrewa District. W. Bourgaize read the report for the Mtoko District. E. L. Sells read the report for the Mutambara District.

Recess.—The Conference went into recess at 10. o'clock.

Reconvened.—The Conference reconvened at 10.25 o'clock with the singing of Hymn No. 348 "Take my life and let it be". Patrick Machiri led in prayer.

Reports.—M. J. Murphree read the report for the Old Umtali District. E. L. Sells read the report for the Umtali District.

Umbowo.—The Bishop spoke on the great need of getting the Umbowo published again. It was reported that six hundred subscriptions were needed and that only three hundred and forty had been secured. It was urged that the Conference try to secure the needed subscriptions as soon as possible.

Greetings.—On motion of T. A. O'Farrell, it was ordered that greetings be sent to Jonah Chitombo who is sick and unable to attend the Conference.

Question One.—"Who are the members of the Lay Conference present and who are its officers?"

For members see Lay Conference report.

Officers— Chairman, Lewis Tsododo.

Secretary, Solomon Machingura.

The report was read and Item 1 was referred to the Board of Education.

Item 2 was referred to the Board of Stewards.

Item 3 was referred to the Board of Education.

Closing.—After the announcements, Titus Maranke pronounced the Benediction and the Conference stood adjourned at 12.05 p. m.

Third Day,—Friday, October 7th, 1938

Opening.—The Conference was called to order by the Bishop at 8.30 a. m.

Hymn No. 193 "Holy Spirit, faithful Guide" was sung and the 121st Psalm was repeated in concert. Miss Ona Parmenter led in prayer. The Quartette sang, "Ashamed of Jesus." The Bishop read the Scripture Lesson from Mark 14: 33-36 and spoke on "Prayer."

Minutes.—The minutes of the session of Thursday were read and approved.

Question four.—"What are the Statistical and Financial Reports for the year?"

H. I. James read the Treasurer's report

H. E. Taylor read the Statistician's report

Recess.—The Conference went into recess at 10.10 o'clock.

Reconvened.—The Conference reconvened at 10.35 o'clock with the singing of Hymn No. 540, "O could I speak the matchless worth" E. L. Sells led in prayer.

Question Five.—a. None. b. Two Shillings and sixpence for each Church for General Conference Expense.

Question six.—See District Superintendents' Reports.

Question Nine.—There are no claims on the Conference Funds.

Question Ten.—"What has been received on these claims?"

a. From Pastoral Charges

£6 - 9 - 6½

b. How has it been applied?

Placed on deposit and invested in Government Loan Certificates.

Question Eleven.—"What amounts have been apportioned within pastoral charges to be raised for the support of Conference Claimants?"

On motion, the Conference voted that the amount should be two and one-half percent of the Pastors salary.

Questions Fourteen and Five.—Were asked and answered in the negative.

Auditing Committee.—M. J. Murphree resigned from the Auditing Committee and nominated John Nduna, Eserivao Anglazi and Lewis Tsododo as additional members. These were elected.

Question Sixteen.—See reports of the District Superintendents and the Board of Sunday Schools.

Question Nineteen.—"Where shall the next session of the Conference be held." M. J. Murphree presented the invitation for Old Umtali. On motion, the invitation was accepted.

Report.—T. A. O'Farrell read the report for the Nyadiri District.

Extension of time.—The time was extended.

Closing.—After the announcements, the Benediction was pronounced by Amos Kapenzi. The Conference stood adjourned at 12.05 p. m.

Fourth Day,—Saturday, October 8th, 1938

Opening.—The Conference was called to order at 8.30 a. m.

Devotions.—M. E. Persons led the devotions. Hymn No. 2 "Come, thou Almighty King." was sung and W. Bourgaize led in prayer. The Missionary Ladies Trio sang, "Leaning on the Everlasting Arms" Mr. Persons spoke. J. Chimbadzwa led in prayer and Hymn No. 376 "O for a heart of calm repose." was sung.

Minutes.—The minutes of the session of Friday were read and approved.

Central Conference.—The Bishop spoke of the necessity of an amendment so as to provide for the election of two African delegates and discussed the expenses of delegates attending.

Question twenty four.—"Who have been received on Trial?"
a. In the Studies of the first year.

The name of Philip Beecher Christian was presented as recommended by the St. Andrew's Quarterly Conference. The Board of Ministerial Training reported that he was a graduate of Leonard Theological Seminary in India and that he had taken the required examination on the Discipline. The Conference Relations Committee recommended that he be received. On motion of E. L. Sells, he was received on trial, placed in the studies of the First Year and elected to Deacons and Elders Orders under the Missionary rule.

Question twenty five.—"Who have been continued on trial?"
b. In the studies of the Second Year.

The name of M. E. Persons was called, his character passed. The Board of Ministerial Training reported that he had completed all but one of the Studies of the First Year. On motion of M. J. Murphree, he was advanced to Studies of the Second Year, conditioned on the one subject.

Questions Numbers.—26, 27, 28, 29, 31, 32, 33, 36, 37, 39, 40, 41, and 43 were called and answered in the negative.

Question Thirty.—"What members have completed the Conference Course of Study" The name of Luke Chieza was called. The Board of Ministerial Training reported that he had completed the Conference Course of Study. On motion of H. I. James, he was graduated from the Course of Study and elected to Elders orders.

Question thirty-eight.—"Who have died?" E. H. Greeley has died during the year.

Board of Education.—The report was read by C. E. Faku. It was taken up seriatim and adopted both in part and as a whole.

Recess.—The Conference went into recess at 10.20 o'clock.

Reconvened.—The Conference reconvened at 10.40 o'clock with the singing of Hymn No. 543 "Dear Lord and Father of Mankind" Miss Jessie Pfaff led in prayer.

The Board of Sunday Schools.—Miss Sarah King read the report. On motion it was adopted.

Board of Home Missions and Church Extensions.—Lewis Tsododo read the report, which presented the proposed constitution for a Missionary Society. After being ammended the report was adopted

African Missionary Society of the Methodist Episcopal Church in Rhodesia.—On motion of H. I. James, the Missionary Society was substituted for the Board of Home Missions and Church Extension. On motion of M. J. Murphree, the Conference approved of the officers elected.

Chairman. J. M. Chimbadzwa
 Secretary. John Nduna
 Treasurer. Amos Kapenzi

Closing.—After the announcements, W. Bourgaize pronounced the Benediction and the Conference stood adjourned at 12.0 noon.

Fifth Day,—Sunday, October 10th, 1938.

Service of Worship—The Service of worship was held in the Assembly Hall at 9.0 a.m. with Bishop John M. Springer preaching.

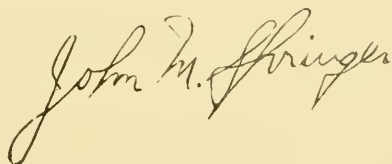
Ordination—Service—After the Sermon, the Bishop ordained Philip Beecher Christian as a Deacon. Assisted by several Elders he ordained as Elders, Philip Beecher Christian and Luke Chieza.

CERTIFICATE OF ORDINATION

This certifies that on the ninth day of October in the year of our Lord one thousand nine hundred and thirty-eight in the Methodist Episcopal Church at Old Umtali, Southern Rhodesia, I ordained Deacon: Philipbai Becherdas Christian

And that, on the same day and in the same place, assisted by a number of Elders, I ordained Elders: Philipbai Becherdas Christian and Luke Chieza.

(Signed)



Bishop

Old Umtali, S. Rhodesia
October, 9, 1938

Memorial Service—At 2.30 p. m. in the Assembly Hall a Memorial Service was held for the late Miss Mildred O. Benson, a Missionary of the Conference and for the late Rev. E. H. Greeley D. D., a member and missionary of the Conference.

Sixth Day, —Monday, October 10th, 1938

Opening—The Conference was called to order by the Bishop at 8. 30 a. m.

Devotions—Hymn No. 461, "How firm a foundation" was sung. C. Faku led in prayer. The quartette sang "Mwari Nditumenyi" R. C. Gates spoke on the subject, "The will of the Lord be done."

Minutes—The minutes of the sessions of Saturday and Sunday were read and approved.

The Central Conference—On motion of H. I. James, the following amendment or procedure for the Central Conference was adopted:

“For the next session of the Africa Central Mission Conference each of the constituent Conferences may elect four delegates, two of whom may be Africans, either ministerial or lay.”

Special Appointment—On motion of H. E. Taylor, the Conference approved of the special appointment of L. E. Adkins as a “Missionary in East Africa.”

Board of Stewards—Titus Maranke read the report which was adopted. See report.

Hospitals and Medical Work—Miss Ona Parmenter read the report which was approved, except as noted. On motion of T. A. O’Farrell, Item 3 was referred to the Committee on Accepted Supply Pastors.

Committee on the State of the Church—Patrick Machiri read the report, which included the proposed constitution for the Rukwadzano rwe Wadzimayi. On motion the report was adopted.

On Motion of T. A. O’Farrell, it was ordered that the Secretary send a copy of Item No. 5 to the Secretary of Native Affairs.

Day of Prayer—On motion of E. L. Sells, it was ordered that the Conference observe the International Fellowship day on February 7th, 1939 in keeping with the fellowship around world.

Recess—The Conference went into recess at 10.05 o’clock.

Reconvened—The Conference reconvened at 10.35 o’clock with the singing of Hymn No. 383 “Onward Christian Soldiers.” Bishop Springer led in prayer.

Board of Ministerial Training—T. A. O’Farrell read a supplementary report. On motion the report was adopted.

Board of Sunday Schools—Miss Mullikin spoke on the work of the Sunday Schools within the Conference. A supplementary report was read and on motion it was adopted.

Native Christian Convention—Amos Kapenzi read the report. On motion of M. J. Murphree the report was received. On motion of H. I. James, the Officers nominated were elected for next year. As a Missionary Advisor, Miss Sarah King was continued.

Question Thirty-five—"Who are the Accepted Supply Pastors?"

C. Faku read the report of the Committee on Accepted Supply Pastors. The characters of the pastors were passed and on motion of H. I. James the list was accepted.

See list.

Question Thirty-Six—was asked. The First Year Course of study for Local Preachers has been drawn up and approved by the Conference for next year.

Delegates to the Uniting Conference—The Bishop called for the election of Ministerial Delegates to the Uniting Conference. P. Machiri, O. Chimonyo and J. Nduna were appointed as tellers. The vote was taken.

Conference Statistician—On nomination of T. A. O'Farrell, R. C. Gates was elected.

Conference Treasurer—On nomination of H. E. Taylor, H. I. James was elected.

Journal—On motion of H. E. Taylor, the printed record of the minutes was made the official record of the Conference and the Secretary was elected to edit and publish the Journal.

Greetings—On motion of M. J. Murphree, it was ordered that Greetings be sent to the Board of Home and Foreign Missions of India and Burma with our appreciation for sending to us the first missionaries from India to Africa. On motion of R. C. Gates, it was ordered that greetings be sent to Bishop and Mrs. E. S. Johnson.

Report of the Election—The Tellers reported the following results of the ballot taken for the Delegates. 33 were cast. 9 were defective. There were 24 counted. H. E. Taylor received 20; W. Bourgaize received 16 and G. A. Roberts received 12. The Bishop declared H. E. Taylor elected as the Delegate and W. Bourgaize as the Reserve Delegate.

Adjournment—On motion of M. J. Murphree, the Conference voted to adjourn to meet at 2.30 p. m.

Closing—H. E. Taylor pronounced the Benediction. The Conference stood adjourned at 12.0 noon.

Afternoon Session

Opening.—The Conference was called to order by the Bishop at 2.30 p. m. with the singing of Hymn No. 407 "Be strong" Miss Lulu Tubbs led in prayer.

Report from the Lay Conference.—The Chairman of the Lay Conference read the report of the election of the Lay Delegate to the Uniting Conference. Mrs. H. E. Taylor was elected Delegate and Miss Scovill was elected the Reserve Delegate.

Boards, Commissions and Committees: Cabinet Nominations. H. I. James reporting for the District Superintendents, nominated the following Boards, Commissions, Committees and on his motion they were elected: Board of Education, Board of Stewards (expired term), Board of Sunday Schools, Committee on Conference Relations, Committee on Accepted Supply Pastors, Committee on Hospitals and Medical Work, Committee on Interdenominational Relations, Committee on the State of the Church, Committee on Publications, Committee on Resolutions, Committee on Memoirs, Historical Committee, Auditing Committee, Commission on Worship and Music. (See Section II page 180 of the Journal). Nominations were made for the Missionary Advisory Members of:

Native Christian Convention
R. C. Gates

Rukwadzano rwe Wadzimayi
Mrs. H. I. James
Mrs. T. A. O'Farrell
Mrs. E. Sells
Mrs. M. J. Murphree

The above were elected.

H. I. James presented the nominations for the Secretaries of the Rukwadzano rwe Wadzimayi.

Southern Section:
Mrs. O. Chimonyo
Assist. Mrs. Titus Maranke

Northern Section
Mrs. M. Mparutsa
Assist. Mrs. E. Munjoma

Question Nos.—18 and 3 were asked and answered in the negative.

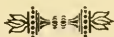
Question Forty-four.—"Who are the Triers of Appeals"? On nomination of H. I. James, the Triers of Appeals were elected. See list.

Union School for Higher Education.—On motion of T. A. O'Farrell, the Conference voted to unite with co-operating Missions in Southern Rhodesia for establishing a union school for higher education and to give all possible financial support.

Final Adjournment.—On motion of H. I. James, the Conference voted to adjourn (sine die) after the approval of the Minutes and the reading of the appointments. The minutes were read and approved.

The Missionary Quartette sang, "Take Time to be Holy."

The Bishop read the appointments. After singing the Doxology, the Bishop pronounced the Benediction. The Conference stood adjourned, sine die, at 3.30 p. m.



Certificate of the President and Secretary

This is to certify that the foregoing is a complete and correct report of the proceedings of the sixth session of the United session of the Rhodesia Annual Conference and the Rhodesia Lay Conference and the Eighth session of the Rhodesia Annual Conference of the Methodist Episcopal Church, held in Old Umtali Church, Southern Rhodesia, October 5th to 10th, 1938, and as such has been adopted by the said Annual Conference as its official record.

John M. Springer

PRESIDENT

E. L. Sells

SECRETARY

Part IV.

DISCIPLINARY QUESTIONS

The Rhodesia Conference held at Old Umtali, October 5th to 10th, 1938.

A. UNITED SESSION

1. **Who are the members of the Lay Conference present, and who are its officers ?**
(See Secretary's record for names of members.)
President : Lewis Tsododo, P. O. Mutambara
Secretary: Solomon Machingura, P.O. Box 333, Salisbury
2. **Is the Annual Conference incorporated According to the Requirement of the Discipline ?**
No.
3. **What Officers and Persons holding Moneys, Funds etc., are Bonded, and in what Amounts, According to the Requirement of the Discipline ?**
None.
4. **What are the Statistical and Financial Reports for the year ?**
(a) From the Statistician. See Statistical Report.
(b) From the Treasurer. See Treasurer's Report.
5. (a) **What are the Items and Aggregate of General Conference Benevolences apportioned to this Conference ?**
None.

(b) **What amounts are fixed by this body as the minimum goals for General Conference Benevolences for the ensuing year ?**
Two Shillings and six pence from each Church for General Conference Expense.
6. **What Reports and Exhibits are presented by Conference Boards and Institutions ?**
See District Superintendents' Reports.
7. **What is the Annual Report of the Conference Board of Home Missions and Church Extension ?**
See Report.

8. **What is the Annual Report of the Conference Board of Foreign Missions ?**
No report.
9. **What are the Claims on the Conference Funds ?**
None
10. (a) **What has been received on these Claims ?**
From Pastoral Charges £ 6-9-6½
- (b) **How has it been Applied ?**
Placed on deposit and invested in Government Loan Certificates.
11. **What amount has been apportioned to the Pastoral Charges within the Conference, to be raised for the Support of Conference Claimants ?**
Two and one half percent of Pastor's salary.
12. **What are the Items and Aggregate of Annual Conference Benevolences approved by this body for the ensuing year?**
None.
13. **What approved financial campaigns are to be carried on in this Conference during the ensuing year, and for what amounts?**
None.
14. **What is the schedule of Minimum Support ?**
None.
15. **What are the approved claims for the support of District Superintendents, Bishops, and Conference Claimants for the ensuing year ?**
None.
16. **What shall be the Evangelistic and Religious Educational Plan for the ensuing year ?**
See reports of District Superintendents and Board of Sunday Schools.
17. **What Standing Committees shall be appointed by this body ?**
See Committees.

18. **What other items of business shall be considered by this United Session ?**
None.
19. **Where shall the Next Session of the Conference be held ?**
Old Umtali.

B. ANNUAL CONFERENCE

20. **Who have had their Credentials Restored without readmission to the Conference ?**
None.
21. **Who have been Received by Transfer, and from what Conference ?**
None.
22. **Who have been Readmitted ?**
None
23. **Who have been Received on Credentials, and from what Churches ?**
None.
24. **Who have been Received on Trial ?**
(a) In Studies of First Year.
P. B. Christian
(b) In Studies of Third Year under the Seminary Rule.
None.
(c) Exempt from Course of Study under Seminary Rule.
None.
25. **Who have been Continued on Trial ?**
(a) In Studies of First Year.
(b) In Studies of Second Year.
M. E. Persons
(c) In Studies of Third Year.
None.
(d) In Studies of Fourth Year.
None.
26. **Who have been Discontinued ?**
None.

27. Who have been admitted into Full Membership ?

- (a) Elected and Ordained Deacons this year.
None.
- (b) Elected and Ordained Deacons previously.
None.
- (c) Elected to be Ordained elsewhere.
None.
- (d) Ordained Deacon, having been previously elected
by.....Conference.
None

28. What Members are in Studies of Third Year ?

- (a) Admitted into full Membership this year.
None.
- (b) Admitted into Full Membership previously.
None.

29. What Members are in Studies of Fourth Year ?

None.

30. What Members have Completed the Conference Course of Study?

- (a) Elected and Ordained Elders this year.
Luke Chieza.
- (b) Elected and Ordained Elders previously.
None.
- (c) Elected and Ordained Elders under Seminary Rule.
None.
- (d) Elected to be Ordained elsewhere.
None.
- (e) Ordained Elder, having been previously Elected by
Conference.
None.
- (f) Ordained Elder elsewhere under our Election.
None.

31. What others have been Elected and Ordained Deacons ?

- (a) As Local Preachers.
None.
- (b) Under Seminary Rule.
None.
- (c) Under Missionary Rule.
P. B. Christian
- (d) Elected by this Conference and Ordained elsewhere.
None.

- 32. What others have been Elected and Ordained Elders?**
- (a) As Local Deacons.
None.
- (b) Under Missionary Rule.
P. B. Christian
- (c) Elected by the Conference and Ordained elsewhere?
None.
- 33. Who have been left without Appointment to Attend One of our Schools?**
None.
- 34. Was the Character of each Preacher examined?**
Yes. The name of every preacher was called in open Conference.
- 35. Who are accepted as Supply Pastors?**
See list.
- 36. (a) What Accepted Supply Pastors now in charge are taking**
- I. The Conference Course of Study?**
1. In the First year.
None.
2. In Second Year.
None.
3. In Third Year.
None.
4. In the Fourth Year.
None.
- II. The Local Preachers' Course of Study?**
1. In the First Year.
None.
2. In the Second Year.
None.
3. In the Third Year.
None.
- (b) Was the character of each Accepted Supply Pastor now in charge examined?**
Yes.
- (c) 1. Are the District Committees on Qualifications of Local Preachers nominated by the District Superintendents approved?**
No Committees.

(c) 11 What Local Preachers have completed satisfactorily the studies prescribed ?

1. For Deacon's Orders.

None.

2. For Elder's Orders.

None.

37. Who have been Transferred, and to what Conferences ?

None.

38. Who have died ?

E. H. Greeley.

39. Who have had their Conference Membership terminated ?

(a) By Voluntary Location

None.

(d) By Involuntary Location

None.

(c) By Surrender of the Ministerial Office and Credentials.

None.

(b) By Judicial Procedure.

None.

(e) By withdrawal.

1. To Join the Ministry of another Church.

None.

2. From the Ministry.

None.

3. From the Ministry and Membership of the Church.

None.

4. Under Complaints or Charges.

None.

40. What other personal Notations should be made ?

None.

41. Who are the Supernumerary Ministers, and for what number of years consecutively has each held this Relation ?

None.

42. Who are the Retired Ministers ?

None.

43. **Who have been granted Leave of absence ?**
None.
44. **Who are the Triers of Appeals ?**
H. I. James
Benjamin Katsidzira,
Thomas Marange,
John Nduna,
M. J. Murphree,
(Reserves)
C. Faku,
G. A. Roberts.
45. **What institutions and organizations are approved by three-quarters vote of the Conference for appointment of Ministers in the Effective Relation with Annuity Claim ?**
None.
46. **Where are the Preachers Stationed ?**
See List of Appointments.

PART V.

LIST OF CONFERENCE APPOINTMENTS

(The numbers after the names of members and missionaries indicate the consecutive years of the appointment.)

Representative Superintendent-M. J. Murphree

MREWA DISTRICT

H. I. James, Superintendent 3

Mrewa

| | |
|------------------------|----------------------|
| Mrewa Mission | H. I. James 3 |
| Howard Memorial Church | H. I. James 3 |
| Associate Pastor | Luke Chieza 1 |
| Mission School | H. I. James 3 |
| | Fannie Ellener 1 |
| | Kenneth Choto |
| | Obadaiah Musingwini |
| | (Annah Kaulos) |
| | (Eunice Munjoma) |
| | (Stella May Sondai) |
| | (Felton Phombeya) |
| | (Titus Kuture) |
| | (Rhoda Darikwa) |
| Women's Work | Mrs. H. I. James 3 |

Mrewa Circuit

Isaiah Munjoma 2

| | |
|-------------|-----------------------|
| Chaanetsa | <i>To be supplied</i> |
| Chingono | <i>To be supplied</i> |
| Choruwa | Joseph Makuto |
| Chamosweswe | <i>To be supplied</i> |
| Dandara | Isaiah Tsopotsa |
| Duku | <i>To be supplied</i> |
| Gomba | (Taylor Gotora) |
| Gatsi | <i>To be Supplied</i> |
| Hokodzi | Abishai Tuhwe |
| Hunda | <i>To be supplied</i> |
| Jacobs | Eddy Kambarami |
| Kambarami | <i>To be supplied</i> |
| Muchinjike | Rodrick Kunyarimwe |
| Munetsi | <i>To be supplied</i> |
| Nyamutumbu | Isaac Kambarami |
| Nyamashoto | <i>To be supplied</i> |
| Rupange | Mathias Kurisa |
| Sadza | <i>To be supplied</i> |
| Zingeneni | <i>To be supplied</i> |

Mangwendi Circuit

Chiguri
Chinhenga
Gumbanjera
Mrewa Kraal
Maponongwe
Mutizi
Nyagwizo
Newton

David Mandisodza 2

Silas Chitiyo
Henry Chitiyo
Peter Kananuhwa
To be supplied
Philip Mauchaza
Philip Kananuhwa
To be supplied
To be supplied

Headlands Circuit

Arnoldene
Chigudu
Fusiri
Magura
Manuhwa
Mufunde
Mukombwe
Mutibura
Muvundudzi

Hosea Katsidzira 5

Moses Chisamba
To be supplied
James Mujeni
To be supplied
To be supplied
Daniel Makuto
To be supplied
William Chieza
William Mudede

Chikore Reserve

Chikore
Dawara
Nyagambwe

Hosea Katsidzira 5

To be supplied
To be supplied
To be supplied

Salisbury**Bulawayo****District Evangelist****Isaiah Darikwa 2***To be supplied***Luke Chieza 2****MTOKO DISTRICT****W. Bourgaize, Superintendent 7**

Mtoko

South Circuit

Mtoko Mission
Pastor
Assistant Pastor
Principal of school
Assistants

W. Bourgaize 7**W. Bourgaize 7****Samuel Chieza 7**

Shadrack Nyemba
Timothy Mahachi
Sydney Chidzwondo
(Ruth Muredzwa)

Chitekwe

Paul Muranda
(Alice Gondora)

Gurure
Kagande
Muswairi

Michael Karonga
Elisha Mvududu
Elijah Karoma
(Ruth Makeba)

Makokoro
 Nyamakopi
 Nyakabao
 Tsigá
 Chifodya
 Kawere
 Madzande
 Nyakuchena
 Mudzonga
 Nyamakosi

Jacob Nyamuda
 Isaiah Chingwena
 Isaac Musiwa
To be supplied
 Amos Muswairo
To be supplied
 Enoch Chingwena
To be supplied
 Silas Musakwa
To be supplied

North Circuit

Katsande
 Kowo
 Makosa
 Masenda
 Nyamkoho

Enock Munjoma 6
 Samuel Tsomondo
Enock Munjoma 1
 Peter Mufundi
 Shadrack Karimanzira
 Elijah Tsigá

MUTAMBARA DISTRICT

E. L. Sells, Superintendent 1
 P. O. Box 55,
 Umtali

Mutambara Mission

Pastor
 Assistant
 Co-educational School
 Principal

Lulu Tubbs 1
 Lulu Tubbs 1
Jackson Rugayo 6

Assistants

Fannie Ellener, (until Dec.)
 Jessie A. Pfaff, (after
 January 1st)
 (Amos Kapswara)
 (Period Dube)
 (Lewis Tsododo)
 (Jacob Mutisi)
 (Willie Kanogoiwa)
 (Ernest Sisimayi)
 (Agnes Muradzikwa)
 (Dinah Danda)
 (Sophie Matango)
 (Lydia Mutango)
 (Siri Munjoma)
 (Hazel Manyange)
 (Irene Hlatywayo)
 (Sarah Sitole)

Boys' Boarding Dept.,
 Industrial and Agri-
 culture

P. F. de Bruijn 1

| | |
|----------------------------|-------------------------|
| Women's work | (Mrs. Jackson Rugayo) |
| Medical work | Oril Penney 6 |
| Assistant | Lazarus Chikonzo |
| W. F. M. S. (Directress) | Lulu Tubbs 7 |
| | Oril Penney 6 |
| | Mrs. Irene Wratten 1 |
| Mutambara Circuit | Jackson Rugayo 6 |
| Chakowa | Henry Mubango |
| Chiamiti | Aaron Muponda |
| Chiramba | Hezekiah Kaserera |
| Chitora | Noel Mudaba |
| | (Aaron Kuture) |
| Dunhu | Thomas Kamusono |
| | (Edward Mukukunga) |
| Nenohwa | Josiah Munotumani |
| Nyambeya | Jotham Chatema |
| Rupisi | <i>To be supplied</i> |
| Shinja | Edward Liya |
| Zambasira | Edison Mutasa |
| Munyora | Wilson Mudzimwa |
| Mutambara Reserve | |
| School | (Nathan Ndidzano) |
| | (Monica Mutambara) |
| | (Cecilia Tsododo) |
| Mutsiabako | <i>To be supplied</i> |

NYADIRI DISTRICT

T. A. O'Farrell, Superintendent 5

Nyadiri mission, P. B. 136 E Salisbury,

| | |
|------------------------|--------------------------|
| Nyadiri Mission | T. A. O'Farrell 5 |
| Nyadiri Church | T. A. O'Farrell 5 |
| Associate Pastor | Moses Muparutsa 8 |
| Co-educational School | |
| Principal | Buelah Reitz 1 |
| Assistants | Edith Parks 1 |
| | Eddy Makombore |
| | Ebson Zimonde |
| | Gideon Darikwa |
| | Samual Munjoma |
| | Hector Kambombe |
| | Edward Makoni |
| | Timothy Kambarami |
| | Josiah Mbutsa |
| | (Emily Chinonzuro) |
| | (Nancy Sachiti) |
| | (Emma Rakabopa) |

| | |
|---|--------------------------|
| | (Agnes Munjoma) |
| Jeanes Teacher | (Jonathan Maranke) |
| Community and Women's Work | |
| Assistant | Mrs. T. A. O'Farrell 5 |
| Medical Work, (Washburn Memorial Hospital) | (Mrs. Moses Muparutsa) |
| Resident Physician | <i>To be Supplied</i> |
| Nurse | Alice E. Whitney 2 |
| Assistants | (Della Mutambara) |
| | (Esther Tsododo) |
| | (Emily Zisengwe) |
| | (Alice Manyarara) |
| | (Phineas Moswi) |
| W.F.M.S. (Directress) | Sarah King 2 |
| | Buelah Reitz 1 |
| | Alice E. Whitney 2 |
| | Edith Parks 1 |
| Nyadiri Circuit | Jonah Chitombo 4 |
| Chidodo | <i>To be Supplied</i> |
| Kamucheka | Stephen Zambuko |
| Kangara | <i>To be Supplied</i> |
| Kasambarare | Jeckson Chinake |
| Magaya | <i>To be Supplied</i> |
| Manyika | Jonah Chitombo 4 |
| | Philemon Gosha |
| | (Amelia Muswe) |
| Mugabe | Timothy Chirimumimba |
| Mupaya | George Kambarami |
| Musani | Nason Chigubo |
| Nyamhara | <i>To be Supplied</i> |
| Sori | Lazarus Samukange |
| Uzumba Circuit | Moses Muparutsa 4 |
| Chifunde | <i>To be Supplied</i> |
| Chikuhwe | Titus Katiyo |
| Chitimbe | Paul Mutizi |
| Chivinge | <i>To be Supplied</i> |
| Gadaga | <i>To be Supplied</i> |
| Katiyo | <i>To be Supplied</i> |
| Machekera | <i>To be Supplied</i> |
| Kaseke | <i>To be Supplied</i> |
| Gотора | <i>To be Supplied</i> |
| Mashambanhaka | Joseph Chipuriro |
| Zanga | Josiah Mrewa |
| Zaranyika | James Dzapasi |
| Maramba-Fungwi-Darwin Circuit, | Jonah Chitombo 2 |

Maramba
Sapuranambuya
Chinungu
Chidagwa
Dindi
Umtata

Wilson Mmanga
Amon Kajese
To be Supplied
Noah Muswe
Gladman Jangano
To be Supplied

OLD UMTALI DISTRICT

M. J. Murphree, Superintendent 4

Old Umtali

Gandanzara Circuit

Gandanzara

Mapara
Ndingi
Tswikiro
Zuzi

Silas Kasambira 4
Silas Kasambira 4
(Elias Ngonyama)
(Norah Zwingowaniseyi)
To be supplied
Philip Sitole
Vincent Hamadziripi
(Elina Matylunga)

Mukahanana Circuit

Mukahanana

Chikuruwo
Game Valley
Jenya

Jonah Machiri 1
Jonah Machiri 1
(Ruth Cikusi)
Editor Makefunye
Aaron Sitole
(Renah Munjoma)

Odzi Circuit

Chikunda
Chiremba
Odzi

Philip Chieza 6
To be supplied
Thomas Matara
Philip Chieza 6

Old Umtali Circuit

Mandiambira
Manyarara
Marara
Mundenda

Obadiah Chimonyo 3
Samuel Matongo
Peter Sitole
Isaac Zisengwe
Obadiah Chimonyo 3
(Maud Maucaza)

Penhalonga

Mtasa Circuit

Nhunama

Nyakatsapa

Nyamukwarara
Rupinda

Johnson Maramba 4
Patrick Machiri 4
Elias Jangano
(Nessie Nyatanga)
Patrick Machiri 4
Amos Karumbidza
(Helen Chimbadzwa)
(Leah Mahlunge)
Samuel Manjoro
Knife Catakarwirana

| | |
|-------------------------------------|--|
| Sherukuru | <i>To be supplied</i> |
| Vumbunu | <i>To be supplied</i> |
| Wengo | <i>To be supplied</i> |
| Zinyembi | <i>To be supplied</i> |
| Samanga | <i>To be supplied</i> |
| Chiduku Circuit | Zechariah Mukombiwa 5 |
| Chiduku | <i>To be supplied</i> |
| Chinyadza | Moses Gwizo |
| Chikanda | <i>To be supplied</i> |
| Kufa (Chitenderano) | Ellimon Marazi |
| Gurure | Alec Murahwa (Elia Mutepha) |
| Manyora | Fibian Kasimuru |
| Muziti | Isaiah Musamba (Adina Nyarota) |
| Rukweza | Zechariah Mukombiwa 5 (Mary Chiwanga) |
| Sharara | Leonard Kasambira (Eni Kapfumvuti) (Mary Matanga) |
| Old Umtali Mission | M. J. Murphree 4 |
| Old Umtali Church | Josiah Chimbadzwa 3 |
| Theological School | M. J. Murphree 4 |
| Teacher Training School | Mrs. M. P. Taylor (Until January 1st) 6 |
| Assistant | R. C. Gates (After Jan. 1st) 1 Jessie Pfaff (Until Jan. 1st) 3 Lois Pfaff (After Jan. 1st) 3 |
| Primary School | Mrs. M. P. Taylor (Until Jan. 1st) 2 |
| Assistants | R. C. Gates (After Jan. 1st) 1 C. Faku 5 (Nancy Ngonyama) |
| Central Primary School | C. W. Huie 1 |
| Assistants | Mrs. C. W. Huie 3 Miss J. Loze 3 R. Ngonyama 5 A. Kapenzi 10 (David Mukombiwa) (Nedson Sitole) (Elia Chidzikwe) (Edith Musariyarwa) |
| Music | Mrs. M. J. Murphree 3 |
| Assistant | A. Kapenzi 10 |
| Agriculture and Animal Husbandry | H. E. Taylor (Until |

| | |
|---------------------------|-------------------------------|
| | January 1st.) 6 |
| | G. P. Braithwaite (After |
| Assistants | January 1st.) 1 |
| | (Ashford Bepete) |
| | (Jeffries Nyakunu) |
| Carpentry and Building | W. Hamrick 1 |
| Assistants | (E. Sukhuma) |
| | (N. Tsododo) |
| Medical Work and | |
| Maternity Training | Ruth E. Hansson 6 |
| | Rosa Rydell 1 |
| | (Eni Muchimwe) |
| | (Lois Mandiambira) |
| Women's Work | Mrs. R. C. Gates 1 |
| Assistant | <i>To be supplied</i> |
| Fairfield Girls' School | F. Quinton 2 |
| | Lois Pfaff 3 |
| | Irene Gugin 1 |
| | J. Loze (Until Jan. 1st.) 3 |
| | (Nancy Ngonyama) |
| | (Harriet Mandikutsi) |
| | (Marigold Munjoma) |
| | (Anna Moore) |
| | (Priscilla Mukwedayo) |
| | (Timothy Chieza) |
| | (Janje Rusero) |
| O. U. District Secretary | F. Lois Jessop 2 |
| O. U. District Evangelist | R. C. Gates 1 |
| Assistant Superintendents | John Nduna 2 |
| of Schools | Paul Malianga |
| Jeanes Teacher | (Aaron Machiri) |
| Jeanes Woman | (Elsie Ngonyama) |

UMTALI DISTRICT

E. L. Sells, Superintendent 2

P. O. Box 55,

Umtali

Marange Circuit
Chirinda

Benjamin Katsidzira 4
Towndie Mhalanga

| | |
|--------------------------------------|--|
| Chipfatsura | Joshua Mutsago (Sarah Mutsago) |
| Mafararikwa | Samuel Chikwaiti |
| Makomwe | Benjamin Katsidzira 4 Isaiah Kuwana (Edith Masiya) |
| Masasi | Benson Kapvumvuti |
| Matanda | Abisha Ndidzano |
| Musiringofa | Lionel Zimunya |
| Mutsago | Samuel Gwarade |
| Nyika | Kenneth Murigwa |
| Shundure | Martin Nyagura (Martha Nyagura) |
| Untali Circuit | |
| St. Andrew's Church | E. L. Sells 2 |
| St. Thomas Church | <i>P. B. Christian</i> 1 |
| Miller Memorial Church | Titus Marange 5 |
| School | Gladman Faku (Joyce Nyangombe) (Elizabeth Maviza) (Tamari Mauchaza) |
| Native Girls' Hostel | Ona M. Parmenter 3 |
| District Rukwadzano rwe Wadzimayi | Mrs. E. L. Sells 2 |
| Zimunya Circuit | |
| Bvumba | Thomas Marange 12 |
| Chitakatira | Johnson Sachiti Job Gondora (Richard Mangwiro) (Lillian Nerutombwe) |
| Dangari | Shadrach Chitereka (Maretawona Chairuka) |
| Gwese | Paul Maviza |
| Mukozhiwa | Morrison Parwehosi |
| Munyarari | Gibson Makaure |
| Muradzikwa | Thomas Marange 12 Mark Matanga (Mathew Tamburike) (Eunice Matanga) |
| Murare | Daniel Chitenderu (Justin Marwire) (Agnes Chitenderu) |
| Rowa | Lionel Mupenswa |
| Jeanes Teacher | (Samson Zwinoira) . |

SPECIAL APPOINTMENTS.

| | |
|--|--|
| Rhodesia Mission Press Editor of Umbowo | M. J. Murphree 1 Frances Quinton 2 |
| Assistant | Josiah Chimbadzwa 3 |
| Editor Sunday School Literature | Pearl Mullikin 7 |
| Sunday School Evangelist Assistant | Pearl Mullikin 2 To be supplied |
| Mission Correspondent | R. C. Gates 1 |
| Concession Registrar | The Mission Treasurer |
| Associate Editor Missionary Advocate | E. L. Sells 3 |
| Area Office | <i>M. E. Persons</i> , Member of O. U. Qtr. Conf. 2 |
| Missionary Evangelist in E. Africa | L. E. Adkins - Member of O. U. Qtr. Conf. 1 |
| On Furlough — | G. A. Roberts Mrs. G. A. Roberts Miss Ila Scovill Miss Grace Clark |

NOTE

Heavy Type—Members of Conference.

Italics—Members on Trial.

Roman—Missionaries and Accepted Supply Pastors.

()—Teachers and other workers.

Part VI

(a) Reports of District Superintendents

REPORT OF MREWA DISTRICT

H. I. James, *Superintendent*

Bishop and Fellow-workers:

The Mrewa District comprises the Mrewa Mission, the Co-operative work with the British Methodists in Salisbury and three circuits of twenty, twelve and eight stations respectively. This makes in all forty-two stations in which Christian work is being carried on regularly. In this annual report of the District it must be with a glance of the past that we report on the present in the light of the future.

Throughout the year we have continued conscious of the magnitude of the task confronting our staff of workers not only in building up and deepening the spiritual life of our own people and the winning of many who are merely adherents to a positive acceptance of Christ, but also that of consolidating the work so that there shall be no islands of untouched people within the District. This district, very fortunately, is not much broken into by the overlapping of other Societies or Churches. In this task I hasten to acknowledge the loyal help and co-operation of the five African Ministers and 72 Local Preachers which number includes our 23 Pastor-teachers. We do not forget the Class-leaders, Stewards and Sunday School workers in the group of workers whose loyalty I now acknowledge with gratitude.

Mrewa Mission

The work at the center is complex as it is at all centers. The fact that we have no trained medical missionary does not mean that we have no medical work to be done just as it does not mean we are not doing educational work because we have no educational missionary. The whole programme has to be undertaken here as elsewhere though perhaps necessarily limited by circumstances.

During the year the school has grown from 180 to 278, over 100 of which are boarding boys. Our five classrooms are full to capacity. We have built two large brick buildings, one of which is ready for the roof and the other almost ready. One of these is a dining room to seat 150 boys and the other a building of the same dimensions for a dormitory. Seven new brick buildings have also been erected this year at the Location for dwellings for minister and married

students. We have also made a kiln of 50,000 bricks which are now ready for burning and these will be ready for use early next year after the rains are over. What are we going to build? We can't say yet, but we shall then decide the most urgent thing to be done. On a mission station one cannot keep house without a pile of bricks.

Other development work has been done in planting a grove of trees and new land has been stumped and prepared with contour ridges so that we hope we shall not have to purchase 300 bags of mealies next year as we had to this year.

The usual work among the women of the Mission and the neighbourhood has been carried on by Mrs. James who has had charge also of the dispensary work for the boys in the boarding department of the school.

We are trying to keep the religious training in the foreground and at the centre of all activities in our Mission. We are glad to report that the special prayer meetings that were begun as a result of and following the Camp Meeting of more than a year ago have continued throughout the entire year. These are meetings held in the homes of the people living outside the Mission and are in addition to the regular weekly prayer meeting held in the Mission church. We had the usual special week of meetings during Easter week and this year they were well attended and the means of much spiritual good. This year we held Harvest Thanksgiving Services in our Mission Church and I think profitably used the occasion to teach lessons of Stewardship and God's part in the providing for our needs. Our congregations continue to grow. Our present church building is not large enough. Last Sunday we had 423 at our morning service. We are very grateful to the Board of Foreign Missions for making available a loan of £300 which will make it possible with what we have in hand to make the much needed structural alterations and enlargement. We plan getting the materials ready so that we may start on this as soon as the rainy season is over. The Sunday School has been reorganised into three departments and in addition to this a Cradle Roll department has been started. In connection with the Cradle Roll we are trying a special feature of having the parents of the children stand before the congregation with the children on the Sunday of their birthday week each year and in some suitable way remind the parents of the vows they took at the presentation of their children for Baptism and to urge upon them the necessity of teaching obedience even in the very early years.

Village Churches

Our out-station work is just as much a part of the picture

of our work as is the Mission centre. The one very largely depends on the other. The intensive work may be done in the centre but much of the wellbeing of the future of our Church depends on the quality of the work being done in the out stations. While we are having a measure of success on our mission stations let us not forget that some of the hardest work is being attempted by our fellow workers in the villages and with a measure of success sometimes that should be a cause for us to marvel. I am more and more convinced that as often as we can we should ALL go out from our mission stations to these out-posts and by our presence and helpful advice bring encouragement to those there who sometimes desperately need it.

The Mrewa Circuit has made good progress during the year. At last Conference the Rev. Isaiah Munjoma was changed from the town work in Salisbury where he had been for some eight years and given charge of this circuit. During the year he has come to know this new field and has had a part in its development. Two schools that had been closed for years have been reopened and during the year six new preaching places have been added.

The Mangwende Circuit has also grown during the year from five to nine stations with three schools more than last year. The Rev. David Mandisodza came to this Circuit new last Conference and has shown a very fervent evangelistic spirit through the year.

The Headlands Circuit with the Rev. Hosea Katsidzira in charge has about held its own under difficulties. Most of the stations are on farms and the people of these stations are feeling rather insecure on account of being notified to move to the reserves within about another two years. Some are already moving and for the next two years or so it may be very difficult to hold together these groups in the same stations. At Mutibura station the whole church and station is to be moved because of the changing hands of the farm through purchase on which the church was and on which many people lived and who now must move. This movement from the farms to the reserves will cause some difficulties and make adjustments necessary but in the end it will make for a greater permanency in our work.

Salisbury

The co-operative work in Salisbury is following on the same lines as it has for a number of years. The Rev. Isaiah Darikwa who was appointed there last Conference primarily cares for the members and adherents of our Church who go to Salisbury for work. There are large numbers of these from all the districts in the Conference. These find their

Church-home at the Methodist Church (British Methodists) and form quite a considerable part of the Sunday congregations. For the Class meetings our groups meet alone and are separate. Once a quarter I meet with our people there for Quarterly Conference and on Sunday on those occasions preach to the united congregation. Our minister there takes his turn in preaching on Sundays and when we have Baptisms or Reception of Members these take place in the services of the united congregation. This plan is still working well but because of the necessity most of the class-meetings of both the Methodist Church and the Methodist Episcopal Church have to be held at the same time, on Sunday afternoon, and on account of the lack of rooms our groups have to meet on the open verandah of the minister's house or in the open. This is not ideal and in the rainy season it is often not possible to have the class-meetings. Great need is felt for a small building that could be used for this purpose and for other group meetings for our people there. Besides this co-operative work in Salisbury we have been exchanging services of our local preachers with those of the Methodist Church in some of the stations of the Mrewa and Epworth Circuits whose boundaries join. This occasional exchange during the past two years is appreciated by both preachers and people.

General Outlook

The general outlook on the district I feel is one that inspires optimism. Burdens are being shouldered by the stations as they have not been for years. Several dead causes are being revived. Ten new brick church buildings are being erected. There is a growing desire not only for schools to be opened but for Church work to be established in various parts. There have been requests from our laymen for evangelistic efforts to be made more frequently. Our recent Camp meeting held in August at Manyukwe was a means of great blessing. From the very first meeting there were fully 2,000 present which numbers gradually grew until the last meeting. The greatest sign of all however to me is that some of our people are hungering for a deeper spiritual experience. On a number of occasions recently I have been asked for books of a devotional nature. Others have come asking me to help them to gain a better Christian knowledge and experience. Still others have come to talk over the deep longing of their souls for more Spirit filled lives and on one occasion recently I was called up from sleep long after mid-night to deal with the problems of one urgently needing help and guidance. Such experiences clearly indicate to us that we do not labor in vain. Though we may often be burdened that so many of our people fail to get the full spiritual content of the

Christian life, yet we see here and there that many of them are seeking and realising the fuller life of the deeper Spiritual experience. It is a great and satisfying thing to be able to take up some missionary assignment or project and carry it through to a successful issue, but I covet as I look out into the coming year for myself and for my colleagues above all that we might all commend ourselves by our lives and attitude to our people that they will feel the urge to come to us, unburdening their hearts and seeking for Spiritual help and guidance.

REPORT OF MTKO DISTRICT

W. Bourgaize, *Superintendent,*

Bishop Springer and Fellow-Workers:

As far as the writer is concerned the hardest work of the year is the task of filling in the statistical forms correctly, and, the getting ready the Conference Report. For, there is far more pleasure in getting things done than there is in telling about it. However, the statistics have been prepared and compiled as accurately as possible. The Conference Report I now bring before you.

The year has been a busy one, and, a happy one. We cannot, much as we would like, report a great advancement, but we can report a steady, natural forging ahead, spiritually financially and materially. As I faced my congregation a few Sundays ago, a congregation which filled our church-building to over-flowing, I felt that I would not willingly change place with the best paid pastor in America. We have had to make ten additional benches in order to seat our constantly increasing Sunday congregation. Two large additional rooms of kimberly brick have been erected in order to accommodate the increasing number which attend our Day School. School fees have been doubled and in some cases trebled in order to get them in line with other units of our work and still they come. All the available farm land has been contour-ridged in order to prevent any further damage from soil erosion. All the food required to feed the sixty Boarding Boys has been raised, as last year, on the place. Furthermore, with our present rotation method of farming the land is becoming productive each year. An additional small plot has been planted to gum trees. We now have sufficient gum trees to meet all our building requirements. At the Mission we urgently need the services of a well trained industrial teacher—a man capable of teaching craftsmanship in order to meet the Government requirements. Standard IV

was added to our school schedule this year but owing to our inability to teach animal husbandry due to the fact that the Mission is located within an anthrax area thus making it impossible for us to keep cattle, this standard will have to be dropped next year. The commodious church building at Mtemwa Leper Settlement is completed and is now being used for all church services. Much credit and commendation is due Jonathan Wherekwere who has been and still is the leading spirit in all things pertaining to the Kingdom. There has been considerable sickness among the Teachers, inconveniencing the work to some extent. The work in the villages is in a stage of transition. Any further building operations will necessarily have to be curtailed until the Government plan of Centralization has been completed. The whole of the Makaha valley between Makasa and Makaha is to be centralized this year. Therefore, in this one area plans can now be made of a permanent nature. It is in mind to reduce the number of village schools to ten during 1939 thus making it possible for them to be supervised by a qualified native deputy during the absence of a resident missionary during that period. This plan will also make it possible to send several Standard III. teachers to school for further training.

At Easter a week's special services were held at Mtoko Center. The Native Christian Convention was held this year in the Mtoko District. In many ways it was unfortunate that a time was chosen for this meeting when very few of the ministers and teachers from other districts were able to come owing to conflicting duties. Nevertheless, there was a record attendance of the local people and a splendid Christian spirit prevailed throughout the meeting. The Rev. Isaiah Munjoma presided in his usual inimitable way. The Rev. Samuel Chieza was elected President for 1939. Many of the discussions were of great importance to the whole church though a few were distinctly out of place owing to their being solely of an educational nature; therefore belonged elsewhere.

The Rukwadzano, which was held early in September just previous to the annual Camp-meeting, was largely attended. It was held at Mudzonga-the place now chosen for all of our big gatherings. During the days of meeting, in which the women did most of the speaking, there was much prayer, song, exhorting and record altar services. These meetings, held annually, as they now are in all parts of our work, cannot but have a very beneficent effect upon the womanhood of Southern Rhodesia.

The Camp meeting held during the first part of September proved a blessing to many and resulted in the quickening of the religious spirit throughout the whole of the district. During the last day of meeting, greatly to our surprise and

pleasure, we were privileged in having Bishop Springer and Dr. Beiri with us. Their helpful, inspiring messages were enjoyed by all. The acid test, here as elsewhere, lies in the attitude of our people toward 'giving'. While it is true that the amount that is given is determined to some extent by the economic condition of the donor; yet, of far greater importance than this is the spiritual condition. When one loves Christ with the whole heart and gives Christ and the interests of His Kingdom the first and chief place-then and then only will our native people give and nothing will prevent them from giving. In this district, it is a tragic fact that many of those best able to give 'a lot' give the least. To make use of native thought, the remedy so often needed is not necessarily cattle, crops or material things but a genuine love for Christ and purity of heart. If only our native folk would learn to trust the Lord with their tithe-what a blessing would come to their own lives, and, what a difference it would make to our financial problems and difficulties. At our last quarterly Conference two of our leading women were elected local preachers.

The Needs of Work.

The great and urgent need for Mtoko Mission is not primarily one of finance though finance of necessity does enter into the question to some extent. If Mtoko is going to be the influence for the Kingdom that it should be then it is very very essential, imperative that it should be moved to a location further north into the Native Reserve. The following potent facts give the reasons why this should be done as soon as expedient.

a. Owing to our close proximity to our white neighbours and to the office of the Native Department, we are practically unable to hold revival services. For the same reason we are unable to hold our regular quarterly meetings at the Mission but are compelled to hold them at our nearest village five miles distant.

b. Furthermore, there is not land enough belonging to the Mission upon which to expand. The Mission owns, freehold, about sixty three acres of land. Twenty five acres of this is in the form of kopje or stone out-croppings. Already we are crowded for room for more urgently needed buildings. There is not land enough to furnish either the minister or the teachers with sufficient land for gardens-let alone any for the married students. Our mule compound is entirely off the Mission land and is granted because of the good-will and kindness of the Native Commissioner. We also lack land,

suitable in area and with an adequate water supply to meet the needs of our Day School which also has to meet and to comply with the usual Government industrial requirements. For, as you all know, Government industrial requirements demand that each and every pupil have a piece of ground for the teaching of crop rotation etc.

Finally, our present location is on the extreme edge of the Mtoko Reserve, only fifteen miles from our Nyadiri Mission. Permit us to move twenty five miles within the Reserve-where we will not only be nearer to the bulk of our native people, but also, where we can have room to expand naturally not by forcing methods, and where we may have perfect freedom in the conducting of our religious services; Then, and THEN ONLY WILL MTOKO EXERT THE INFLUENCE for the KINGDOM that it was INTENDED to do-to lead our native folk onward, forward and upward to the great loving throbbing heart of God.

REPORT OF MUTAMBARA DISTRICT

E. L. Seils, *Superintendent*

Bishop and Fellow-Workers :

Again the Mutambara people send greetings to the Rhodesia Conference. The church work has been growing slowly and steadily. We did not have the District Camp-meeting this year but many of our people attended the Gwese Camp. Local Preachers, Exhorters, and members of the Rukwadzano held services in all parts of the District during the Easter season. Many people were led to Christ. Throughout the year Christian workers have been faithfully going on Sundays to help the village churches and to untouched communities.

The church building at Mutambara is entirely inadequate for the large number of people that attend the services. There is an urgent need for a new building.

The Sunday Schools are growing. The total enrollment for the District is 1, 328 which represents a growth of two hundred this year. There are less than one hundred Sunday School Teachers to train this large number of children in the Christian way of life. There should be double that number of workers in our Sunday Schools. The harvest is great.

The Word of God grows in the hearts of the people and many have been added to the church as full members and probationers during the year. The spirit of service is growing and the Missionary society is doing more effective work. We are praying for a greater vision among our people so that they may pass on the Christ to those that are in darkness.

Rev. and Mrs. Roberts went on furlough last March. We are very fortunate to have the aid of Mr. and Mrs. deBruijn and Mrs. Wratten at Mutambara Mission. The Boys and Girls Boarding Departments are going on as usual. A three room sun dried brick dormitory has been built for the boys. Village and boarding pupils are receiving the benefit of an enlarged industrial building where sewing and laundry work is being taught. There are two detachments of Wayfarers which are doing excellent work. We feel the loss of two active leaders who have been married. Our loss is the gain of the community and thus the purpose of our school is again accomplished. This year we have organized a troop of Pathfinders with twenty boys and a troop of Trackers with the same number. These organizations in uniforms added much to the display during the visit of the Governor and Lady Stanley this year. More than five hundred students greeted them.

As we look back over the Conference year we realize that it has been one of the busiest in the history of Mutambara Dispensary. The rainy season was short and consequently there has been an increase of sickness. The mosquitoes seem to be more active and the parasites more virulent than usual. The cases of pernicious malaria have greatly increased especially the cerebral type causing a large number of deaths among both the children and adults. God has blessed the feeble efforts and real miracles of healing have been performed. This has been a very bad year for contagious diseases. We started with measles and small-pox soon followed. This called for a wide spread campaign of vaccination. Miss Penny spent many days in assisting the Government in this work. A short time after the small-pox, whooping cough followed taking its toll of little children. Then the measles and flu brought on complications of pneumonia.

Our Dispensary work continues to grow in spite of the fact that the staff is very small. The accommodations for patients both medical and maternity are taxed to the very limit. We are charging the patients a fee according to the treatments required. This is paid in cash or grain. It is most difficult for many to pay. Several bags of mealies and over a pound in cash have been given to assist with the much needed finance. This new support is a new thing to them as they have been cared for free of charge, except for injections and maternity cases.

We feel that the work of the Dispensary is very important in that many of our patients are heathen people. We are not here to merely administer to the body but along with that task to heal the spiritual illness that is the cause of so much of the physical. We all know that the missionaries in these days of heavy programs and short staff do not

have the opportunities they once had of village visitation and personal work. In our hospitals and dispensaries we have an increasing opportunity of doing this kind of work. We are making every effort to care for those who come seeking our help.

The total enrollment of the children in the village schools is 927. These schools are going along in the usual way. We have opened Munyora Church and school. Already there are fifty-two children attending. Rupisi has been officially closed, but the church work is being carried on by a group of Local Preachers and volunteer workers from Mutambara Mission. Many of our village school teachers are young men who finished Std. 4 recently. They are doing excellent work in spite of the lack of teacher training. Some of them are looking forward to entering school again. The work is growing and we hope to have trained and experienced teachers at each place as soon as possible.

We greatly appreciate the co-operation of the entire District as we have worked together in doing that one and great task for our great Master and Saviour.

REPORT OF NYADIRI DISTRICT

T. A. O'Farrell *Superintendent.*

Bishop Springer and Fellow Workers:

The last Conference year, more than any other in recent years has been given over to reorganization of our work at Nyadiri. Several factors have made it necessary, not the least factor being a program of building.

The Women's Foreign Missionary Society had carefully saved up some funds with which to make some additions to the school building which had been long so overcrowded that the girls dining rooms had to be used for class rooms. Starting with the idea of four rooms built separately from the main building, the plan developed into one with four wings as additions to the present Assembly Room, two to be built now and the other two, the larger ones to be added later. But when completed it should be a worthy addition to the buildings of our Rhodesia Mission. The present work will include four large class rooms and four supply rooms. We hope to have all under roof before the end of the year.

Through the efforts of Bishop Springer a Grant-loan was secured from the Government, half to go into the school, and the remainder to be used in erecting a much needed dormitory for the boys. We hope to have the dormitory ready for occupancy by the end of January.

Under the new educational plans it seemed necessary to separate the sub-Standard students from the Standards, and put them into a separate school. So we are erecting a good building of Kimberley brick, down near Nyaitenga River, but on the Mission and about $\frac{1}{4}$ mile from the main school. It will comprise three large class rooms and two supply rooms. This year there were approximately 200 in the active enrollment in the Standards and almost the same number in the sub-Standards, although the total enrollment is larger. Next year it appears that we shall have about 325 in the Standards. For some time every post has brought applications for entrance next year. Of course we can receive very few of them.

We believe that by keeping the sub-Standard school near we can give it such supervision that it will be of a much better grade than an ordinary village school. With this idea in mind we plan to move a school onto the Farm this year, and another next year. One will be near the Nyadiri River and the other near the Muswe Dip Tank.

By working through these schools it seems as though we should be able to see along these two boundaries of the Mission Farm, a distance of eight to ten miles, a community development on the Reserves, similar to that which has taken place so splendidly just across the river from the Mission.

Funds for material developments have not come in large amounts, but several plans for which we have waited long seem to have providentially materialized this year. The Board has made available some money for the first unit of the hospital. The plan is laid out and work can start at once. A well near the Dispensary has been sunk, and it appears to be the best one we have yet put down.

The orphans have become a problem, being so near the sick, and so exposed to all kinds of contagion. An orphanage has long been contemplated, but we did not think it could come at once. However, after the outbreak of small pox so near the babies Miss Whitney decided to have the building started with some funds she had, we shall hope to get the remainder. So another little gang is getting on with the orphanage. Fortunately we have about 130,000 bricks burned besides those for the school which Miss King provides.

Mrs. O'Farrell has had to discontinue her classes with the women because she had no place in which to meet. This work is so important that we are not willing that it should be discontinued any longer. She is meeting most of the cost from her tithes, and she is also to get her building.

The Native Commissioner, and the Chief Native Commissioner expressed a wish to assist the Mission by putting in a stone and cement bridge across the Nyaitenga. Mr.

Bullock told me last week that he had sent out the money. We are very grateful for this assistance. On more than one occasion the river has held up traffic in the rainy season in cases where patients were trying to reach the hospital.

The church will have to wait a little, but Nyadiri also shares in the fine gifts and loans being sent out by the Board. We will organize a campaign to raise a further amount as soon as it can be arranged.

Our joy in being able to get provision for these acute, and long standing needs has almost been equalled by our fears that with such an inadequate staff our energies may be expended this year on the work of it, and that the vital tasks and contacts in our every day work may be neglected. We have prayed a good many times that we may not fail in this respect.

Of the Girls School Miss King writes, "The Girls Boarding Department does not grow in numbers only because it has long since reached the limit of its capacity. Applications come from far and near and there are students from Enkeldoorn, Gatooma, and Que Que, as well as many from Salisbury. The building program begun last year is being carried out and is taxing every resource of funds and labor. Five rooms of adequate size are expected to be ready for occupancy at the beginning of the next school year. Additions of equipment, building, and staff are urgently needed, but in spite of the lack along these lines we have perhaps never had a better year of school to report than the one just closed."

Miss Beulah Reitz came in February to replace Miss Scovill whose furlough was overdue. Miss Reitz says, "When Miss Scovill went on furlough she had so planned the school work that her successor found all the wheels well oiled and the school in excellent condition. The school is understaffed, yet the teachers have done remarkably good work during the year. One teacher has prepared an exceptionally strong class (in two sections) of about 80 pupils to enter Standard I. Some of the the other classes are making similar strides."

Immediately after last Conference Dr. S. M. Low from Cape Town came to Nyadiri. She was subsidised by Government, and had charge of the Mrewa Dispensary as well as other work in the Mrewa and Mtoko Government Districts. We have waited long for a resident doctor. While Doctor Low was not a missionary, she had a nice manner with the Native people and immediately won their confidence, and the results more than justified our expectations. A call once a week by a doctor is valuable, but having one observe the patients daily makes for an efficient handling of cases not otherwise possible. The doctor has returned to the Union

to be married but we shall hope to have another to take her place at an early date. Besides a steady increase in the volume of work, Dr. Low and Miss Whitney handled some fairly large jobs and did them well.

In January there was an outbreak of anthrax, and it developed that many native people had eaten meat of the infected cattle. One woman at least had died. Inoculations had to be given several times to those concerned and the roads were almost impassible. The place was about 40 miles from the Mission. The two women carried out the work with aid from the Native Commissioners Office, and there were no more cases among the people.

Again in June and July there was an outbreak of small pox caused by an infected boy returning to the Mission from Rusapi. When it became known, there had already been many contacts. But so well did they isolate every known contact that not another case occurred.

The Native Commissioner at Mrewa offered the testimony that, "Doctor Low made a magnificent success of the Mrewa Dispensary".

The new hospital will relieve congestion and should make possible better work. But a doctor and another nurse are sorely needed.

The water court sat at Nyadiri late in June, and we understand that we are to be allowed to dam the Nyaitenga, and have water for domestic purposes and for irrigation. A recent proposal by an engineer indicates that we can place the dam just below the Mission, and pump the water up with the same engine that will do the grinding and lighting. While plans are not complete it does seem that the water supply is thus brought a little nearer to reality.

For the first time the Mission has had a good supply of feed sufficient to take the cattle through the dry season safely. Sun Hemp hay is now claimed to be almost as rich as bean hay or lucerne. It is easily grown and also enriches the soil.

The mealie crop was about the same as last year, about 40) bags for the Mission, about the same amount for the Location people.

The Inspector's report on the Agricultural work and carpentry was that it was the best he had found in any Boarding School (not Training School). As the teachers had had to be left very much to themselves, both Edward Makoni and Hector Kambombe felt very much pleased as did all of us.

We have feared that the work of the Church might be neglected, simply because the year has been filled with so many and such diverse tasks. And I know there has been neglect.

Sometimes it has seemed almost impossible to get out the preaching plans. The two ministers, Rev. Moses Muparutsa and Rev. Jonah Chitombo have had to take on more and more of my work. And they have done it uncomplainingly. Mrs. O'Farrell has taken over more of the office work and correspondence, and many other smaller duties. And there are indications that a spiritual work has been going on. The services are largely attended, in fact crowded. The meetings at Easter time were effective, and a good many people were helped. We have stressed the Aldersgate experience frequently, and have planned to let no services go by without some bits of Methodist History and Doctrine being given.

For some months I have noticed a new earnestness and steadiness among the teachers. Then one came and said that he felt called to the ministry, then another, and another, until there were five. Four more kraal school teachers, and and they some of our best, are coming to Old Umtali for further training. Then we were reminded that for about a year and a half men and women all over the District have been praying that some one of their sons would enter the Christian ministry at God's call. I do not know how we are to replace these men, but I believe it is right that they should go on to larger work. And we are trusting Him who has evidently called them to send others to take their places. I believe all the vacancies will be filled.

It is not surprising that this same new earnestness should be reflected in the boys. That seems to be the case among many. During the present holiday four of the Standard IV boys are out preaching and teaching at stations which are waiting to be reopened.

Our Camp Meeting was the best we have had. It did not seem to matter that I had fever during the first few days, and that Jonah Chitombo was ill all the time. Moses Muparutsa managed the meetings well and there was no dearth of good spirit filled preachers. Many were brought anew, or for the first time, face to face with things Spiritual and received new life. The numbers were larger than at any previous Camp. The people are beginning to look upon it as a fixed institution, and I think they would miss it very much now if it should be discontinued.

In May Mrs. Boswell asked if she might hold a Vacation course for village teachers at Nyadiri. She said it was to be a thank offering for help she had received when at the Mission. We were of course delighted, as was the Inspector. The work was well planned, and well carried out. So far as I know the testimony of the teachers was unanimous that the course was a very helpful one. And improvement is noted in every school that I have visited since. In fact our

village schools are improving. Jeannes Teacher Jonathan Maranke is responsible for a good deal of it.

At Manyika we have our first Village Boarding School. There are 14 boarding boys, and others come in by bicycle. We have two teachers and should have a third. The Minister has general supervision of everything. The people seem to like the idea. While this plan is still on trial, I believe it has great possibilities. The general tone of the school is far in advance of that of an ordinary village school. And there is no doubt but the surrounding schools are picking up.

We need a similar school far up north, and with a Native Minister living there. We have more than 50 regular preaching places in the District, and only two ministers. The Maramba and Fungwi Reserves are ripe fields. Just across the Mazoe a large Reserve in Darwin stretches alongside the Fungwi for 40 miles—a field untouched. I hope this Conference will find a way to make available another minister for Nyadiri District. Our two ministers are overworked. Each has heavy duties at home, and in addition the many long bicycle journeys are very wearing on them.

Our most urgent needs are for increased staff. Under the new Educational plans we are expected to earn grants for two women. In addition they expect us to add Standard 5 this year, and Standard 6 as soon as possible. With another woman to assist with the responsibilities it can be done, otherwise it does not seem possible to even earn the grants.

We close the year with gratitude to God, for his mercy, for the joy of work, for health, for his faithfulness, for his great love, for the light of his Spirit which he has tried to throw on the way before us.

REPORT OF OLD UMTALI DISTRICT

M. J. Murphree, *Superintendent*

Bishop Springer and Fellow-Workers :

Since our last Conference our forces have been strengthened by the coming of Sister Rosa Rydell in December, and Miss Quinton and Sister Gugin in January. There were also four new Native teachers who had finished the Teacher Training Course ready for appointment in January. One of these, Elias Nkonyama, was appointed as head teacher at Gandanzara; David Mukombiwa, Priscilla Mukwedeya and Marigold Munjoma were added to the school staff at Old Umtali.

The Gandanzara Circuit was divided, forming the Gandanzara and Mukahanana Circuits and Jonah Machiri was

appointed minister of the new circuit. Paul Malianga who had been head-teacher at Mukahanana was transferred to the teaching staff at Old Umtali.

On April 8th Baba Greeley was called to his Eternal Home and is greatly missed on this campus and in the camp meetings of this district as well.

On March 31st John Mack came to make his home with Mr. and Mrs. Huie. Also on December 3rd a daughter came to the home of Rev. and Mrs. Jonah Machiri. Martin Luther, the little son of Rev. and Mrs. Amos Kapenzi was born on April 20th, and April 22nd was the date of the birth of Susanna, daughter of Rev. and Mrs. Josiah Chimbadzwa.

Great difficulty has been experienced in the work of the Chiduku Circuit caused by the smallpox quarantine which was put into effect on July 13th and is still on. All school work and church services have had to be discontinued during this quarantine.

EDUCATIONAL

Theological School

The Theological School has continued in recess throughout this year, but plans are being made to start a new class on the three years' course in January of next year. Nineteen applications have been received, and it now looks as though we would have a class of ten or twelve choice young men ready to begin the course.

The Bible School conducted by Miss Mullikin for the past few years was discontinued in June, owing partly to the ill-health of Miss Mullikin, and due in part to the fact that her appointment as Sunday School Evangelist and Editor of Sunday Literature required all the time and strength she had to give to the work.

Teacher Training

The Teacher Training school has nineteen in training, and some of the teachers who have had many years experience in this school feel that this is perhaps the most promising class the school has so far had, which is a testimony to the faithful work of Mrs. Taylor and a fitting climax to another term of service. The class which was graduated from the Teacher Training course in 1937 all went out as teachers, with the exception of one who is continuing his education in the South, and they have been doing splendid work. We anticipate as good a record for the 1938 class.

Elementary School

The Elementary School, which now includes all classes from Standards 1-6, continues to be up to full capacity, and a number of applications especially in the lower Standards are having to be refused.

Industrial Department

Hartzell Training School continues to follow the policy started by the Founder, Bishop Hartzell,—the education of the head, hand and heart. In trying to carry out this policy we have been greatly handicapped by the lack of a trained industrial missionary to carry on the Carpentry and Building Department, but we look forward with gratitude to the coming at the beginning of next year of Mr. Hamrick who is being sent out by the Board of Foreign Missions for this department.

Agricultural Department

The importance of training in agriculture is never lost sight of, and this department has been carried on in an efficient manner by Rev. H. E. Taylor who contributes the following notes about this work :

“This past planting season we were again kept on tenterhooks wondering when rains would come. However, we planted treated mealies in dry soil which were ready to grow when the belated rains came.

“Our forty-eight, one twentieth acre, demonstration plots were a real show this past season and were helpful educationally as well.

“Two or three thousand eucalyptus seedlings were planted on sloping, stoney, red soil below the irrigation furrow as a part of our annual forestation plan.

“There was a nine acre crop of about 100,000 stock melons that gladden the cows and pigs.

“The maize yield was below that of the two past years, due to weather conditions, but averaged about seven bags per acre on 60 acres.

“The statement of the dairy inspector came to us indirectly that the Old Untali Mission dairy layout was the only one in the colony that he had passed and given a certificate without suggestions for changes or improvements. Naturally, we do not mind hearing such news.

“Fifty-four families on the Mission had divided among them about 170 acres of land which they worked on our regular 4-year rotation of maize, Sunn hemp for green manure, maize, and mixed crops (mostly legumes).

“The 21 miles of erosion bunkers are making a definite contribution to the meeting of that problem, which now has the attention of our Native people as to the need.”

Mr. and Mrs. Taylor expect to go on furlough in about six months' time, but we rejoice that the splendid work in which they are engaged will not be discontinued by their going. We look forward to the coming of Mr. Gates who has been taking some special subjects in Columbia Teachers College during his furlough, and is well fitted for carrying on the

work in the Teacher Training Department to be laid down by Mrs. Taylor. We also look forward to the coming of Mr. Braithwaite, another new addition to the Old Umtali staff, who is to carry on the agricultural work.

Fairfield Girls' School

Miss Quinton reports on Fairfield Girls' School as follows :

"One hundred and twenty-two girls have been enrolled at Fairfield during the year. For various reasons a few have withdrawn, leaving the number at present one hundred and fifteen. It is difficult to say at this time just what effect the increase in tuition required will have on the enrollment next year.

"Sixteen girls from last year's enrollment, four of them graduates of Hartzell Training School are doing satisfactory work in village and central schools.

"For many years we have found that helpful personal contacts with individual girls have been not only difficult, but well-nigh impossible. This has been due in part to the large numbers, but chiefly to the fact that both teachers and pupils have been involved in an educational program so rigid that nothing but the most urgent matters could have adequate attention."

Village Schools

In the list of appointments for the District last year there appeared a new appointment, "Assistant Superintendent of Schools - John Nduna". He has given full time to supervision work in the village primary schools. I am going to give you the report on his work just as he has given it to me.

"As regards the village schools the Native people of this colony seem to reach the vantage ground at which their eyes can now see the wide field of long desired knowledge based on religious education with full backing of the Missionaries and the Government. Having learned the source of this blessing the local papers bear many statements and requests made to different Missions and the Government authorities by the many enlightened Africans to raise the standard of Native education of their colony, to which with great concern the authorities have been and still are laboring to improve the conditions desired in the work of the mind, hand and the soul.

"As is always the case with many Africans to ignore their responsibility to share in contributing towards the cost of educating the young, I am rather pleased this year by the fact that many parents participate at the earliest opportunity to give attention as to school fees and other required materials for the child to use in the school. More than few parents in the

villages are now taking greater interest by realizing the importance of their children's learning. The attendance in most kraal schools is much better, and there are now more children in each village school than last year. Many of the home duties which have been from time to time holding children back are now thought secondary by some parents. This year, the total number of children under instruction is 1,753 and the average enrollment is 70 children per school. This beats last year's enrollment by 24 children out of 25 aided kraal schools. Due to lack of teachers two aided schools unfortunately remained closed, though the people were able to support the teacher.

"Beside the non-school going children of the heathen people it is a pity to state that there are hundreds of unfortunate children of the deserted members from various existing churches who have joined the movements which are doing a terrible havoc, drawing the Bantu youth to the world of illiteracy and superstition.

Progress of the Kraal Schools

"The supervision of the kraal schools is receiving fuller attention of the four responsible men, who suggest, help and encourage the home-teacher during their visits. Signs of improvement are being seen on all lines of school and church work. More than anything else it is pleasing to have with us a group of eleven female teachers with First Year Teacher Training, who have been appointed for village work realizing that they are called to impart light to the world. They are doing splendid work.

"One of the nice features of Hartzell Training School is the group of Std. 7 pupils who have been out to the villages by couples to study the managing of the kraal school. We hope this group will assume the duty of the out-stations next year.

"Regarding school equipment, only a few schools are still behind with improper or insufficient equipment, and we hope these will be well equipped too in the near future.

"In my mind next to nothing I seem to see many of our schools on the farms strangled to death by the law of centralization of Natives on the Reserves. It looks as if a reserve is the only area in which every Native will be driven to stay. What will happen to our schools and churches on the farms? Today there are empty places in the reserves to which people are being allowed to go and build permanent homes. I humbly beg the Conference and District Superintendents to accept my view on this point, and would propose the establishment of temporary unaided schools to start with which shall be replaced by aided ones. Native people are willing to

pay whoever their teacher be, whether approved or not. The aim of this is to safeguard our members from disappearing into unknown areas."

MEDICAL

It seems that the needs in the medical work this year have been greater than before, but instead of having one trained nurse as last year, this year we have had three who have all given their best in ministering to the physical needs of the people, and have also made most valuable contributions to the spiritual welfare of those to whom they have ministered. Sister I. P. Gugin has had the care of the girls in Fairfield Girls' School, and the orphanage. Sisters Hansson and Rydell have had the maternity hospital, the care of the boarding boys, and the general dispensary work. Sister Hansson reports on the medical work as follows:

"We feel that we have had a good year in our Medical work at Old Umtali. Soon after Conference last year we greatly rejoiced in receiving our new Swedish Sister, Miss Rosa Rydell. She has already proved herself, and we hope that she will be as happy as she is useful. Then, our much longed for hospital building was completed and again we were happy to move in to this our new home. Words fail to express how thankful we are for this new place. If any mission activity needs pleasant and proper equipment it is the medical work, but up to now we have had the most primitive, and we have been more than once near despair. We sincerely trust that we shall be able to continue the buildings until we are all settled on our new, lovely site.

"Much of our time goes in teaching, not only our class of nurses, but the patients and more especially the mothers. Our pre-natal and Baby clinics are well attended. There we can see a marked progress. We were happy and proud of the twelve babies under nine months, receiving prizes during the show days at Old Umtali.

"We believe that the teaching of previous years on better food, more fruit, milk and green vegetables, as well as on clean living and better sanitation has started to bear lasting fruit.

"During the year we have spent five weeks on the district. Our district work has been mostly in class work with fathers and mothers, teaching better sanitation, cleaner living, healthier children and happier homes. It is still true that in many places our people live even below the animals of the field. We have seen untold suffering, misery and death. Many more people die in the kraals than are brought to our notice. The hold of old and even evil customs is very strong. The need of the districts is very great, many doors are now open,

even old people come to hear this new teaching and heathen people also come to the classes. The only question is, How can we find time and workers to do the work?

"We fear that this year has been a year of heavy losses. The mortality among the children in the kraals is high. A severe whooping cough with complications has proved fatal. Many mothers' arms are indeed empty. In one family four children died.

"Our days are busy. We want that our nurses shall be efficient in caring for the sick, but we also want that we all shall give that spiritual healing which our people need so much, and that will transform their lives."

EVANGELISTIC

While great emphasis has been placed upon the training of the head and the hand, we have tried always to keep uppermost and foremost the training of the heart, the building of Christian character. This we have sought to do through all of our contacts, but especially in the Bible classes in the school room, the class meetings, the Sunday School and regular preaching services, and in our Camp Meetings. Brother Josiah Chimbadzwa, the Pastor of our Church at Old Umtali has shown himself to be a faithful shepherd of the flock, a diligent student of the Word, and a strong preacher of the truth.

He reports on the work of Old Umtali Church as follows :

"Jesus Christ has been the theme of my preaching this year. To know Him, to be found in Him, and to be like Him is the most wonderful thing in the world. This is our Christianity and nothing else. Glory be to His name!

"This was especially done during our Easter meetings when everybody by faith was asked to fix his eyes on the Old Rugged Cross on which the Prince of Glory died, and he who said, "And I, if I be lifted up from the earth will draw all men unto me" fulfilled his promise.

"Our congregation is very large. Every Sunday the Church is filled with eager people, and our need of a new building is very great. We are looking forward to the day when we shall have a better Church in which to worship God.

"We are very glad to report that our Missionary Society for spreading the Gospel to the heathen is growing very strong. The Lord is revealing to us more than ever our responsibility to rescue the perishing. If any one wishes to see the growth of Old Umtali Church, let him visit us on our Missionary Day."

The work of the Church in the villages under the leadership of Pastors Philip Chieza; Obadiah Chimonyo, Silas Kasambi

ra, Jonah Machiri, Patrick Machiri, Johnson Maramba, and Zechariah Mukombiwa shows very encouraging increases in membership and in the financial, social and spiritual interests of the Church. This year I had the joy of receiving over 150 people into the Church. All of these testified to a personal knowledge of the Lord. Some of them are young people, others are middle-aged, and still others have been seeking the light for many years and now in their old age have come to trust in Christ. As I have listened to their testimonies I have been impressed with the fact that so many of them were converted in the Camp Meetings or in the Rukwadzano Rwe Wadzimayi.

On August 28th a splendid new Church building was dedicated at Nhunhama. This new Church building is well built and has a seating capacity of about 600. A new Church has been built also at Rupinda, and the dedication service is to take place soon.

Camp Meetings

Three Camp Meetings were scheduled for the District, but one of these, the Chiduku Camp, had to be given up because of the smallpox quarantine. The meetings at Nyatande and Nyakatsapa Camps were means of great spiritual blessing and uplift to the people.

RHODESIA MISSION PRESS

The Rhodesia Mission Press continues to meet a very important need in the work of the Rhodesia Conference. In addition to the usual printing of Sunday School lessons, Conference Minutes and other supplies, the Press has brought out a new edition of the Catechism and also a new edition of the Ngoma (Hymnal). It is with regret that we have to report again that we have been unable to print the Umbowo during the year due to lack of a sufficient number of subscriptions.

It is with deep gratitude to our Heavenly Father for His blessing upon all the efforts that have been put forth that we record some of the progress that has been made, but as we lift up our eyes and look upon the fields so much comes into view that so urgently needs to be done. Some of the outstanding needs are for more trained ministers; refresher courses for those who are already ministers; more of the higher Standard teachers trained not only in the methods of teaching reading, writing and arithmetic, but more thoroughly grounded in the Scriptures, and trained for Christian leadership; more trained medical assistants; organized groups of young people in our out-stations for training for leadership in the local churches; Circuit and District

organizations of our young people with a similar organization and purpose to our Epworth Leagues in America. These and many other needs are calling for the attention of those who are called of God and are prepared to devote their time and energies to these activities.

Conclusion

In conclusion we wish to express our appreciation for the fine spirit of fellowship and cooperation which exists amongst the workers of the District, and our gratitude to our Heavenly Father for His blessings upon the efforts that have been made, for unto Him belongeth all the praise and glory for the victories that have been won. We look forward with a confident hope as we dedicate anew our lives, our talents, our all to Him for the coming of His Kingdom in Africa and in all the world.

REPORT OF THE UMTALI DISTRICT

E. L. Sells, *Superintendent*

Bishop and Fellow-Workers :

We express our experience of this year in the words of John Wesley, "The best of all is, the Lord is with us." As this year we have emphasized the conversion of John Wesley we have individually become more aware of the transforming power of the Lord Jesus. Our work has been heavy but we have found Christ to be sustaining.

There have been but few changes in the workers of the District. We have been most happy to welcome, Rev. and Mrs. Christian, our Indian Missionaries to Umtali. The District has done excellent team work and all have shared in making the task of each other lighter and easier.

The Churches

There are twenty-six churches on the District. These are being served by four ministers and fifteen accepted supply pastors, assisted by seventy-nine local preachers and seven exhorters. The Stewards have been faithful and devoted to the work of the church. At most of the churches the class meetings have been well attended. There are twenty-eight Sunday Schools, with a total enrollment of 1,697, which are taught by volunteer teachers. We greatly appreciate the fine help that Miss Mullikin gave to the Sunday Schools of the Marange Circuit.

The Rukwadzana rwe Wadzimayi have been active and have been a real force in evangelism. There are about 600 women in the Rukwadzana of the District. The Annual Meeting was held on Zimunya Circuit on the invitation of the Chief. It is estimated that 4,000 women attended. The Annual Camp-meeting was held at Gwese last month for a period of ten days. There were 1,754 people who attended the services. "Three hundred people were converted and many back-sliders were brought into the fold. Stolen things were restored and the church people were greatly strengthened."

The conversion of one woman is typical of the way that God worked in the hearts of the people. "This woman was known as the chief leader of the spirit dances and claimed to be possessed with spirits. In the early days she lived in old Chief Marange's village. (The Chief was the father of the Rev. Thomas Marange.) She led the spirit dances for the wives of the Chief. He gave her an axe, sword and clothes. When the Chief died she moved with her husband to another place.

One time when her son fell ill she called the Witch-doctor to find out the cause of the illness. He said that a spirit wanted meat to eat and beer to drink. She killed an ox and made the beer. All the people were called to the feast to partake with the hungry spirit. After she had done everything the boy died and the baby of her daughter-in-law died in the same way. She said that she did not know what to do. After a month she heard about the people getting ready to go to the Camp-meeting where the Christian people would pray to God and that God could save people from evil spirits.

'So I made up my mind to come here. I heard the Word of God preached, that Jesus has power to cast out evil spirits from people and make them holy. I heard about the love of God and now I have given myself to Christ and He has saved me. He has put the witness in my heart that I am His and He is mine.'

She brought her charms to the altar. When the congregation heard her testimony the people were greatly inspired and sang, 'Hakuna Zita kunga Jesu' (The Sweetest Name). When the Camp closed she went home a happy Christian."

The Church buildings are gradually improving as many of the old pole and mud buildings are being replaced by brick. There are seven new buildings being finished now.

The self support has kept up well and holds out promise of an increase for next year. Tithing has been emphasised along with trying to help the people to realize that giving is an essential part of growth and service.

There are several churches that have reached out into untouched villages. A new preaching place has been established in Zimunya at Derembwe and a church will be organized next month. On the Marange Circuit there are four preaching places other than the churches. These are being cared for by the minister and the local preachers.

Large numbers of people are moving into the Zimunya and Marange Reserves from the surrounding farms. These Reserves in time will become very densely populated. The new irrigation furrows along with the new bridge and the drift over the Odzi River have opened up the territory in a wonderful way.

The village school work is gradually improving. The quality and organization are better than a few years ago. In March the Jeanes Teacher was transferred from the Marange Circuit to Zimunya Circuit. He has been a great help in building up a community spirit around the schools and in demonstrating the industrial work.

Umtali

The work in Umtali is different from any other work within our Conference. We are carrying on a very broad program and are attempting to administer to all the races within the town. As a result we are always facing many difficult problems that must be solved without prejudice to any and the greatest love for all. The work includes three distinct cultural and language groups. We cannot ignore these divisions in our efforts if for no other reason than that of culture and language.

Our first work in Umtali and Rhodesia in 1899 was among the European people in Umtali. These forty years of devoted and loyal service are bearing fruit. There is an increasing number of Europeans, in responsible positions scattered all over Rhodesia who came to Christ as a result of the work of St. Andrew's Church. The Church has 116 members. Two hundred and ninety two children have been baptised during the history of the church. There are one hundred children in the Sunday School. The six Scripture classes taught by the pastor in the Government schools number ninety five children. There are fifteen women in the Ladies League that meets once a month and serves as a very efficient social committee for the church. The church provides a wholesome social life for a large number of young people. Plans are now being made to secure the funds for erecting the greatly needed Sunday School rooms. The Church raised for local support during the year £143-4-8 and the Sunday School offering amounted to over thirty-one pounds.

Since 1931 we have had a church for the people of the coloured race. This was cared for by the pastor in connection with St. Andrew's Church. We have hoped and prayed for years that the way might open up to secure a pastor for these most needy people. Our prayer has been answered and we are most happy that our church in India has sent us its first missionaries for this work. This will make it possible to reach the large Indian group in Umtali and the surrounding territory. Mr. and Mrs. Christian have been well received and we are just now getting the work organized in the two communities. The combined work is organized with the existing coloured church and administers to the two groups both separately and together. At present the following activities are being carried on:

There are meetings being held in the Gujurati language for the Indian people. Two Gujurati language classes a week are being taught at the Coloured school. The Indian Association secured the approval of the Education Department for these classes. There are more than twenty children attending. A weekly Scripture class is taught in the school with forty Indian and coloured children attending. A Sunday School of thirty children has been organized in the plots (a section of the town where the coloured people live). Thirty-five attended a morning church service last Sunday held in that same section. Next month it is expected that we organize a Women's Association for the Coloured people.

A large room in the school building has been put at the disposal of our Indian Missionaries. Along with St. Andrew's Church building there is room for all the present activities.

Our native work has a very unique place in the affairs of Umtali. We are not all aware of the increasing importance of the work of the Native Girls' Hostel. It serves the entire Conference in helping, instructing, guiding and housing the girls and women who come to town. The work of the Hostel is difficult and everything does not work out as expected. To be thrilled with the work of the Hostel one must know the town conditions and the needs of the girls and women who live there. Miss Parmenter writes, "The home visitation and location work were hindered for about four months due to the quarantine for small-pox. Now that we have a Jeanes Home Demonstrator I do not go to the Location for health instruction although many come to the Hostel for instruction and advice about feeding babies. Class meetings, Wayfarers and Sunbeams have been carried on regularly each week throughout the year.

During the year 672 transients have stayed at the Hostel over a period of 781 nights. Nineteen girls have lived in the Hostel during the year and twenty five have been placed

in employment. There have been more than fifty requests for girls that could not be filled.

I believe that the public is awake to the value of the Hostel and on the whole I find them very willing to cooperate and look after the wellbeing of the girls."

Our Native Church in Umtali is passing through an epoch making time. As to the past year the Pastor writes: "The congregation of the Umtali church is a very inspiring one. Its growth is like a tree planted by the river side. Every Sunday nearly five hundred people attend the services. Umtali town is the center of the Umtali District. Our people from the village churches are coming here in large numbers for work. We have the largest church in town.

Besides the services in the church there are thirteen preaching places in and about Umtali. Eighteen Local Preachers take their turns in helping me conduct these services. Each week there are eleven class meetings conducted by faithful leaders. There are three Sunday Schools held each Sunday with two hundred and fifty one children attending.

There are two hundred and eighty three children in our day school. This year we had to turn back a large number of children because there was not enough room nor teachers to care for them. We must have six teachers instead of four. We are looking ahead to the near future when we hope to have more teachers and a new building. There is a Pathfinder Troop of twenty-six boys that was recently organized within the school. There are thirty-six in the Wayfarer detachment and forty-two girls are attending the Sunbeams.

The Rukwadzana Rhwe Wadzimayi is doing fine work. They are holding evangelistic meetings and many are being converted. Last June a man stood up at the close of a Sunday Service and gave his testimony saying that, 'The Rukwadzana led me to repentance. They helped me when I was sick. The friends that I used to drink with did not care anything about me when I was sick.'

The special week of services at Easter time this year greatly strengthened our people. The services helped to break down the evil influence that had been working among our boys and girls. After these services we formed a class for the boys from Gazaland who were converted during the meetings.

My prayer always is, "let thy will be done among our people."

For the past twenty years or longer Umtali has been talking about a new building. The need for such has been presented in the District reports from year to year. At last we are on the verge of realizing that hope. The Municipality has granted a site of five acres in the Location. The Board of

Foreign Missions has secured a large grant from the Miller Memorial Fund and a loan to complete the building. The church has already raised over seventy pounds and will no doubt raise more than 130 pounds before the building is finished. We hope to get in the foundations of the minister's house and the church building before the rains start. We hope to designate a fitting memorial in the new building either in the form of windows or the tower to the late Rev. E. H. Greeley. The new church will be known as the Miller Memorial church.

SUMMARY

Evidence of Health and Growth

1. There is an increasing number of people who are being converted from heathenism.
2. There are a large number of new preaching places and church organizations that are coming into being.
3. The schools are rapidly increasing in size and quality of work.
4. The churches are erecting better and more permanent buildings.
5. There is an increase in the request from laymen for Local Preachers and Exhorters licences.
6. The forward look is most inspiring. The past has been good but we do not want to return to it. We seek to build upon it a more glorious and useful future in the establishing of Christ's Kingdom in the hearts of the people.

OPPORTUNITIES

Umtali

- a. St. Andrew's Church is anxious to increase the efficiency and equipment of every department of the Church. A new effort is now being put forward for a better self support.
- b. In the Indian and Coloured work the open door is at hand and God has sent us the pastor and his wife to enter that door. We are at the door step. As a Conference we must do everything possible to enter.
- c. Our Native Church, which is the largest in town is on the verge of a new spiritual and material development. We thank God that he has so wonderfully undertaken for us.

Zimunya and Marange Reserves

With the increasing population due to the shifting of the people from the farms, we have a challenging opportunity. At least five new churches and schools should be organized next year. Also, a large Native Purchase Area is being opened up. This joins onto Zimunya. We opened two schools in the area last year. There should be one more.

The greatest opportunity is the crying need of all the people for salvation and God. This applies to all races. A word may turn many to the Lord. We work with people that God has created for Himself and they are unhappy without Him. For the future we have the same faith that has been our past experience:

“The best of all, God is with us.”

(b). REPORTS OF STANDING COMMITTEES AND BOARDS

Board of Education

1. We recommend that before dismissing a pupil from school, if possible, the parent or guardian be called, or failing that, information as to cause of dismissal be sent to them.

2. We recommend that the Teacher Training Department of Old Umtali be asked to continue the short course of school methods for at least another year.

3. We recommend that a committee consisting of Mrs. Taylor, Mr. J. Nduna and Miss J. Pfaff be requested to revise the scheme of work prepared by Mr. Adkins for kraal schools, and that the Committee on Publication be requested to have it printed after its revision.

4. We recommend that annual examinations for promotion be given in village schools for all students below Std. 1, and that those in Std. I or above be examined at the nearest Boarding School, or that an examination be arranged within the Circuit at which sealed examination papers from the Training School be used.

5. We recommend that Mrs. Taylor be asked to prepare a Vernacular Reader of an informative type containing material on History, Geography, and Civics, which will be suitable for Std. 4 and above; and that when approved it be printed by the Publication Committee.

Secretary—Clifford Faku.

Board of Home Missions and Church Extension

In accordance with the recommendation of last year, the Mutambara and Old Umtali Missionary Societies met and now bring to the Conference the following Constitution for a Missionary Society:

1. **Name:** The Name shall be “The African Missionary Society of the Methodist Episcopal Church in Rhodesia”.

2. **Aim:** The aim shall be to spread the Gospel of our Lord Jesus Christ.

3. **Officers:** There shall be three general officers, approved by the Annual Conference; three District Officers and three local church officers. These shall be elected or re-elected annually.

4. **Executive Committee:** The Executive Committee shall be composed of the three general officers and each District Society President.

5. **Annual Meeting:** The Annual Meeting shall be held at the time of the Meeting of the Native Christian Convention.

(a). Each Pastoral charge shall have the right to send a delegate to the Annual Meeting.

(b). The Delegate shall be a member in good standing of the Methodist Episcopal Church.

6. **Treasurer:** The general Treasurer shall give the report of the receipts and expenditures for the year to the Annual Meeting and to the Rhodesia Annual Conference. The books and accounts of the Treasurer shall be audited by the Auditing Committee of the Conference.

7. **Subscriptions:** The annual subscription shall be a voluntary offering. These shall be collected by the local societies and forwarded to the General Treasurer.

8. **Power of the Executive:** (a) The Executive Committee shall have power to make appropriations of funds to the projects which they approve.

(b). To authorize the Treasurer to make payments in accordance with the appropriations.

The following Officers for next year are nominated :

Chairman— J. M. Chimbadzwa

Secretary— John Nduna

Treasurer— Amos Kapenzi

* * *

Secretary of the Board of Home Missions and Church Extension—Lewis Tsododo.

Medical Committee

1. We urge our Native Ministers, Teachers and Christian people to constantly keep the need of helping to support the orphans at the missions, before the people so that the fathers or relatives will know and be willing to share in the expense.

2. We suggest that the Rukwadzana rhwe Wadzimai, in each district take up some special work to help with the work of the orphans such as, special collections, sewing, garden products etc.

3. We recommend that the male medical workers be placed on the roll with Accepted Supply Pastors, with the same regulations in regards to savings and retirement pension.

4. We recommend that the nurses at the Missions have the classes in Health and hygiene for the village women, as those who attended last year found them very helpful.

5. We urge that greater stress be laid on the teaching and practice of Sanitation, both in the Missions and village schools, as a step toward better Public Health.

Ona Parmenter—Secretary

Board of Ministerial Training.

The Board recommends that a Ministers Institute be held at Old Umtali for a period not exceeding two weeks, the time and arrangements for same to be determined in open Conference. And that Mr. Murphree be asked to organize the course with whatever help he wishes to call upon from other missionaries. We suggest that the course might well include the following :

The Work of a Circuit Minister,
A Bible course,
The Larger Methodist Catechism, or a course
in doctrine.

T. A. O'Farrell—Registrar

Committee on Resolutions

We of the Rhodesia Annual Conference, once again, wish to express our sincere pleasure at having Bishop and Mrs. Springer with us for this, their third Conference session.

We thank God for the friendship and interest of the Bishop as well as for his leadership. May the Lord sustain and guide him in all the work that is before him.

We appreciate the planning and organizing of the three days of Retreat which preceded this Conference. We feel that it was time well spent and contributed greatly to the spiritual life and success of the whole Conference. We hope that all future sessions will be on the same high spiritual note.

The long felt need of some one to administer the joys of salvation to the large Indian population in Rhodesia has been realized in the coming of Mr. and Mrs. Christian, the first missionaries from our church in India, to the Indian people of Umtali and surrounding districts. We welcome them with a heart felt welcome and give them the pledge of our faith and prayers.

A delightful present arrived at Old Umtali during Christmas week in the person of Sister Rosa Rydell of Sweden. She has quickly adjusted herself to conditions here and we wonder now how the medical work of the Institution was carried on with only one nurse. During this present Conference we have been glad to welcome to our missionary group

Miss Edith Parks from America. We trust for both of these new workers much happiness in serving their Master in this field to which He has called them.

The Conference extends a hearty welcome to Misses Quinton, Reitz and Gugin who have returned from furlough during the past year. We also rejoice in the arrival of Rev. and Mrs. R. C. Gates and family, who have returned from furlough during this Conference session.

One by one our young people take their flight from missionary homes to study in America. This year Mary Elma Roberts passed the matriculations examination in the Umtali school and is now studying at Iowa State University.

We extend a hearty welcome to Rev. David Mandisodza who received his appointment last year after a three years' leave of absence.

We regret the absence of Rev. Jonah Chitombo on account of illness. We hope and pray for his quick recovery.

Mutambara Mission is blessed in being able to secure the aid of Mrs. Wratten who assists in the industrial department and of Mr. and Mrs. de Bruijn who are caring for the boys' boarding department and assisting in industrial and church work during the absence of Mr. and Mrs. Roberts. We greatly appreciate their fine cooperation.

As always when Conference has met at Old Umtali, everything one could wish has been done for our comfort and pleasure and we are grateful to the entire staff for their kindness and hospitality. We also appreciate very much the musical treat which St. Andrews' orchestra gave us and the fact that they made the trip out from town for our entertainment.

S. King—Secretary

Board of Stewards

1. In order to get a full representation of laymen to Annual Conference we recommend that each church or station raise an amount sufficient for its share of the cost of lay delegates.
2. We recommend that each District Superintendent apportion to each church under his charge its share of the amounts ordered by the Conference for retired preachers. It is essential that these funds be raised and, hence, no effort should be spared to accomplish it.
3. We recommend that we continue the amount for General Conference expenses as $\frac{2}{6}$ for each church.

Titus Maranke—Secretary

Committee on the State of the Church

Of the resolutions sent to the Committee from the Native Christian Convention, Number 3 was referred to the Board of Education.

Number 4 was not acted upon as the powers asked are already available.

The remaining Resolutions are presented to the Conference with the sanction of the Committee, as follows :

Number 1. That in order to influence our Chiefs to become Christians, the ministers, pastor-teachers, and leaders of the Church should once in a while pay visits to non-Christian Chiefs and show love and respect to them, that the Christian influence may be born in them.

Number 2. That the Christian Convention is of the opinion that there is still a great lack of appreciation of the benefits of Church and school on the part of our people. Therefore we urge the whole of our Christian communities in all stations to be diligent in arousing the people to properly support these institutions.

Number 5. We, members of the Christian Convention move a vote of thanks to the Government for placing Demonstrators to improve the crops, home demonstrators to improve the homes, and dispensaries for our sick people. May this spread to all districts in Southern Rhodesia.

Since there is evidence of failure to keep accurate records of membership, the attention of all those concerned is drawn to the provisions of the Discipline of 1936, paragraph 387, with special note of section 3.

The following Constitution for the Rukwadzana rhwe Wadzimayi rwe Methodist Episcopal Church is presented :

Proposed Constitution of the

RUKWADZANA RHWE WADZIMAYI RWE METHODIST EPISCOPAL CHURCH.

Name: The name of the society shall be The Rukwadzana rhwe Wadzimayi rwe Methodist Episcopal Church. (By Conference action 1935)

Purpose: The purpose of the society shall be to promote the financial, social, and spiritual interests of the Church. (Par. 1061, Discipline.) and to "teach the aged women likewise, that they may be in behavior as becometh holiness, not false accusers, not given to much wine, teachers of good thing; that they teach the young women to be sober, to love their husbands, to love their children, to be discreet, chaste,

keepers at home, good, obedient to their husbands, that the word of God be not blasphemed." Titus 2: 3-5.

Membership: Women who are probationary or full members, in good standing, of the Methodist Episcopal Church may become members of the R. R. W.

Beginners in the Church may become Associate Members, but have no vote.

Local Organization: Societies may be organized in the local churches, under the control of the Quarterly Conference, and reporting to it. (Discipline, paragraph 1061) The leader will usually be the Pastor-teacher's wife but in some cases may be some other woman in the church.

Circuit Organization: The circuit activities shall be organized under the direction of the Quarterly Conference, and the Minister's wife will usually be the leader, but some other member may be. There shall be a time at the Quarterly Conference for the reception of members and the presentation of Badges.

District Organization: Each District shall provide its own organization, under the direction of the District Superintendent or some one appointed by him.

Sectional Organization: The North country and the South country shall each have an Executive Committee composed of all the wives of ministers of each circuit, another woman from each circuit and three Ministers (Native) from the section.

Conference Organization: There shall be two Conference Secretaries, one representing each section, elected by the Conference, to co-ordinate the activities of the two sections, to promote the arrangements for the DAY OF PRAYER, and any other activities that may be undertaken.

Relationship To The Conference: The relationship of the R. R. W. to the Annual Conference shall be similar to that of the Native Christian Convention, with two missionary advisors, elected by the Conference for each section.

Annual Convention: There may be a Convention held annually in the North country and in the South country under the direction of the Executive Committee of each section, along with the Native Minister of the entertaining circuit and the District Supt. in whose district the Convention is held. The Convention for the South shall be held the week end of the first Sunday in August, and the one in the North two weeks later.

One delegate from each District may be sent from each section to the Annual Convention of the other Section, each section being responsible for the expenses of its 3 delegates.

The Emblem: The official sign of the R. R. W. shall be a cloth badge in the form of a Maltese Cross, with the insignia of the clasped hands.

The Motto: The Motto shall be "For Christ and Others."

Patrick Machiri—Secretary

Report of the Board of Sunday Schools

It was recommended that suitable forms be printed for the use of all Sunday School Superintendents in asking for the correct number of lesson papers for their schools.

It was recommended that Daily Vacation Bible Schools be conducted for two or three weeks in the year wherever possible.

We recommend that Scripture memorizing be stressed and a system of rewards to encourage it worked out.

It was recommended that the fourth Sunday in August be set aside as Sunday School Day when the Sunday School period and the hour of morning service shall be given over to a program by the Sunday School.

Ministers, teachers, and laymen are urged to continue to seek places, such as hospitals, jails, road camps, etc. where used Sunday School lesson papers can profitably be distributed. Several reports from different ministers indicated that there are many people eager to receive these papers.

It was recommended that the Sunday School Evangelist, one missionary from each center, and a minister from each district compose the Sunday School Board.

We request the missionaries and ministers to visit and help guide the Sunday Schools and to speak more to the people in sermons etc. about Bible study.

It is recommended that Booth's book, "Serving God in the Sunday Schools", be made the text book for the Teacher Training Classes.

That the Missionary of the Board of Sunday Schools be requested to conduct such classes at each Center. And to assist the District Superintendent in the distribution of the Lesson Quarterlies to the Sunday Schools.

Sarah King—Secretary

(c) SPECIAL COMMITTEES

None

(d) CONFERENCE STATISTICIAN

See report following the last page.

(e) CONFERENCE TREASURER*Received during the year*

| | | | |
|--------------------------------------|-------------|----------|-----------|
| Native Helpers Savings | £98 | 5 | 3 |
| General Conference Expenses | 1 | 15 | 0 |
| Conference Claimants (from Churches) | 3 | 7 | 0½ |
| Home Missions | | 16 | 6 |
| Accepted Supply-Pastors Relief | 3 | 2 | 6 |
| | <u>£107</u> | <u>6</u> | <u>3½</u> |

Paid out during the year

| | | | |
|---------------------------------|-----|---|----|
| Native Helpers Savings returned | £60 | 1 | 10 |
|---------------------------------|-----|---|----|

Conference Assets

| | | | |
|--|--------------|----------|-----------|
| Invested in Govt. Loan Certificates | £1203 | 0 | 6 |
| Interest accrued on Native Helpers Savings | 123 | 17 | 2½ |
| Balance of Funds uninvested | 129 | 3 | 1½ |
| | <u>£1456</u> | <u>0</u> | <u>10</u> |

Conference Liabilities

| | | | | |
|------------------------------|--------------|----------|-----------|----|
| Accepted Supply-Pastors Fund | £ | 81 | 8 | 10 |
| Conference Claimants Fund | 595 | 10 | 4½ | |
| Home Missions Fund | 11 | 10 | 11 | |
| Caffray Evangelistic Fund | 3 | 11 | 6 | |
| General Conference Exp. Fund | 2 | 14 | 0 | |
| Native Helpers Savings Fund | 761 | 5 | 2½ | |
| | <u>£1456</u> | <u>0</u> | <u>10</u> | |

In addition to the above assets held within the Conference there is to the credit of this Conference with the Board of Pensions and Relief in the U. S. of America a Reserving Fund which on May 15, 1935 amounted to \$258.17 earning 3¾%.

Besides the above cash items there are World Service Vouchers as follows:

| | | |
|----------------------|----------------|----------------|
| For Work in Rhodesia | (Designated) | \$12.50 |
| For Work in Rhodesia | (Undesignated) | \$12.50 |
| | | <u>\$25.00</u> |

Conference Treasurer, H. I. James

(f) OTHER TREASURERS

None

(g) MISCELLANEOUS

The Tenth Native Christian Convention of the Methodist Episcopal Church was held at Mtoko, Mudzonga Station, June 28th to June 30th, 1938.

Chairman—Rev. I. V. Munjoma,
 Secretary—Rev. Amos P. Kapenzi,
 Missionary Advisory Members:—Rev. W. Bourgaize
 and Miss S. King.

The following are the resolutions to be sent to the Annual Conference of the Methodist Episcopal Church.

1. That in order to influence our Chiefs to become Christians, the ministers, pastor-teachers, leaders of the Church should once in a while pay visits to non-Christian Chiefs and show the love and respect to them that the Christian influence may be born in them.

2. That in the opinion of the Christian Convention we see the lack of regard of Church and school among our people. Therefore the Christian Convention requests the whole mass of our members in every station that more consideration be undertaken towards Church and school at each station, and that the Church leaders be empowered to explain to their people the blessings brought to them by the Church and school.

3. This Christian Convention of the Methodist Episcopal Church humbly request our Annual Conference that the Kral school children be given an official examination yearly.

4. We, members of the Christian Native Convention, move a vote of thanks to the Government for placing demonstrators to improve the crops, home demonstrators to improve homes, and the dispensaries for our sick people. May this spread to all districts in S. Rhodesia.

Officers for the ensuing year.

Chairman—Rev. Samuel Chieza
 Vice Chairman—Rev. C. Faku
 Secretary—Rev. A. P. Kapenzi
 Vice Secretary—Mr. M. Chiza

Other members:—Mr. Jonathan Chimbadzwa and Shadreck Nyemba.

Advisory Members:—

Miss Sarah King
 Rev. R. C. Gates

Part VII

MEMOIRS

Rev. E. H. Greeley D. D.

After almost fifty years of service in this continent Dr. E. H. Greeley, beloved friend of Africa, has entered the realm of the Eternal Day. "Baba" Greeley, as he was lovingly called by both black and white, began his career as a missionary in Liberia in 1888, serving there until recurrent fevers necessitated his leaving that unhealthy section in 1897. In 1900 he was appointed to Southern Rhodesia where he worked faithfully in various districts throughout the Conference until the time of his death in April of this year.

A lover of nature, "Baba" Greeley worked unceasingly beautifying, not only the campus at Old Umtali, but also the homes and mission grounds of other stations. We cannot think of him apart from the beauty of God's Out-of-Doors nor think of the glory of growing things apart from Him.

Literature plays a great part in the development of any people. In this realm Dr. Greeley made one of his greatest contributions, having provided the African people both inspiration and instruction through his writings. Doubtless the work for which he will be longest remembered is the Chimanika Hymnal. In the words of one of the older native ministers, "The Hymn book is a great memorial and undying heritage for the sons and daughters of Africa. Baba Greeley's physical absence is a great loss but we know that he is with us in spirit ministering to us through this work he has left with us."

Not only have many of our Christian people been blessed through Dr. Greeley's writings but also have great numbers come into a saving knowledge of Jesus Christ through the impact of his life and simple child-like faith. Dr. Greeley was retired in 1927 but he was never inactive, and the years of his retirement were years of sweetness and richness, making his life a blessing to old and young, black and white.

MRS. ROSSINA MALIYANGA

Rossina, the wife of Mr. Paul Maliyanga, was born at Munyanyanzi in 1902. She went to school at Mutambara and lived there three years. Later she came to Old Umtali and worked in Mr. Paisley's home. In 1920 she was married to Paul Maliyanga. They were united in marriage by Baba

Greeley and lived a peaceful and joyful life together for eighteen years. While she was serving the Lord at Mukahanana with her husband she became ill very suddenly and two days later, on October 23, 1937, passed into her Eternal Home.

Mrs. Maliyanga was a happy Christian. At the time of her death she was the leader of the Rukwadzano rwe Wadzi-mai. Her favourite hymn was "Pano Handi Musha Wangu."

We express our deep sympathy to those who sustain this great loss, especially her husband and the children and their close relatives.

"And I heard a voice from heaven saying unto me, Write, Blessed are the dead that die in the Lord from henceforth: Yea, saith the Spirit, that they may rest from their labours; and their works do follow them." Rev. 14:13.

CALEB MATONDO

In the death of Caleb Matondo which occurred yesterday, October 9th, the Umtali Native Church has lost one of its strong members. Mr. Matondo was a steward and local preacher. His influence for good was felt by both black and white.

We express our deep sympathy for his bereaved family.

Part VIII.
ROLL OF THE DEAD

(a) Members of Conference

"Blessed are the dead who die in the Lord."

| | Place of Birth | Entered Conf. | Years of Missionary Service | Died | Age | Place of Burial |
|------------------------|--------------------|---------------|-----------------------------|---------------|-----|---------------------|
| Buchwalter, Abraham L. | Fertility, Penn. | 1899 | 26 | Aug. 3, 1917 | 52 | Monrovia, Cal. |
| Gurney, Samuel | Long Branch, N. J. | 1887 | 21 | Aug. 3, 1924 | 64 | Salisbury, Rhodesia |
| Howard, Herbert N. | Harrisburg, Penn. | 1907 | 11 | Mar. 7, 1925 | 55 | Canandaigua, N. Y. |
| Greeley, Eddy H. | Owatonna, Minn. | 1907 | 50 | April 8, 1938 | 80 | Old Untali S. R. |

(b) Widows of Deceased Members; None**Wives of Members:**

Naomi Mparutsa, Wife of Moses Mparutsa, died February 12th, 1933.
 Emma Katsidzira, Wife of Murashwa Katsidzira, died May 3rd, 1933.
 Emily Faku, Wife of Clifford Faku, died March 1, 1934.

(c) Other Workers:

Miss Sadie Rexrode, W. F. M. S., age 38, died January 22, 1921, after three years service in S. Rhodesia; buried at Old Untali.
 Mr. Charles F. Taylor, age 67, missionary to China, died in the Untali Hospital, August 14, 1927, and was buried at Old Untali.
 Miss E. E. Bjorklund, age 63, Died November 19th, 1930. Her missionary service extended over a period of thirty - five years. She served in China and Japan from 1894 to 1900, in East Africa at Inhambane 1909 to 1915 and in Rhodesia at Old Untali 1915 to 1929. Buried at Old Untali.
 Miss Mildred O. Benson, age 42, died July 12th, 1937, a missionary of the W. F. M. S. She served in S. Rhodesia at Old Untali, 1926-1937. Buried at Old Untali.

Part IX

HISTORICAL

(a) Conference Sermons

| <i>Year</i> | <i>Preached by</i> | <i>Where</i> |
|-------------|------------------------|------------------------|
| 1916..... | H. I. James..... | Old Umtali Church |
| 1919..... | H. N. Howard..... | St. Andrew's Church |
| 1921..... | M. J. Murphree..... | Old Umtali Church |
| 1922..... | Samuel Gurney..... | Old Umtali Church |
| 1923..... | H. I. James..... | Old Umtali Church |
| 1924..... | Wilfred Bourgaize..... | Old Umtali Church |
| 1929..... | E. L. Sells..... | Old Umtali Church |
| 1931..... | Wilfred Bourgaize..... | Howard Memorial Church |
| 1932..... | J. Chimbadzwa..... | Old Umtali Church |

(b) Former Members and Probationers

| | | | |
|----------------------|----------------------|--------------------------|-----------|
| R. E. Beetham..... | 1901-1905 | Tizore Nevass..... | 1907-1913 |
| J. L. DeWitt..... | 1901-1905 | H. N. Howard..... | 1909-1924 |
| E. H. Richards..... | 1901-1913 | P. W. Keys..... | 1909-1915 |
| M. W. Ehnes..... | 1901-1905 | F. Conquer..... | 1909-1912 |
| J. M. Springer..... | 1901-1910; 1921-1924 | C. H. Runfeldt..... | 1909-1910 |
| R. Wodehouse..... | 1901-1910 | Muti Sikobele..... | 1909-1913 |
| F. D. Wolf..... | 1901-1907 | C. A. Kent..... | 1913-1916 |
| Samuel Gurney ... | 1902-1905; 1909-1924 | J. D. Pointer..... | 1912-1915 |
| J. A. Baldwin..... | 1903-1905 | J. G. Brass..... | 1921-1923 |
| J. H. Dimmit ... | 1903-1905 | L. E. Tull..... | 1921-1928 |
| D. A. Carson..... | 1908-1903 | F. G. Mauger..... | 1923-1932 |
| A. L. Buchwalter ... | 1905-1917 | R. F. Wagner..... | 1925-1934 |
| J. E. Ferris..... | 1905-1911 | J. R. Gates..... | 1907-1936 |
| S. D. Coffin..... | 1905-1913 | Murashwa Katsidzira..... | 1930-1936 |
| W. C. Terrill..... | 1907-1911 | Maxin Mutambanengwe..... | 1932-1936 |
| G. A. Stockdale..... | 1907-1913 | E. H. Greeley..... | 1907-1938 |

(c) Conference Sessions

EAST CENTRAL AFRICA MISSION CONFERENCE

| TIME | PLACE | BISHOP | SECRETARY |
|---------------------|----------------------------------|----------------------|--------------|
| 1901, Nov. 16 ... | { Umtali and ... } Old Umtali | ...Hartzell | ...Springer |
| 1903, Sept. 29. ... | Umtali | ...Hartzell | ...Beetham |
| 1905, May 26 ... | Umtali | ...Hartzell | ...Ferris |
| 1907, Mar. 13 ... | Umtali | ...Hartzell, Burt... | ...Ferris |
| 1907, Nov. 22 ... | Umtali | ...Hartzell | ...Ferris |
| 1909, July, 10 ... | Umtali | .. Hartzell | ...Greeley |
| 1910, Aug. 17 ... | Umtali | ...Hartzell | ...Greeley |
| 1911, June 7 ... | Umtali | ...Hartzell, Wilson | ...Gurney |
| 1912, Feb. 17 ... | Old Umtali | ..(Rev. J. R. Gates) | ...O'Farrell |
| 1913, Oct. 22 ... | Old Umtali .. | ...Hartzell | ...Greeley |

RHODESIA MISSION CONFERENCE

| | | | |
|-------------------|-------------------|-----------------------|------------|
| 1915, Jan. 20 ... | Old Umtali | ...Hartzell | ...Greeley |
| 1916, Feb. 16 ... | Old Umtali | .. (Rev. J. R. Gates) | ...Greeley |

| | | | |
|--------------------|------------|-------------|-----------------|
| 1917, May 3 ... | Old Umtali | ... Johnson | ... Greeley |
| 1917, Dec. 7 ... | Old Umtali | ... Johnson | ... J. R. Gates |
| 1919, Apr. 4 ... | Umtali | ... Johnson | ... Gurney |
| 1921, June 13 ... | Old Umtali | ... Johnson | ... James |
| 1922, June 14 ... | Old Umtali | ... Johnson | ... James |
| 1923, June 19 ... | Old Umtali | ... Johnson | ... James |
| 1924, Aug. 13 ... | Old Umtali | ... Shepard | ... James |
| 1925, June 23 ... | Old Umtali | ... Johnson | ... James |
| 1926, Nov. 4 ... | Nyadiri | ... Johnson | ... Wagner |
| 1927, June 14 ... | Old Umtali | ... Johnson | ... R. C. Gates |
| 1928, Sept. 10 ... | Old Umtali | ... Johnson | ... Murphree |
| 1929, July 3 ... | Old Umtali | ... Johnson | ... Murphree |
| 1930, July 9 ... | Mutambara | ... Johnson | ... Murphree |

RHODESIA ANNUAL CONFERENCE

| | | | |
|--------------------|------------|--------------|--------------|
| 1931, July 8 ... | Mrewa | ... Johnson | ... Murphree |
| 1932, Sept. 28 ... | Old Umtali | ... Johnson | ... Sells |
| 1933, June 14 ... | Old Umtali | ... Johnson | ... Sells |
| 1934, June 13 ... | Old Umtali | ... Johnson | ... Sells |
| 1935, July 9 ... | Old Umtali | ... Johnson | ... Sells |
| 1936, Dec. 9 ... | Old Umtali | ... Springer | ... Adkins |
| 1937, Oct. 6 ... | Nyadiri | ... Springer | ... Sells |
| 1938, Oct. 5 ... | Old Umtali | ... Springer | ... Sells |

(d) General

Delegates to the General Conference

1932

Ministerial

T. A. O'Farrell; Reserve— H. I. James

Lay

Miss Ruth E. Hanson; Reserve— Miss Oril Penney

1936

Ministerial

H. I. James; Reserve— E. L. Sells

Lay

Miss Sarah N. King; Reserve— Mrs. H. I. James

Missionaries 1898—1938

List of Missionaries sent to the Rhodesia Work by the Board of Foreign Missions and the W. F. M. S. beginning with the opening of the work in 1898, with year of entering and leaving the work.

| | | | |
|---------------------|-------------|------------------------|-------------|
| Rev. M. W. Ehnes | 1898-1901 | { Mrs. H. F. Rasmussen | { 1901— |
| Mrs. M. W. Ehnes | 1898-1901 | | |
| Rev. J. L. DeWitt | 1899-1901 | | { 1921-1924 |
| Mrs. J. L. DeWitt | 1899-1901 | Miss H. E. Johnson | 1901-1904 |
| Mrs. Anna Arndt | 1899-1902 | Rev. R. E. Beetham | 1901-1904 |
| Mr. Herman Heinkle | 1899-1903 | Mr. G. M. Odum | 1901-1902 |
| Dr. Hammett | 1899-1899 | Rev. Samuel Gurney | { 1903-1905 |
| Miss Culver | 1899-1899 | | { 1909-1924 |
| Rev. E. H. Greeley | 1900-1938 | Mrs. S. Gurney | 1902-1902 |
| Rev. R. Wodehouse | 1901-1910 | Mr. D. A. Carson | 1902-1903 |
| Mrs. R. Wodehouse | 1901-1910 | Mrs. D. A. Carson | 1902-1903 |
| Rev. J. M. Springer | { 1901-1906 | Rev. J. H. Dimmit | 1903-1903 |
| | { 1921-1924 | Rev. G. A. Baldwin | 1903-1904 |

| | | | |
|-----------------------------|-------------|------------------------------|-------------|
| Rev. J. E. Ferris | 1904-1909 | Rev. M. J. Murphree | 1920- |
| Mrs. J. E. Ferris | 1904-1909 | Mrs. M. J. Murphree | 1920- |
| Rev. S. D. Coffin | 1905-1911 | Miss M. Fuller | 1921-1931 |
| { Miss Swornstedt | { 1905— | Rev. A. DeJacoby | 1921-1921 |
| { Mrs S. D. Coffin | { 1907-1911 | Mrs. A. DeJacoby | 1921-1921 |
| Mr. E. L. Sechrist | 1906-1909 | Rev. W. Bourgaize | 1921- |
| Mrs. E. L. Sechrist | 1906-1909 | Rev. L. E. Tull | 1921-1927 |
| Rev. J. R. Gates | { 1906-1919 | Mr. W. C. Gardner | 1921-1925 |
| | { 1916-1932 | Mrs. W. C. Gardner | 1921-1924 |
| { Miss H. L. Lodge | { 1907— | Miss G. Beven | 1922-1927 |
| { Mrs J. R. Gates | { 1908-1914 | Miss B. Reitz | 1922- |
| | { 1916-1932 | Rev. R. C. Gates | 1922- |
| Miss E. M. Bell..... | 1907-1911 | Mrs. R. C. Gates | 1922- |
| Miss S. Coffin | 1907-1912 | Miss A. Moore..... | 1922-1927 |
| Rev. G. A. Roberts | 1907- | Rev. J. G. Brass | 1922-1923 |
| Rev. A. L. Buchwalter..... | 1909-1915 | Mrs. J. G. Brass..... | 1922-1923 |
| Mrs. A. L. Buchwalter | 1909-1915 | Rev. F. G. Mauger | 1923-1930 |
| Rev. H. N. Howard | 1909-1920 | Mrs. F. G. Mauger | 1923-1930 |
| Mrs. H. N. Howard..... | 1909-1920 | Miss Ethel McMann | 1923-1931 |
| Miss E. D. Nourse | 1909-1921 | Miss Sarah King | 1923- |
| Miss P. Mullikin | 1909- | Miss B. Ramsey | 1924-1937 |
| Rev. T. A. O'Farrell..... | 1910- | Rev. R. F. Wagner | { 1924-1927 |
| Mrs. T. A. O'Farrell | 1910~ | | { 1929-1934 |
| { Miss B. Fowles | { 1910— | Miss J. G. Woodruff | 1925-1930 |
| { Mrs. G. A. Roberts | { 1912- | Miss Ila Scovill..... | 1925- |
| { Miss R. N. Goddard | { 1912— | Dr. S. R. P. Montgomery | 1925-1927 |
| { Mrs. J. G. Paisley | { 1915-1921 | Mrs. S. R. P. Montgomery | 1925-1927 |
| Miss G. Clark | 1912- | Miss Oril Penney | 1926- |
| Rev. C. A. Kent | 1912-1915 | Miss Ruth E. Hansson | 1926- |
| Mrs. C. A. Kent | 1912-1915 | Miss Mildred O. Benson | 1926-1937 |
| Rev. H. I. James | 1913- | Rev. E. L. Sells | 1929- |
| Mrs. H. I. James | 1913- | Mrs. E. L. Sells | 1929- |
| Miss E. E. Bjorklund | 1915-1930 | Mrs. R. F. Wagner | 1929-1934 |
| Miss E. A. Hess..... | 1915-1932 | Miss Jessie Pfaff | 1929- |
| Miss F. Quinton | 1917- | Miss Wilhelmina Shields | 1930-1937 |
| Miss S. Rexrode | 1918-1921 | Miss Alice Whitney | 1931- |
| Miss L. Tubbs | { 1918-1923 | Miss Irene Gugin | 1931- |
| | { 1926- | Rev. L. E. Adkins..... | 1933-1937 |
| Rev. H. E. Taylor..... | 1919- | Mrs. L. E. Adkins | 1933-1937 |
| Mrs. H. E. Taylor..... | 1919- | Miss Rosa Rydell..... | 1937- |
| Miss O. Parmenter | 1920- | Miss Edith Parks..... | 1938- |

The following additional workers were employed on the field:

Rev. M. H. Reid, 1898; Mrs. R. St. Tulloch, 1902; Mr. M. B. Spears 1905; Mrs. H. Brown, 1903; Miss M. Brown, 1903; Miss Cuif, 1903; Mrs. T. Stratton, 1905; Miss E. Bennett, 1905; Rev. C. H. Beagley, 1906; Mr. W. H. Robson, 1906; Miss A. F. Gray, 1906; Rev. G. A. Stockdale, 1907; Mr. and Mrs. W. Garner, 1907; Miss Bleggard, 1907; Mr. and Mrs. C. S. Till, 1910; Mrs. L. Carson, 1911; Mr. R. Mackenzie, 1912; Rev. and Mrs. R. B. Wallace, 1913; Mr. J. G. Paisley, 1912; Rev. William Garner, 1912; Mr. and Mrs. William Hodgson, 1917; Mr. and Mrs. S. C. Searle, 1918-1921; Mr. C. S. Till, 1920; B. J. E. Pretorius, 1924; Mr. G. Pretorius, 1925-1930; Miss J. McMorran 1928-1930; Mrs. Uys, 1930-1933; Miss Louise Forrest 1935-1936; Miss Jean Loze, 1936-1938; Miss Lois Pfaff 1936-1938; Mr. and Mrs. Carl Huie, 1936-1938; Miss Lois Jessop 1937-1938; Miss Fannie Ellener 1937-1938; Mrs. Irene Wratten 1938; Mr. and Mrs. P. F. De Brujn, 1938.

Part X

(a) MISCELLANEOUS

Plan of Conference Examinations

For Europeans as per 1936 Discipline Paragraph. 545

Undergraduates may sit for examinations at the seat of the Finance Committee meetings as well as at the seat of the Conference.

| Year | Study No. | Examiner |
|--------------------|-------------|-----------------|
| Admission on Trial | 1, | M. J. Murphree |
| | 2, | E. L. Sells |
| | 3, | R. C. Gates |
| | 4, | W. Bourgaize |
| | 5, | H. I. James |
| | 6, | M. J. Murphree |
| First Year | 1, | E. L. Sells |
| | 2, | W. Bourgaize |
| | 3, | H. I. James |
| | 4, | M. J. Murphree |
| | 5, | R. C. Gates |
| | Reading | } |
| | 1, 4, | |
| 2, 5, | | |
| 3, 6, | R. C. Gates | |
| Second Year | 1, | W. Bourgaize |
| | 2, | H. I. James |
| | 3, | M. J. Murphree |
| | 4, | R. C. Gates |
| | Reading | } |
| | 1, 5, | |
| | 2, 6, | |
| 3, 7, | | |
| 4, | R. C. Gates | |
| Third Year | 1, | H. I. James |
| | 2, | W. Bourgaize |
| | 3, | E. L. Sells |
| | 4, | R. C. Gates |
| | 5, | T. A. O'Farrell |
| | Reading | } |
| | 1, 4, | |
| 2, 5, | | |
| 3, 6, | R. C. Gates | |
| Fourth Year | 1, | W. Bourgaize |
| | 2, | E. L. Sells |
| | 3, | R. C. Gates |
| | 4, | H. I. James |
| | Reading | } |
| | 1, 4, | |
| | 2, 5, | |
| 3, 6, 7, | R. C. Gates | |

Courses of Study for the Rhodesia Annual Conference

TRAVELLING MINISTRY

FOR ADMISSION ON TRIAL

EXAMINATION.

Examiner

- | | |
|--|-------------------|
| 1. Discipline: Articles of Religion. | E. L. Sells |
| 2. South African History. | J. Chimbadzwa |
| 3. Life of Wesley - <i>Telford or Winchester</i> . | M. J. Murphree |
| 4. The Moffats - <i>Hubbard</i> . | C. Faku |
| 5. Bible Biographies: | |
| a. Life of Christ - St. Mark. | } T. A. O'Farrell |
| b. Life of Paul - Acts | |
| c. Life of Moses - Exodus. | |
| 6. Written Sermon. | R. C. Gates |

FIRST YEAR.

EXAMINATION.

- | | |
|--|---------------|
| 1. Discipline. Parts I to VI. | E. L. Sells |
| 2. History of Methodism - <i>Faulkner</i> . | W. Bourgaize |
| 3. Plain Account of Christian Perfection - <i>Wesley</i> . | C. Faku |
| 4. Translation to Vernacular, Articles of Religion. | J. Chimbadzwa |

COLLATERAL READING:

- | | |
|--|---------------|
| 1. Pilgrim's Progress - <i>Bunyan</i> . | } R. C. Gates |
| 2. David Livingstone - <i>J. J. Ellis</i> | |
| 3. The Making of the Bible - <i>Vernon</i> . | |

SECOND YEAR.

EXAMINATION

- | | |
|--|-----------------|
| 1. Primer of Homiletics - <i>Edwards</i> . | E. L. Sells |
| 2. A People's Life of Christ - <i>Smyth</i> . | W. Bourgaize |
| 3. Primer of Christian Doctrine - <i>Terry</i> . | C. Faku |
| 4. Outline: Genesis, Exodus, Acts, and Romans. | T. A. O'Farrell |

COLLATERAL READING:

- | | |
|---|---------------|
| 1. The Tongue of Fire - <i>Arthur</i> | } R. C. Gates |
| 2. Life of Khama. | |
| 3. Selections from the Writings of John Wesley - <i>Welch</i> . | |

THIRD YEAR

EXAMINATION.

Examiner

- | | |
|---|-----------------|
| 1. History of the Christian Church - <i>Grant</i> . | J. Chimbadzwa |
| 2. Shorter Manual of Theology - <i>Beet</i> . | W. Bourgaize |
| 3. The Moslem World - <i>Zwemer</i> . | C. Faku |
| 4. Life and Times of Jesus - <i>Grant</i> . | T. A. O'Farrell |

COLLATERAL READING :

- | | | |
|--|---|-------------|
| 1. The Soul-Winner's Secret - <i>Brengle</i> . | } | R. C. Gates |
| 2. Christian Baptism - <i>Merrill</i> . | | |
| 3. Heart of Asbury's Journal - <i>Tipple</i> . | | |

FOURTH YEAR

EXAMINATION.

EXAMINER.

- | | |
|--|-----------------|
| 1. New Testament History - <i>Maclean</i> . | E. L. Sells |
| 2. Lives of Eminent Africans - <i>Gollock</i> . | W. Bourgaize |
| 3. Faith of a Christian - <i>Sketchley</i> . | M. J. Murphree |
| 4. The Worker and His Bible - <i>Eiselen and Barclay</i> . | T. A. O'Farrell |

COLLATERAL READING

- | | | |
|--|---|-------------|
| 1. a. Preacher and Prayer - <i>Bounds</i> . | } | R. C. Gates |
| b. Purity of Heart - <i>General Booth</i> | | |
| 2. The Indwelling Spirit - <i>Davidson</i> . | | |
| 3. a. Roman Catholic Doctrine Examined.— <i>Brooks</i> | | |
| b. "Should Christians Keep the Sabbath." <i>Torrey</i> . | | |

Substitutes

1. The Bible - *Dods* 2. Digest of Methodist Law - *Merrill*; 3. Life of Paul - *Stalker*; 4. Bible History - *Blaikei*; 5. The Peacher, His Life and Work - *Jowett*; 6. Manual of Christian Doctrine - *Banks* 7. The Land of Israel - *Stewart*; 8. 100. Questions on Methodism *Wheeler*
 9. How to Study the Bible - *Clifford Moule*: 10. The Christian Faith - *Curtis*: 11. Short History of the Christian Church - *Hurst*; 12. Twenty-five Articles - *Wheeler* 13. Public Worship - *Hoyt*: 14. Life of Luther - *McGiffert*: 15. Christianity in Doctrine and Experience - *Buck*: 16. Religious Education in the Home - *Folson*; 17. Short Chapters of African History - *Wheatherhead* 18. Islam and Africa - *Dale*.
 (50 Books in all)

Local Preacher's Course

FIRST YEAR

1. To be able to write :
 - a. His name
 - b. His Circuit and Church
 - c. The name of his Minister
 - d. The name of the Superintendent
 - e. Date, month and year
2. To read a chapter of the New Testament fluently in five minutes or less
3. Commit to memory the Beatitudes
4. Study one of the Gospels
5. Study the Parables and Miracles of Jesus
6. Learn the story of Abraham, Joseph and Moses
7. Attend a lecture given on the Life of John Wesley

(b) CONFERENCE RULES OF ORDER

None

(c) ACCEPTED SUPPLY PASTORS

Note.—Elders in Italics, Deacons in small capitals and the Licentiates in Roman.

Mrewa District

| | |
|---------------------|--------------------|
| William Chieza | Titus Kuture |
| Moses Chisamba | Lazarus Mahowa |
| Henry Chitiyo | Daniel Makuto |
| Silas Chitiyo | Joseph Makuto |
| Kenneth Choto | Dixon Matlyukira |
| Taylor Gotora | Phillip Muchaza |
| Peter Kanonuhwa | William Mudede |
| Phillip Kanonuhwa | James Mujeni |
| Eddy Kambarami | Obadiah Musingwini |
| Isaac Kambarami | Abraham Tsoka |
| Roderick Kunyarimwe | Abisha Tuhwe |
| Matthias Kurisa | Isaiah Tsopotsa |

Mtoko District

| | |
|----------------------|-----------------|
| Sydney Chidzwondo | Titus Mufunde |
| Enoch Chingwena | Paul Muranda |
| Isaiah Chingwena | Silas Musakwa |
| Samuel Kapito | Isaac Musiwa |
| Shadrach Karimanzira | Amos Muswairo |
| Michael Karonga | Elisha Mvududu |
| Timothy Mahachi | Jacob Nyamunda |
| Peter Mufunde | Shadrach Nyemba |
| | Samuel Tsomondo |

Mutambara District*Miss Lulu Tubbs*

| | |
|-------------------|-------------------|
| Jotham Chatema | Noah Mudaba |
| Hezekiah Kaserera | Wilson Mudzimwa |
| Thomas Kamusona | Josiah Munotumani |
| Edward Liya | Aaron Mupoda |
| Henry Mubango | Edison Mutasa |

Nyadiri District

| | |
|----------------------|-------------------|
| Nason Chigubo | Edward Makoni |
| Joseph Chipuriro | Josiah Mbutsa |
| Jackson Chinake | Wilson Mmanga |
| Timothy Chirimuminda | Josiah Mrewa |
| Gideon Darikwa | Samuel Munjoma |
| James Dzapasi | Noah Muswe |
| Philemon Gosha | Paul Mutizi |
| Gladman Jangano | Lazarus Samukange |
| Amos Kajese | Job Tsiga |
| Timothy Kambarami | Stephen Zambuko |
| Titus Katiyo | Ebson Zimonde |
| Eddy Makombore | |

Old Umtali District

| | |
|---------------------|----------------|
| Ashford Bepete | Samuel Manjoro |
| Timothy Chieza | Thomas Matara |
| Benjamin Gwaza | Samuel Matongo |
| Vincent Hamadziripi | Isaiah Musamba |
| Elias Jangano | Janje Rusero |
| Amos Karumbidza | Aaron Sitole |
| Leonard Kasambira | Philip Sitole |
| Paul Malianga | |

Umtali District

| | |
|--------------------|--------------------|
| Samuel Chikwaiti | Lionel Mupenswa |
| Daniel Chitenderu | Kenneth Murigwa |
| Shadrach Chitereka | MAXIN MUTAMBANE- |
| Job Gondora | NGWE |
| Samuel Gwarada | Joshua Mutsago |
| Benson Kapfumvuti | Abisha Ndidzano |
| Isaiah Kuwana | Martin Nyagura |
| Gibson Makaure | JOSEPH NYAMUROWA |
| Mark Matanga | Morrison Parwehosi |
| Paul Maviza | Johnson Sachiti |
| Towndie Mhlanga | Lionel Zimunya |

(d) THE RHODESIA LAY CONFERENCE

The Lay Conference convened at 2.30 p.m. on Wednesday at the seat of the Annual Conference in the Church at Old Umtali. Lewis Tsododo was re-elected as the President and Solomon Machingura was elected Secretary. The following Lay Delegates were present :

| | | |
|--------------------|------|------------------------|
| Solomon Machingura | from | Salisbury |
| Escrivao Anglazi | „ | Old Umtali |
| Lewis Tsododo | „ | Mutambara Mission |
| Miss Parmenter | „ | Umtali—St. Andrew's |
| Mrs. H. I. James | „ | Howard Memorial Church |
| Aaron Machiri | „ | Nyakatsapa |
| Amon Kajese | „ | Manyika Circuit |
| Gibson Ndowe | „ | Nyadiri |
| Shadreck Chitereka | „ | Zimunya Circuit |
| Isaiah Chingwena | „ | Mtoko |
| Silas Chitiyo | „ | Mangwende Circuit |
| Amos Makuto | „ | Mrewa Circuit |
| Elsie Ngonyama | „ | Gandanzara Circuit |
| Wilson Muzhizhizhi | „ | Mukahana Circuit |
| Daniel Makuto | „ | Headlands Circuit |
| Thomas Matara | „ | Odzi Circuit |
| James Chikuse | „ | Old Umtali Circuit |
| J. Nyoro | „ | Penhalonga |
| R. Muradzikwa | „ | Marange Circuit |
| Elisha Nemaconde | „ | Umtali |

The following Resolutions to the United Session were adopted:

1. When children are dismissed from school for wrong conduct a letter should be sent to the parents giving the reasons why the child was sent from school.

2. We request that the Churches and Circuits sending Lay Delegates to help with the expenses of their representatives.

3. In order that the local churches may be more willing to contribute to the Conference funds we request that more time be given in explaining to the people the use of these funds.

On Monday at 11.0 a.m. the Lay Conference took a vote for the election of the Delegate and Reserve Delegate to the Uniting Conference to be held next April. The vote was taken with Mrs. Taylor receiving 7 ballots, Miss Ila Scovill 4, Miss L. Tubbs 3 and Mrs. G. A. Roberts 2. Total ballots cast 16.

Mrs. Taylor having received the majority was declared elected, and Miss I. Scovill was declared the Reserve Delegate.

Secretary—Solomon Machingura.

(e) CONFERENCE AND MISSIONARY ROLL

Rhodesia Conference Roll

(Add to each address, S. Rhodesia, Africa)

**Year of
Reception
On Trial.**

| | | |
|------|---------------------|---------------------------|
| 1907 | H. I. James * | Mrewa |
| 1910 | T. A. O'Farrell * | P.B. 136 E. Salisbury |
| 1917 | M. J. Murphree * | Old Umtali |
| 1921 | G. A. Roberts * | (On furlough) |
| | W. Bourgaize * | Mtoko |
| | H. E. Taylor * | Old Umtali |
| | E. L. Sells * | Box 55, Umtali |
| | David Mandisodza | Mrewa |
| 1923 | R. C. Gates * | Old Umtali |
| | Thomas Marange | Box 55. Umtali |
| | Isaiah Munjoma | Mrewa |
| 1924 | Isaiah Darikwa | Box 333, Salisbury |
| | C. E. Faku | Old Umtali |
| | Benjamin Katsidzira | Odzi |
| | Titus Marange | Box 55, Umtali |
| 1925 | L. E. Adkins | Missionary in East Africa |
| | Reginald Ngonyama | Old Umtali |
| 1926 | Josiah Chimbadzwa | Old Umtali |
| | Zechariah Mukombiwa | Inyazura |
| 1927 | Philip Chieza | Odzi |
| | Samuel Chieza | Mtoko |
| 1928 | Amos Kapenzi | Old Umtali |
| | Moses Mparutsa | P. B. 136 E Salisbury |
| | John Nduna | Old Umtali |
| 1930 | Hosea Katsidzira | Headlands |
| | Patrick Machiri | Old Umtali |
| | Johnson Maramba | Penhalonga |
| | Enoch Munjoma | Mtoko |
| | Jackson Rugayo | Mutambara |
| 1932 | Obadiah Chimonyo | Old Umtali |
| | Silas Kasambira | Old Umtali |
| 1933 | Jonah Chitombo | P. B. 136 E Salisbury |
| | Jonah Machiri | Old Umtali |
| 1934 | Luke Chieza | Mrewa |

On Trial

| | | |
|------|-------------------|----------------------|
| 1937 | M. E. Persons. | Old Umtali |
| 1938 | P. B. Christian * | P. O. Box 55, Umtali |

Note—Asterisk after names of missionaries

Missionaries

[Add to each address, S. Rhodesia. Africa.]

| | |
|----------------------|------------------------|
| Miss Pearl Mullikin | Old Umtali |
| Mrs. T. A. O'Farrell | P. B. 136 E. Salisbury |
| Mrs. G. A. Roberts | (On furlough) |
| Mrs. H. I. James | Mrewa |
| Mrs. H. E. Taylor | Old Umtali |
| Mrs. M. J. Murphree | Old Umtali |
| Mrs. R. C. Gates | Old Umtali |
| Miss Ruth E. Hansson | Old Umtali |
| Mrs. E. L. Sells | Box 55, Umtali |
| Miss Rosa Rydell | Old Umtali |

Women's Foreign Missionary Society

| | |
|----------------------|------------------------------|
| Miss Grace Clark | (On furlough) |
| Miss Frances Quinton | Old Umtali |
| Miss Lulu Tubbs | Mutambara |
| Miss Ona Parmenter | Native Girls' Hostel, Umtali |
| Miss Beulah Reitz | P. B. 136 E, Salisbury |
| Miss Sarah King | P. B. 136 E, Salisbury |
| Miss Ila Scovill | (On furlough) |
| Miss Oril Penney | Mutambara |
| Miss Jessie Pfaff | Old Umtali |
| Miss Alice Whitney | P. B. 136 E, Salisbury |
| Miss Irene P. Gugin | Old Umtali |
| Miss Edith Parks | P. B. 136 E, Salisbury |

Other Workers

| | |
|---------------------|------------|
| Miss Jean Loze | Old Umtali |
| Miss Lois Pfaff | Old Umtali |
| Mr. Carl Huie | Old Umtali |
| Mrs. Carl Huie | Old Umtali |
| Miss Fannie Ellener | Mutambara |
| Miss Lois Jessop | Old Umtali |
| P. F. de Bruijn | Mutambara |
| Mrs. Irene Wratten | Mutambara |

Part XI

PASTORAL RECORD

This record includes only the appointments during membership in the Conferences, and not those as "supply."

In the case of missionaries, appointments before Conference membership on the field are included.

The figures () are the years of service spent in the Ministry of the Methodist Episcopal Conference.

The addresses are given in the Conference Roll and Directory.

1. FULL MEMBERS

Adkins, Lilburn E:—On trial Minnesota Conference 1925. Deacon 1925; Elder 1927; West Concord 1925-27; 1928-29 In School; Transferred to Southeast Africa Mission Conference 1930; 1930-33 Kamhini Central Training School; Transferred to Rhodesia Conference 1933; 1933-36 Marange, Odzi-Old Umtali and Mtasa Circuits. 1934-36 Gandanzara Circuit. 1937 On furlough; 1938 Missionary in East Africa. Minn. (5) So. E. A. (3) (5)

Bourgaize, Wilfred:—On trial Rhodesia Mission Conference 1921 (Deacon and Elder); 1921 Umtasa, Gandanzara and Headlands Circuits; 1922-25. Mtoko and Uzumba Circuits, 1925-26 Mtoko Circuit; 1927-28 Superintendent Mtoko District; 1929 On furlough; 1930-38 Superintendent, Mtoko District. (18)

Chieza, Luke:—On trial Rhodesia Conference 1934; Deacon 1936; Elder 1938; Evangelist Mrewa District 1936-38. (5)

Chieza, Philip:—On trial Rhodesia Mission Conference 1927; Deacon 1932; Elder 1936; 1927-29 Muziti; 1930-31 Chiduku Circuit; 1932 Odzi Circuit 1933-35 Odzi-Old Umtali Circuit. 1936-38 Odzi Circuit. (12)

Chieza, Samuel:—On trial Rhodesia Mission Conference 1927; Deacon 1930; Elder 1933; 1927-31 Mrewa; 1931-38 Mtoko. (12)

Chimbadzwa, Josiah:—On trial Rhodesia Mission Conference 1926; Deacon 1929; Elder 1930; 1926-30 Assistant, Theological School, Old Umtali; 1931-33 Assistant Pastor Old Umtali and teacher in Hartzell Training School; 1934-35 Assistant Pastor, Old Umtali. 1936-38 Pastor, Old Umtali. (13)

Chimonyo, Obadiah:—On trial Rhodesia Conference 1932; Deacon 1935; Elder 1936; 1932-34 in school; 1935—1938 Old Umtali Circuit. (7)

Chitombo, Jonah:—On Trial Rhodesia Conference 1933; Deacon 1935; 1933-35 In School; 1935—38 Nyadiri Circuit. (7)

Darikwa, Isalah:—On trial Rhodesia Mission Conference 1924; Deacon 1926; Elder 1930; 1924 Rupinda; 1925-32 Mtasa Circuit; 1932-36 Mrewa Circuit; 1937-1938 Salisbury. (15)

Faku, Cliford:—On trial Rhodesia Mission Conference 1924; Deacon 1926; Elder 1929; 1925 Old Umtali Circuit; 1925 Penhalonga; 1926-23 Assistant, Literary Department Old Umtali; 1929-31 Mtoko; 1931-33 Mrewa; 1934-38 Assistant, Literary Dept. Hartzell Training School. (15)

Gates, Robert C.:—On trial Rhodesia Mission Conference 1923; Deacon 1923; Elder 1927; 1923-27 Literary and Normal Department, Hartzell Training School; 1923 Old Umtali Circuit; 1924 Old Umtali Church; 1925 Old Umtali Church and Circuit; 1926 Mission Correspondent; 1927 Superintendent, Old Umtali District; 1928 On furlough; 1929-31 Superintendent, Old Umtali District and Principal Hartzell Training School; 1932 Superintendent Nyadiri District; 1933-35 Superintendent, Mrewa District; 1936 Superintendent, Umtali-Rusapi District, St. Andrews; 1937 On furlough; 1938 Hartzell Training School, Teacher Training Dept. (16)

James, Henry I.:—On trial West Wisconsin Conference 1907; Deacon 1910; Elder 1913; 1907 Birchwood; Transferred Wisconsin Conference 1908; 1908-09 Algoma; 1910-12 Oconto; Transferred, East Central Africa Mission Conference 1913; 1913-14 St. Paul's, Penhalonga; 1915 Principal Hartzell Training School; 1916-1919 Mission Treasurer; 1916 Bible Department and Mission Press; 1917-18 Principal Central Training School, Old Umtali Circuit; 1919 On furlough; 1920-22 Superintendent, Umtali District and St. Andrew's Church; 1920-24 Mission Treasurer and Correspondent; 1923-24 Superintendent Mrewa District; 1925-26 On furlough; 1927-28 Superintendent Mrewa District; 1929-31 Superintendent Umtali District and St. Andrew's Church; 1932-34 Superintendent Old Umtali District Principal Theological School, Pastor Old Umtali and Mission Press 1930-1934 Mission Treasurer and Correspondent; 1935 On furlough; 1936-38 Superintendent, Mrewa District. W. Wis. (1) Wis. (5) (27)

Kapenzi, Amos:—On trial Rhodesia Mission Conference 1928; Deacon 1930, Elder 1932; 1928-38 Assistant, Hartzell Training School (Literary Department.) (11)

Kasambira, Silas:—On trial Rhodesia Conference, 1932: Deacon 1934; Elder 1936; 1932-33 In school; 1934 Penhalonga; 1935-38 Gandanzara Circuit. (7)

Katsidzira, Benjamin:—On trial Rhodesia Mission Conference 1924; Deacon 1926; Elder 1930; 1924-25 Nyamukwarara; 1926 Gandanzara; 1927-31 Gandanzara Circuit; 1932-34 Mtasa Circuit; 1935-38 Marange Circuit. (15)

Katsidzira, Hosea:—On trial Rhodesia Mission Conference 1930; Deacon 1932; Elder 1934; 1930-31 in school; 1932-35 Mangwendi Circuit; 1935-36 Mangwendi and Headlands Circuits: 1937-1938 Headlands Circuit. (9)

Machiri, Jonah:—On trial Rhodesia Conference 1933; Deacon 1935, 1933-1935 In school; 1935-37 Evangelist, Old Umtali District; 1938 Mukahanana Circuit. (6)

Machiri, Patrick:—On trial Rhodesia Mission Conference 1930; Deacon 1932; Elder 1934; 1930-31 in school; 1932-33 Chiduku Circuit; 1934 Marange Circuit; 1935-38 Mtasa Circuit. (9)

Mandsodza, David:—On trial Rhodesia Mission Conference 1921; Deacon 1921; Elder 1929; 1921 Salisbury; 1922-29 Headlands Circuit. 1930-33 Umtali; 1934 Leave of absence; 1935 Supernumerary; 1936 Located; 1937-1938 Mangwendi Circuit. (16)

Maramba, Johnson:—On trial Rhodesia Mission Conference 1930; Deacon 1932; Elder 1936; 1930 Assistant, Hartzell Training School; 1931-33 Mukahanana Circuit; 1934 In school; 1935-36 Penhalonga; 1936-38 Penhalonga Circuit. (9)

Marange, Thomas:—On trial Rhodesia Mission Conference 1923; Deacon 1926; Elder 1928; 1923 Umtali 1924-25 Mutambara Circuit; 1926-38 Zimunya Circuit. (16)

Marange, Titus:—On trial Rhodesia Mission Conference 1924; Deacon 1926, Elder 1930; 1924-28 Salisbury; 1929-31 in school; 1932-33 Gandanzara Circuit; 1934-38 Umtali. (15)

Mparutsa, Moses:—On trial Rhodesia Mission Conference 1928; Deacon 1930; Elder 1933; 1928-29 Umtali 1930-38 Nyadiri. (11)

Mukombiwa, Zachariah:—On trial Rhodesia Mission Conference 1926; Deacon 1929; Elder 1932; 1926 Assistant Agriculture Dept. Old Umtali; 1927-28 Penhalonga; 1929-33 Headlands Circuit; 1934-38 Chiduku Circuit. (13)

Munjoma, Enoch:—On trial Rhodesia Mission Conference 1930; Deacon 1932; Elder 1934; 1930-31 in school; 1932-38 Mtoko. (9)

Munjoma, Isaiah:—On trial Rhodesia Mission Conference 1923; Deacon 1928; Elder 1930; 1923 Mtasa Circuit; 1924 Nyakatsapa; 1925 Umtali Native Church 1926-28 Old Umtali Circuit; 1929-36 Salisbury; 1937-1938 Mrewa. (16)

Murphree, Marshall J.:—On trial Nebraska Conference 1917; Deacon 1919, Elder 1920; Transferred Rhodesia Mission Conference 1921; 1921-23 Principal Hartzell Training School, Superintendent Old Umtali District; 1924 Superintendent Mutambara District; 1925 on furlough; 1926-31 Theological Department, Old Umtali; 1926 Gandanzara Circuit; 1927 Superintendent Rusapi District; 1928 Superintendent Old Umtali-Rusapi Districts, Rhodesia Mission Press; 1929 Rhodesia Mission Press; 1930-31 Superintendent Rusapi District, Mission Press; 1932 Superintendent Umtali-Rusapi District, St. Andrew's Church; 1933-34 On furlough; 1935-38 Superintendent, Old Umtali District. Principal Hartzell Training School, Mission Press. Neb. (4) (18)

Nduna, John:—On trial Rhodesia Mission Conference 1928; Deacon 1930, Elder 1932; Assistant, Hartzell Training School (Literary Department,) Old Umtali Circuit 1928-31; 1932-38 Teacher in Hartzell Training School Old Umtali. (11)

Ngonyama, Reginald:—On trial Rhodesia Mission Conference 1925 Deacon 1927, Elder 1929; 1925-26 Assistant, Mutambara Mission; 1927-28; Mutambara Circuit and Mutambara Mission; 1929-33 Marange Circuit 1934-38 Assistant, Hartzell Training School. (14)

O'Farrell, Thomas A.:—On trial East Central Africa Mission Conference 1910; Deacon and Elder 1910; 1910 to June, 1915 Mutambara Mission and Circuit; 1915-18 On furlough; Jan. to April, 1919 Principal Central Training School, Old Umtali; 1919-20 Mrewa Mission and Circuit; 1921-23, Superintendent, Mrewa District; 1924 On furlough; 1925-26 Superintendent, Mrewa District; 1927-31 Superintendent, Nyadiri District; 1932 On furlough; 1933-38 Superintendent, Nyadiri District. (29)

Roberts, George A.:—On trial Rhodesia Mission Conference 1921; Deacon and Elder 1921; 1907-1908 Old Umtali, Assistant Agriculture Department; 1909-10 Old Umtali Industries. 1911 Old Umtali Agriculture and Sunday School Missionary; 1912-13 Old Umtali Agriculture Department; 1914 On furlough; 1915-18 Old Umtali Agriculture and Animal Husbandry; 1919-20 Mutambara Circuit; 1921 On furlough; 1922-23 Old Umtali Department of Agriculture and Gandanzara Circuit; 1924 Principal Hartzell Training School and Gandanzara Circuit; 1925-28 Principal Hartzell Training School and Department of Agriculture; 1929-30 On furlough; 1931-37 Superintendent, Mutambara District; 1938 On furlough (18)

Rugayo, Jackson:—On trial Rhodesia Mission Conference 1930; Deacon 1932; Elder 1934; 1930-31 in school; 1932-38 Mutambara Circuit. (9)

Sells, Ernest L.:—On trial Kentucky Conference 1921; Deacon 1925, Elder 1927; 1921-22 in school; Transferred to Kansas Conference 1923; 1923-24 Winchester; 1925-27 in school; 1927-28 Elgin; Transferred to Rhodesia Mission Conference 1929; 1929-32 Superintendent, Mrewa District; 1933-35 Superintendent, Umtali - Rusapi District, Pastor St. Andrews Church; 1936 On furlough; 1937-1938 Superintendent, Umtali District, Pastor, St. Andrew's Church; 1938 Superintendent, Mutambara District. Ky. (2) Kan. (6) (10)

Taylor, H. Erne:—On trial Rhodesia Mission Conference 1921; Deacon and Elder 1921; 1921 Old Umtali Church and Department of Agriculture; 1922-23 Mutambara, Department of Agriculture and Boys School; 1924 On furlough; 1925-28 Mutambara Mission; 1929-30 Old Umtali, Agriculture and Industrial Departments; 1931-32 On furlough; 1933-34 Principal, Hartzell Training School; 1935-38 Old Umtali, Department of Agriculture; 1937-1938 Mission Treasurer and Correspondent. (18)

2. PROBATIONERS

Persons, Maurice E. — On trial Rhodesia Conference 1937; 1937-1938 Area Office.

Christlan, Phillip B.— On trial Rhodesia Conference 1938; Deacon and Elder 1938; 1938 St. Thomas Church, Umtali.

3. ADDENDA

The following is inserted so as to complete the record of those who are no longer members.

Greeley, Eddy H.:—On trial, East Central Africa Mission Conference 1907; Deacon 1909, Elder 1910; 1888 Cape Palmas Seminary, Liberia, West Africa; 1890 On furlough; 1894-95 White Plains Seminary, Liberia, West Africa; 1896 St. Paul's River Industrial School; 1897 On furlough; 1900-05 Old Umtali; 1906-10 Makomwe; 1911 On furlough; 1912-14 Old Umtali; 1915-16 Mrewa; 1917 Mtoko; 1918-20 Mission Press, Old Umtali; 1921-22 On furlough; 1923 Chiduka Circuit; 1924 Director of Language and Translations; 1925-26 Manager Rhodesia Mission Press and Editor Native Literature; 1927-37 Retired; Died April 8, 1938. (21)

CONFERENCE YEAR OCTOBER 1937- OCTOBER 1938

| STATISTICS of the Rhodesia Annual Conference 1938 | | | | Missionaries. | | Native Workers | | | | | | | Christian Community | | | | | | | Baptisms | Sunday Schools | Educational | | | | | Property | | | | | Contributions of Church on Foreign Field | | | | | | | | | | | | | | |
|---|---|---|---|---------------|-------|----------------------------------|-----------------------|--------------|-----------|-----------------|----------------------|-----------------|---------------------|----------------------|----------------|---------------------|------------------------------------|--|---|---------------------------------------|----------------------|-------------|--------------------|-----------------|-------------------|--------------------|--------------|----------------------|--------------|----------|------------------------|--|----------|-------------------------|--------------|-----------------------------|----------------|-------------------------------|---|--|-------------------------------|-------------|---|---------------------------------------|---|------------------------------|
| | | | | Men | Women | Board Missionaries { W. F. M. S. | Other Foreign Workers | Ord. | | | Unordained | | | | Church Members | Preparatory Members | Total Preparatory and Full Members | Baptized Children not in Cols. 14, 15. | Total Christian Community (Cols. 16, 17.) | Preparatory Members Rec'd during year | Non-Resident Members | Marriages | Deaths During year | Adults Baptized | Children Baptized | No. Sunday Schools | No. Scholars | No. Boarding Schools | No. Teachers | Students | No. Elementary Schools | No. Teachers | Students | Total Under Instruction | No. Churches | Estimated Value of Churches | No. Parsonages | Estimated Value of Parsonages | Estimated Value, Schools Hospitals, Printing Press, Lands, etc. | Estimated Value, all W.F.M.S. Property | Indebtedness | | Contributions, Support Local Church, Ch. Collections, Tithe, etc. | For Building Repairs, Equipment, etc. | For Other local purposes Govt. Grant, Farm Produce etc. | Total Contributions on Field |
| | | | | | | | | Full Members | Con. Mem. | Local Preachers | Conf. Memb. On Trial | Local Preachers | Exhorters | Other Native Workers | | | | | | | | | | | | | | | | | | | | | | | | | | | Native Workers of W. F. M. S. | Amount Paid | | | | |
| 1 | 2 | 3 | 4 | 5 | 6 | 7 | 8 | 9 | 10 | 11 | 12 | 13 | 14 | 15 | 16 | 17 | 18 | 19 | 20 | 21 | 22 | 23 | 24 | 25 | 26 | 27 | 28 | 29 | 30 | 31 | 32 | 33 | 34 | 35 | 36 | 37 | 38 | 39 | 40 | 41 | 42 | 43 | 44 | 45 | | |
| Mutambara Dist. Totals | | | 2 | 4 | 1 | | | | 8 | 9 | | 11 | 444 | 369 | 813 | 258 | 1071 | 134 | | 10 | 2 | 56 | 20 | 13 | 1329 | 2 | 21 | 235 | 11 | 33 | 918 | 1153 | 13 | £620.0.0 | 12 | £1219. 0.0 | 5090. 0.0 | 6855. 0.0 | | | 143. 2.10 | 15. 0.0 | 1872. 7.1 | 2030. 9.11 | | |
| OLD UMTALI DISTRICT | | | | | | | | | | | | | | | | | | | | | | | | | | | | | | | | | | | | | | | | | | | | | | |
| Old Umtali Circuit | | | | | | | | | | | | | | | | | | | | | | | | | | | | | | | | | | | | | | | | | | | | | | |
| Mundenda | | | | | 1 | | | | 5 | | | 63 | 38 | 101 | 59 | 160 | 14 | 4 | 1 | 6 | | | 1 | 2 | 125 | | | | 1 | 1 | 65 | 65 | 1 | 25. 0.0 | 1 | 20. 0.0 | | | | | 13. 0.0 | | 16. 5.0 | 29. 5.0 | | |
| Manyarara | | | | | | | | | 8 | | | 59 | 16 | 75 | 65 | 140 | 5 | | 4 | 2 | | | 6 | 2 | 101 | | | | 1 | 1 | 55 | 55 | 1 | 25. 0.0 | 1 | 15. 0.0 | | | | | 16. 0.0 | | 13.15.0 | 29.15.0 | | |
| Mandiambira | | | | | | | | | 5 | | | 44 | 6 | 50 | 45 | 95 | | | 1 | 2 | | | 9 | 2 | 53 | | | | 1 | 1 | 32 | 32 | 1 | 25. 0.0 | 1 | 20. 0.0 | | | | | 12. 4.3 | | 8. 0.0 | 20. 4.3 | | |
| Marara | | | | | | | | | 3 | | | 35 | 5 | 40 | 18 | 58 | | | | | | | 2 | | 79 | | | | 1 | 1 | 29 | 29 | 1 | 25. 0.0 | 1 | 20. 0.0 | | | | | 6.12.0 | | 7. 5.0 | 13.17.0 | | |
| Chikanga | | | | | | | | | 1 | | | 10 | 10 | 20 | 3 | 23 | | | | | | | 1 | 1 | 50 | | | | 1 | 1 | 26 | 26 | | | | | | | 2. 5.6 | | | | 2. 5.6 | | | |
| Penhalonga | | | | | 1 | | | | 4 | | | 64 | 79 | 143 | 43 | 186 | | 9 | | 5 | 1 | 2 | | 1 | | 79 | | | | 1 | 2 | 69 | 69 | 1 | 150. 0.0 | 1 | 30. 0.0 | | | | | 20. 5.11 | | | 17. 5.0 | 37.10.11 |
| Totals | | | | | 2 | | | | 26 | | | 275 | 154 | 429 | 233 | 662 | 28 | 4 | 11 | 13 | 2 | 16 | 10 | 487 | | | | 6 | 7 | 276 | 276 | 5 | 250. 0.0 | 5 | 105. 0.0 | | | | | 70. 7.8 | | | 62.10.0 | 132.17.5 | | |
| Gandanzara Circuit | | | | | | | | | | | | | | | | | | | | | | | | | | | | | | | | | | | | | | | | | | | | | | |
| Gandanzara | | | | | 1 | | | | 3 | 1 | | 165 | 31 | 196 | 148 | 344 | 5 | 18 | 3 | 3 | 17 | 8 | 1 | 170 | | | | 1 | 4 | 115 | 115 | 1 | 75. 0.0 | 3 | 60. 0.0 | | | | | 18. 4.0 | | | 28.15.0 | 46.19.0 | | |
| Mukahananana | | | | | 1 | | | | 4 | 1 | | 150 | 37 | 187 | 173 | 360 | 13 | | 6 | 2 | 18 | 4 | 1 | 210 | | | | 1 | 2 | 91 | 91 | 1 | 57. 0.0 | 1 | 20. 0.0 | | | | | 21.13.9 | | | 28.15.0 | 50. 8.9 | | |
| Chikuruwo | | | | | | | | | 1 | | | 61 | 10 | 71 | 27 | 98 | | | 1 | 1 | 3 | | 1 | 100 | | | | 1 | 1 | 41 | 41 | 1 | 35. 0.0 | 1 | 20. 0.0 | | | | | 11.18.0 | | | 10. 5.0 | 22. 3.0 | | |
| Game Valley | | | | | | | | | 2 | | | 38 | 23 | 66 | 32 | 98 | | | 1 | 1 | 6 | 1 | 1 | 67 | | | | 1 | 1 | 29 | 29 | 1 | 10. 0.0 | 1 | 10. 0.0 | | | | | 5.12.9 | | | 7. 5.0 | 12.17.9 | | |
| Ndingi | | | | | | | | | 2 | | | 83 | 46 | 129 | 52 | 181 | 8 | | 1 | 1 | 3 | | 1 | 50 | | | | 1 | 1 | 29 | 29 | 1 | 20. 0.0 | 1 | 20. 0.0 | | | | | 14.10.0 | | | 7. 5.0 | 21.15.0 | | |
| Tswikiro | | | | | | | | | 1 | | | 60 | 26 | 86 | 40 | 126 | 4 | 2 | | | | 2 | 5 | 1 | 30 | | | | 1 | 1 | 28 | 28 | | | | | 7. 0.0 | | | | 5.18.2 | | | 12.18.2 | | |
| Mapara | | | | | | | | | 1 | | | 46 | 12 | 58 | 37 | 95 | 2 | 2 | | | | | 1 | 45 | | | | 1 | 1 | 28 | 28 | | | | | 2. 3.0 | | | | 2. 3.0 | | | | | | |
| Zuzi | | | | | | | | | 1 | | | 47 | 22 | 69 | 24 | 93 | 2 | 2 | | | | 10 | 1 | 60 | | | | | 1 | 1 | 10. 0.0 | | | | | | 12. 2.6 | | | | 12. 2.6 | | | | | |
| Totals | | | | | 2 | | | | 15 | 2 | | 650 | 212 | 862 | 533 | 1395 | 46 | 25 | 11 | 7 | 59 | 19 | 7 | 732 | | | | 6 | 10 | 333 | 333 | 8 | 237. 0.0 | 7 | 130. 0.0 | | | | | 93. 4.0 | | | 88. 3.2 | 181. 7.2 | | |
| Chiduku Circuit | | | | | | | | | | | | | | | | | | | | | | | | | | | | | | | | | | | | | | | | | | | | | | |
| Chinyadza | | | | | | | | | 1 | | | 32 | 30 | 62 | 12 | 74 | 5 | | | | | | 1 | 30 | | | | 1 | 1 | 31 | 31 | 1 | 5. 0.0 | | | | | | | | 4. 1.3 | | | 7.15.0 | 11.16.3 | |
| Kufa | | | | | | | | | 2 | | | 50 | 13 | 63 | 16 | 79 | | 1 | | | | 1 | 1 | 100 | | | | 1 | 1 | 44 | 44 | 1 | 15. 0.0 | 1 | 10. 0.0 | | | | | 4. 3.9 | | | 11. 0.0 | 15. 3.9 | | |
| Gurure | | | | | | | | | 4 | | | 84 | 23 | 107 | 24 | 131 | 4 | 2 | | | | 2 | 1 | 120 | | | | 1 | 1 | 81 | 81 | 1 | 60. 0.0 | 1 | 10. 0.0 | | | | | 7.19.3 | | | 18.15.0 | 26.14.3 | | |
| Manyora | | | | | | | | | 1 | | | 48 | 20 | 68 | 22 | 90 | 3 | | | | | | 2 | 1 | 80 | | | | 1 | 1 | 47 | 47 | 1 | 10. 0.0 | 1 | 10. 0.0 | | | | | 5. 0.0 | | | 11.15.0 | 16.15.0 | |
| Muziti | | | | | | | | | 3 | | | 133 | 57 | 190 | 26 | 216 | 6 | 3 | | 1 | | 2 | 3 | 200 | | | | 1 | 2 | 54 | 54 | 1 | 25. 0.0 | 1 | 20. 0.0 | | | | | 9.10.0 | | | 13.10.0 | 23. 0.0 | | |
| Rukweza | | | | | 1 | | | | 1 | | | 45 | 24 | 69 | 10 | 79 | | 2 | | | | 3 | 2 | 60 | | | | | 1 | 1 | 40. 0.0 | 2 | 50. 0.0 | | | | | 1. 0.0 | | | | 1. 0.0 | | | | |
| Sharara | | | | | | | | | 1 | | | 89 | 41 | 130 | 28 | 158 | 7 | | 3 | | | 3 | 3 | 120 | | | | 1 | 2 | 55 | 55 | 1 | 250. 0.0 | 1 | 10. 0.0 | | | | | 14.10.9 | | | 13.15.0 | 28. 5.9 | | |
| Chikanda | | | | | | | | | 1 | | | 8 | 11 | 19 | 5 | 24 | 6 | | | | | | 6 | 1 | 120 | | | | 1 | 2 | 55 | 55 | 1 | 250. 0.0 | 1 | 10. 0.0 | | | | | 3. 0.0 | | | 3. 0.0 | | |
| Chiduku | | | | | | | | | 1 | | | 25 | 23 | 48 | 9 | 57 | 8 | | | | | | | 1 | 29 | | | | | 1 | 5. 0.0 | 1 | 5. 0.0 | | | | | | | | | 3. 0.0 | | | | |
| Totals | | | | | 1 | | | | 14 | | | 514 | 242 | 756 | 152 | 908 | 39 | 8 | 3 | 1 | 19 | 11 | 11 | 739 | | | | 6 | 8 | 312 | 312 | 8 | 410. 0.0 | 8 | 115. 0.0 | | | | | 49. 5.0 | | | 76.10.0 | 125.15.0 | | |
| Odzi Circuit | | | | | | | | | | | | | | | | | | | | | | | | | | | | | | | | | | | | | | | | | | | | | | |
| Odzi | | | | | 1 | | | | 4 | | | 25 | 24 | 49 | 10 | 59 | 5 | 1 | | | | | 14 | 10 | 1 | 77 | | | | 1 | 1 | 24 | 24 | 1 | 20. 0.0 | 1 | 15. 0.0 | 750. 0.0 | | | | 6.12.6 | | | 5.18.0 | 12.10.6 |
| Katsadzura | | | | | | | | | 2 | | | 32 | 42 | 74 | 25 | 99 | 4 | | | | | | | 1 | 90 | | | | 1 | 1 | 21 | 21 | 1 | 10. 0.0 | 1 | 10. 0.0 | | | | | 8.10.3 | | | 5. 5.0 | 13.15.3 | |
| Chiremba | | | | | | | | | | | | 49 | 64 | 113 | 32 | 145 | 14 | 2 | | | | | 15 | 3 | 1 | 82 | | | | 1 | 1 | 32 | 32 | 1 | 10. 0.0 | 1 | 10. 0.0 | | | | | 10.18.9 | | | 8. 0.0 | 18.18.9 |
| Chikunda | | | | | | | | | 1 | | | 6 | 5 | | | | | | | | | | 2 | 1 | 10 | | | | | | 1 | 8. 0.0 | | | | | | | 2. 0 | | | | 2. 0 | | | |
| Totals | | | | | 1 | | | | 7 | | | 112 | 135 | 247 | 67 | 314 | 23 | 3 | | | | 31 | 13 | 4 | 259 | | | | 3 | 3 | 77 | 77 | 4 | 48. 0.0 | 3 | 35. 0.0 | 750. 0.0 | | | | 26. 3.6 | | | 19. 3.0 | 45. 6.6 | |
| Nyakatsapa Circuit | | | | | | | | | | | | | | | | | | | | | | | | | | | | | | | | | | | | | | | | | | | | | | |
| Nyakatsapa | | | | | 1 | | | | 5 | | | 222 | 63 | 285 | 232 | 517 | 9 | 45 | 7 | 3 | | 8 | 8 | 2 | 140 | | | | 1 | 3 | 117 | 117 | 1 | 200. 0.0 | 1 | 700. 0.0 | 1600. 0.0 | | | | | 33. 5.3 | | | 29. 5.0 | 62.10.3 |

CONFERENCE YEAR OCTOBER 1937- OCTOBER 1938

| STATISTICS of the Rhodesia Annual Conference 1938 | Missionaries. | | Native Workers | | | | Christian Community | | | | | | Baptisms | | Sunday Schools | | Educational | | | | Property | | | | | Contributions of Church on Foreign Field | | | | | | | | | | | | | | | | | | | | | |
|---|---------------|-------|--------------------------------------|--------------------------|-----------|-----------------|---------------------|-----------|-------------------------------------|----------------|----------------|---------------------|------------------------------------|--|---|---------------------------------------|----------------------|-----------|--------------------|-----------------|-------------------|--------------------|--------------|----------------------|--------------|---|------------------------|--------------|----------|-------------------------|--------------|-----------------------------|----------------|-------------------------------|---|--|--------------|-----------|---|---------------------------------------|---|------------------------------|----------|------------|------------|--|--|
| | Men | Women | Board Missionaries W. F. M. S. | Other Foreign Workers | Ord. | | Unordained | | | | Church Members | Preparatory Members | Total Preparatory and Full Members | Baptized Children not in Cols. 14, 15. | Total Christian Community (Cols. 16, 17). | Preparatory Members Rec'd during year | Non-Resident Members | Marriages | Deaths During year | Adults Baptized | Children Baptized | No. Sunday Schools | No. Scholars | No. Boarding Schools | No. Teachers | Students | No. Elementary Schools | No. Teachers | Students | Total Under Instruction | No. Churches | Estimated Value of Churches | No. Parsonages | Estimated Value of Parsonages | Estimated Value, Schools Hospitals, Printing Press, Lands, etc. | Estimated Value, all W.F.M.S. Property | Indebtedness | | Contributions, Support Local Church, Ch. Collections, Tithe, etc. | For Building Repairs, Equipment, etc. | For Other local purposes Govt. Grant, Farm Produce etc. | Total Contributions on Field | | | | | |
| | | | | | Con. Mem. | Local Preachers | Local Preachers | Exhorters | Other Native Workers of W. F. M. S. | On Real Estate | | | | | | | | | | | | | | | | | | | | | | | | | | | Amount Paid | | | | | | | | | | |
| | 1 | 2 | 3 | 4 | 5 | 6 | 7 | 8 | 9 | 10 | 11 | 12 | 13 | 14 | 15 | 16 | 17 | 18 | 19 | 20 | 21 | 22 | 23 | 24 | 25 | 26 | 27 | 28 | 29 | 30 | 31 | 32 | 33 | 34 | 35 | 36 | 37 | 38 | 39 | 40 | 41 | 42 | 43 | 44 | 45 | | |
| | Nhunhama | | | | | | | | | 2 | | | | 68 | 29 | 97 | 86 | 183 | 12 | 8 | 2 | 3 | 4 | 7 | 2 | 120 | | | | 1 | 1 | 67 | 67 | 1 | £ 50. 0.0 | 1 | £ 10. 0.0 | | | | 17. 6.6 | | 16.15.0 | 34. 1.6 | | | |
| Rupinda | | | | | | | | | 2 | | | | 82 | 35 | 117 | 118 | 235 | 7 | 20 | | | 4 | 17 | 2 | 109 | | | | 1 | 1 | 57 | 57 | 1 | 10. 0.0 | 1 | 10. 0.0 | | | | 10. 5.0 | | 14. 5.0 | 24.10.0 | | | | |
| Nyamukwarara | | | | | | | | | 2 | | | | 48 | 23 | 71 | 69 | 140 | 3 | 10 | | | 1 | 3 | 2 | 94 | | | | 1 | 1 | 26 | 26 | 1 | 10. 0.0 | 1 | 10. 0.0 | | | | 13.19.0 | | 6.10.0 | 20. 9.0 | | | | |
| Wengo | | | | | | | | | | | | | 50 | 25 | 75 | 41 | 116 | 3 | 13 | | | | 3 | 2 | 35 | | | | | | | | 1 | 10. 0.0 | 1 | 10. 0.0 | | | | 4.11.6 | | 4.11.6 | 4.11.6 | | | | |
| Vumbunu | | | | | | | | | 1 | | | | 24 | 19 | 43 | 42 | 85 | 4 | 9 | | | | 1 | 2 | 36 | | | | | | | | 1 | 25. 0.0 | 1 | 10. 0.0 | | | | 1. 0.0 | | 1. 0.0 | 1. 0.0 | | | | |
| Zinyembe | | | | | | | | | | | | | 41 | 17 | 58 | 35 | 93 | 6 | 5 | | | | | 2 | 35 | | | | | | | 1 | 10. 0.0 | 1 | 10. 0.0 | | | | 2. 4.0 | | 2. 4.0 | 2. 4.0 | | | | | |
| Sherukuru | | | | | | | | | 2 | | | | 39 | 32 | 71 | 44 | 115 | 12 | 6 | | | | 3 | 2 | 45 | | | | 1 | 1 | 22 | 22 | 1 | 10. 0.0 | 1 | 20. 0.0 | | | | 5.18.0 | | 5.10.0 | 11. 8.0 | | | | |
| Totals | | | | | 1 | | 14 | | | | | | 574 | 243 | 817 | 667 | 1484 | 56 | 116 | 23 | 11 | 17 | 42 | 16 | 614 | | | | 5 | 7 | 289 | 289 | 8 | 325. 0.0 | 8 | 780. 0.0 | 1,600. 0.0 | | | | 88. 9.3 | | 72. 5.0 | 160.14.3 | | | |
| Old Umtali Mission | 2 | 5 | 3 | 4 | 5 | | 32 | | | | 7 | | 342 | 65 | 407 | 200 | 607 | 3 | 36 | 1 | | 5 | 26 | 3 | 690 | 2 | 20 | 365 | 1 | 4 | 144 | 509 | 1 | 1000. 0.0 | 8 | 5000. 0.0 | 31700.0.0 | 9000. 0.0 | | | | 84. 7.6 | 69.16.0 | 2,298. 0.0 | 2,452. 3.6 | | |
| Old Umtali Out-Stations | | | | | | 7 | | | | | | | 2125 | 986 | 3111 | 1652 | 4763 | 192 | 156 | 48 | 32 | 128 | 101 | 46 | 2831 | | | | 27 | 35 | 1287 | 1287 | 33 | 1270. 0.0 | 31 | 1,165. 0.0 | 2,350. 0.0 | | | | 327. 9.5 | | 318.11.2 | 646. 0.7 | | | |
| District Totals | 2 | 5 | 3 | 4 | 12 | | 108 | 2 | | 7 | | | 2367 | 1051 | 3518 | 1852 | 5360 | 195 | 192 | 49 | 22 | 133 | 127 | 49 | 3521 | 2 | 20 | 365 | 28 | 39 | 1431 | 1796 | 34 | 2,270. 0.0 | 39 | 6,165. 0.0 | 34050.0.0 | 9000. 0.0 | | | | 411.16.11 | 69.16.0 | 2,616.11.2 | 3098.3.11 | | |
| UMTALI DISTRICT | | | | | | | | | | | | | | | | | | | | | | | | | | | | | | | | | | | | | | | | | | | | | | | |
| Marange Circuit | | | | | | | | | | | | | | | | | | | | | | | | | | | | | | | | | | | | | | | | | | | | | | | |
| Chirinda | | | | | | | | | 3 | | | | 37 | 18 | 55 | 36 | 91 | | | | | 1 | 5 | 1 | 48 | | | | 1 | 1 | 60 | 60 | 1 | 10. 0.0 | 1 | 10. 0.0 | | | | 10.11.9 | | 6. 0.0 | 16.11.9 | | | | |
| Chipfatsura | | | | | | | | | 5 | | | | 49 | 19 | 68 | 73 | 141 | | | | 2 | 3 | 1 | 86 | | | | 1 | 2 | 99 | 99 | 1 | 30. 0.0 | 1 | 10. 0.0 | | | | 19.13.0 | 30. 0.0 | 16. 0.0 | 65.13.0 | | | | | |
| Mafarikwa | | | | | | | | | 1 | | | | 6 | 6 | 12 | 7 | 19 | | | | | 1 | 1 | 1 | 36 | | | | 1 | 1 | 25 | 25 | 1 | 10. 0.0 | 1 | 10. 0.0 | | | | 4. 6.3 | | 4. 6.3 | 4. 6.3 | | | | |
| Makomwe | | | | | 1 | | | | 3 | | | | 35 | 21 | 56 | 21 | 77 | 4 | | | | 3 | 1 | 57 | | | | 1 | 2 | 79 | 79 | 1 | 20. 0.0 | 1 | 50. 0.0 | | | | 15. 3.9 | | 11.15.0 | 26.18.9 | | | | | |
| Masasi | | | | | | | | | 2 | | | | 26 | 15 | 41 | 20 | 61 | | | | | 1 | 1 | 45 | | | | 1 | 1 | 58 | 58 | 1 | 10. 0.0 | 1 | 8. 0.0 | | | | 13.17.9 | 3. 0.0 | 9.10.0 | 26. 7.6 | | | | | |
| Maswaure | | | | | | | | | 1 | | | | 7 | 2 | 9 | 6 | 15 | 3 | | | | | 1 | 17 | | | | | | | | | 1 | 10. 0.0 | | | | | | 1.13.0 | | 1.13.0 | 1.13.0 | | | | |
| Mutumba | | | | | | | | | | | | | | | | | | | | | | | | 1 | 34 | | | | | | | | | | | | | | | | | | | 2.19.0 | | | |
| Musiringofa | | | | | | | | | 2 | | | | 22 | 12 | 34 | 13 | 47 | 9 | | | | | 1 | 40 | | | | 1 | 1 | 67 | 67 | 1 | 10. 0.0 | 1 | 8. 0.0 | | | | 12.11.6 | | 14.15.0 | 27. 6.6 | | | | | |
| Matanda | | | | | | | | | 2 | | | | 36 | 8 | 44 | 25 | 69 | 5 | | | 4 | 3 | 3 | 1 | 35 | | | 1 | 1 | 50 | 50 | 1 | 15. 0.0 | 1 | 7. 0.0 | | | | 10. 7.0 | 10.0.0 | 7. 5.0 | 27.12.0 | | | | | |
| Mutsago | | | | | | | | | 3 | | | | 30 | 13 | 43 | 34 | 77 | 8 | | | | 1 | 4 | 2 | 58 | | | | 1 | 1 | 20. 0.0 | 1 | 3. 0.0 | | | | 16.10.3 | | 16.10.3 | 16.10.3 | | | | | | | |
| Nyika | | | | | | | | | 2 | | | | 16 | 6 | 22 | 11 | 33 | | | | | 4 | 4 | 1 | 37 | | | 1 | 1 | 36 | 36 | 1 | 10. 0.0 | 1 | 5. 0.0 | | | | 10. 8.0 | | 7. 5.0 | 17.13.0 | | | | | |
| Shundure | | | | | | | | | 5 | | | | 34 | 16 | 50 | 20 | 70 | 6 | | | 4 | 1 | 6 | 3 | 1 | 78 | | | 1 | 2 | 119 | 119 | 1 | 25. 0.0 | 1 | 10. 0.0 | | | | 17.10.6 | 20. 0.0 | 5.10.0 | 43. 0.6 | | | | |
| Circuit Totals | | | | | 1 | | 29 | | | | | | 298 | 136 | 434 | 266 | 700 | 35 | | | 10 | 7 | 29 | 8 | 12 | 571 | | | | 9 | 12 | 593 | 593 | 11 | 170. 0.0 | 10 | 121. 0.0 | | | | 135.11.6 | 63. 0.0 | 78. 0.0 | 276.11.6 | | | |
| Zimunya Circuit | | | | | | | | | | | | | | | | | | | | | | | | | | | | | | | | | | | | | | | | | | | | | | | |
| Bvumba | | | | | | | | | 2 | | | | 134 | 130 | 264 | 28 | 292 | 3 | | | | 1 | 6 | 1 | 80 | | | | 1 | 1 | 72 | 72 | 1 | 10. 0.0 | 1 | 8. 0.0 | | | | 19. 3.6 | | 15. 5.0 | 34. 8.6 | | | | |
| Chitakatira | | | | | | | | | 7 | 1 | 1 | | 122 | 120 | 242 | 50 | 292 | 14 | | | | | 10 | 4 | 1 | 180 | | | 1 | 3 | 152 | 152 | 1 | 60. 0.0 | 1 | 12. 0.0 | | | | 28. 0.0 | 10. 0.0 | 38. 5.0 | 76. 5.0 | | | | |
| Dangari | | | | | | | | | 3 | 1 | | | 70 | 50 | 120 | 34 | 154 | 8 | | | | 1 | 6 | 6 | 1 | 80 | | | 1 | 1 | 87 | 87 | 1 | 10. 0.0 | 1 | 10. 0.0 | | | | 14. 2.6 | | 14. 5.0 | 28. 7.6 | | | | |
| Gwese | | | | | | | | | 3 | 1 | 1 | | 18 | 12 | 30 | 11 | 41 | 6 | | | | | 1 | 1 | 60 | | | | 1 | 1 | 49 | 49 | 1 | 10. 0.0 | 1 | 3. 0.0 | | | | 14. 5.0 | | 8.10.0 | 22.15.0 | | | | |
| Mukozhiwa | | | | | | | | | 4 | | | | 55 | 18 | 73 | 33 | 106 | 1 | | | | | 5 | 1 | 50 | | | | 1 | 1 | 50 | 50 | 1 | 15. 0.0 | 1 | 10. 0.0 | | | | 20. 5.0 | | 31.15.0 | 31.15.0 | | | | |
| Munyarari | | | | | | | | | 4 | | | | 54 | 56 | 110 | 33 | 143 | 11 | | | | | 7 | 1 | 75 | | | | 1 | 1 | 84 | 84 | 1 | 20. 0.0 | 1 | 20. 0.0 | | | | 12.13.0 | | 13.10.0 | 26. 3.0 | | | | |
| Muradzikwa | | | | | | 1 | | | 6 | 1 | 1 | | 94 | 81 | 175 | 70 | 245 | 11 | | | | 2 | 1 | 8 | 10 | 1 | 90 | | | 1 | 3 | 146 | 146 | 1 | 50. 0.0 | 1 | 30. 0.0 | | | | 23.14.3 | 15. 0.0 | 23.15.0 | 61. 9.3 | | | |
| Murare | | | | | | | | | 3 | 1 | 2 | | 45 | 72 | 117 | 25 | 142 | 6 | | | | 1 | 10 | 7 | 1 | 90 | | | 1 | 2 | 89 | 89 | 1 | 20. 0.0 | 2 | 25. 0.0 | | | | 23.10.0 | | 21. 5.0 | 44.15.0 | | | | |
| Rowa | | | | | | | | | 5 | | | | 49 | 34 | 83 | 18 | 101 | 6 | | | | 2 | 3 | 1 | 30 | | | | | | | | | | | | | | | | | | | | | | |

CONFERENCE YEAR OCTOBER 1937- OCTOBER 1938

STATISTICS
of the
Rhodesia Annual
Conference
1938

| 1 | Missionaries. | | Native Workers | | | | | Christian Community | | | | | | Baptisms | Sunday Schools | Educational | | | | | | Property | | | | | Contributions of Church on Foreign Field | | | | | | | | | | | | | | | | | |
|-------------------------|---------------|-------|--------------------------------|-----------------------|--------------|----------|-----------------|----------------------|-----------------|-----------|----------------|---------------------|------------------------------------|--|--|---------------------------------------|----------------------|-----------|--------------------|-----------------|-------------------|--------------------|--------------|----------------------|-------------------------------|----------------------|--|----------|------------------------|-------------------------|--------------|-----------------------------|----------------|-------------------------------|---|--|--------------|------------|---|---------------------------------------|---|------------------------------|----------------|-------------|
| | Men | Women | Board Missionaries W. F. M. S. | Other Foreign Workers | Ord. | | Unordained | | | | Church Members | Preparatory Members | Total Preparatory and Full Members | Baptized Children not in Cols. 14, 15. | Total Christian Community (Cols. 16, 17) | Preparatory Members Rec'd during year | Non-Resident Members | Marriages | Deaths During year | Adults Baptized | Children Baptized | No. Sunday Schools | No. Scholars | Boarding Schools | | Elementary Schools | | | | Total Under Instruction | No. Churches | Estimated Value of Churches | No. Parsonages | Estimated Value of Parsonages | Estimated Value, Schools Hospitals, Printing Press, Lands, etc. | Estimated Value, all W.F.M.S. Property | Indebtedness | | Contributions, Support Local Church, Ch. Collections, Tithe, etc. | For Building Repairs, Equipment, etc. | For Other local purposes Govt. Grant, Farm Produce etc. | Total Contributions on Field | | |
| | | | | | Full Members | On Trial | Local Preachers | Conf. Memb. On Trial | Local Preachers | Exhorters | | | | | | | | | | | | | | Other Native Workers | Native Workers of W. F. M. S. | No. Boarding Schools | No. Teachers | Students | No. Elementary Schools | | | | | | | | No. Teachers | Students | | | | | On Real Estate | Amount Paid |
| | 2 | 3 | 4 | 5 | 6 | 7 | 8 | 9 | 10 | 11 | 12 | 13 | 14 | 15 | 16 | 17 | 18 | 19 | 20 | 21 | 22 | 23 | 24 | 25 | 26 | 27 | 28 | 29 | 30 | 31 | 32 | 33 | 34 | 35 | 36 | 37 | 38 | 39 | 40 | 41 | 42 | 43 | 44 | 45 |
| Umtali | 1 | 1 | | | | | | | | | | 115 | 10 | 125 | 150 | 275 | | | 3 | 1 | | 8 | 1 | 100 | | | | | | | 1 | £1800. 0.0 | 1 | £2,000. 0.0 | 500. 0.0 | | 25 | | 174.19. 9 | | 174.19. 9 | | | |
| St. Andrews | | | | 2 | | | | | | | | 13 | | 13 | 10 | 23 | | | | | | | 1 | 30 | | | | | | | | | | | | | | | | | | | | |
| St. Thomas | | | 1 | | | | | | | | | 267 | 122 | 389 | 173 | 562 | 31 | | 1 | | 9 | 20 | 3 | 251 | | | 2 | 4 | 360 | 360 | 1 | 300. 0.0 | 1 | 100. 0.0 | | 3,500. 0.0 | | | 78. 0. 0 | | 89. 4. 0 | 167. 4. 0 | | |
| Native Church | | | | 1 | | | | | 18 | | | 1 | | | | | | | | | | | | | | | | | | | | | | | | | | | | | | | | |
| Umtali Circuit Totals | 1 | 1 | 1 | 2 | 1 | | | | 18 | | | 1 | 395 | 132 | 527 | 333 | 860 | 31 | 4 | 1 | 9 | 28 | 5 | 381 | | | 2 | 4 | 360 | 360 | 2 | 2100. 0.0 | 2 | 2,100. 0.0 | 500. 0.0 | 3,500. 0.0 | 25 | | 252.19. 9 | | 89. 4. 0 | 342. 3. 9 | | |
| District Totals | 1 | 1 | 1 | 2 | 3 | 2 | | | 84 | 7 | 5 | 1 | 1364 | 884 | 2248 | 917 | 3165 | 146 | 22 | 10 | 108 | 66 | 27 | 1727 | | | 20 | 30 | 1740 | 1740 | 23 | 2,520. 0.0 | 22 | 2344. 0.0 | 500. 0.0 | 3,500. 0.0 | 25 | | 552. 7. 9 | 118. 0. 0 | 329. 4. 0 | 999.11. 9 | | |
| Summary by Districts | | | | | | | | | | | | | | | | | | | | | | | | | | | | | | | | | | | | | | | | | | | | |
| Mtoko | 1 | | | | 2 | | | | 19 | 6 | | | 298 | 289 | 587 | 277 | 864 | 52 | 29 | 4 | 3 | 23 | 27 | 19 | 1363 | 1 | 2 | 60 | 17 | 22 | 951 | 1011 | 20 | 420. 0.0 | 20 | 855. 0.0 | 500. 0.0 | | | 103. 5. 0 | | 318. 0. 8 | 421. 5. 8 | |
| Nyadiri | 1 | 1 | 3 | | 2 | | | | 61 | 1 | 10 | | 661 | 598 | 1259 | 537 | 1796 | 94 | | 6 | 6 | 48 | 15 | 27 | 1913 | 3 | 20 | 310 | 18 | 36 | 1224 | 1534 | 22 | 365. 0.0 | 24 | 2,491. 0.0 | 4,470. 0.0 | 5,620. 0.0 | | | 248. 9. 0 | 265. 0.0 | 1347. 1. 0 | 1860. 0. 0 |
| Mrewa | 1 | 1 | | | 5 | | | | 70 | 6 | 4 | | 788 | 375 | 1163 | 723 | 1886 | 143 | 16 | 14 | 5 | 68 | 71 | 36 | 2536 | 1 | 4 | 108 | 21 | 24 | 1504 | 1612 | 30 | 1,149. 0.0 | 24 | 1,166. 0.0 | 1,810. 0.0 | | | 361.17. 6 | 65.10.0 | 307.19. 6 | 735. 7. 0 | |
| Old Umtali Out-Stations | | | | | 7 | | | | 76 | 2 | | | 2125 | 986 | 3111 | 1652 | 4763 | 192 | 156 | 48 | 32 | 128 | 101 | 46 | 2831 | | | | 27 | 35 | 1287 | 1287 | 33 | 1,270. 0.0 | 31 | 1,165. 0.0 | 2,350. 0.0 | | | 327. 9. 5 | | 318.11. 2 | 646. 0. 7 | |
| Old Umtali Mission | 2 | 5 | 3 | | 4 | 5 | | | 32 | | 7 | | 342 | 65 | 407 | 200 | 607 | 3 | 36 | 1 | | 5 | 26 | 3 | 690 | 2 | 20 | 365 | 1 | 4 | 144 | 509 | 1 | 1,000. 0.0 | 8 | 5,000. 0.0 | 31700. 0.0 | 9,000. 0.0 | | | 84. 7. 6 | 69.16.0 | 2298. 0. 0 | 2452. 3. 6 |
| Mutambara | | | | | 2 | 4 | 1 | | 8 | 9 | 11 | | 444 | 369 | 813 | 258 | 1071 | 134 | | 10 | 2 | 56 | 20 | 13 | 1329 | 2 | 21 | 235 | 11 | 33 | 918 | 1153 | 13 | 620. 0.0 | 12 | 1,219. 0.0 | 5,090. 0.0 | 6,855. 0.0 | | | 143. 2.10 | 15. 0.0 | 1872. 7. 1 | 2030. 9.11 |
| Umtali | 1 | 1 | 1 | 2 | 3 | 2 | | | 84 | 7 | 5 | 1 | 1364 | 884 | 2248 | 917 | 3165 | 146 | | 22 | 10 | 108 | 66 | 27 | 1727 | | | | 20 | 30 | 1740 | 1740 | 23 | 2,520. 0.0 | 22 | 2,344. 0.0 | 500. 0.0 | 3,500. 0.0 | 25 | 203 | 552. 7. 9 | 118. 0. 0 | 329. 4. 0 | 999.11. 9 |
| Totals for 1938 | 6 | 8 | 9 | 10 | 25 | 2 | | | 350 | 29 | 9 | 29 | 6022 | 3566 | 9588 | 4564 | 14152 | 764 | 237 | 105 | 58 | 436 | 326 | 171 | 12389 | 9 | 67 | 1078 | 115 | 184 | 7768 | 8846 | 142 | 7,134. 0.0 | 141 | 14,240. 0.0 | 45920. 0.0 | 24975. 0.0 | 25 | 203 | 1820.19. 1 | 533. 6.0 | 6791. 3. 5 | 9145. 8. 5 |
| Totals for 1937 | 7 | 8 | 7 | 7 | 23 | 1 | 2 | | 311 | 45 | 8 | 33 | 6077 | 3276 | 9353 | 4125 | 13478 | 529 | 137 | 72 | 44 | 404 | 347 | 150 | 10648 | 8 | 65 | 1039 | 115 | 161 | 8127 | 9166 | 139 | 7,249. 0.0 | 147 | 14,218. 0.0 | 44940. 0.0 | 23475. 0.0 | 228 | 87 | 1522.19. 3 | 619. 0.0 | 6249. 1. 9 | 8390. 0.10 |
| Increase | | | 2 | 3 | 2 | | | | 39 | | 1 | | 290 | 235 | 439 | 674 | 235 | 100 | | 33 | 14 | 32 | | 21 | 1741 | 1 | 2 | 39 | | 23 | | | 3 | 22. 0.0 | 980. 0.0 | 500. 0.0 | | 113 | 297.19. 9 | | 542. 1.10 | 755. 7. 7 | | |
| Decrease | 1 | | | | | 1 | | | 16 | | 4 | | 55 | | | | | | | | | | 21 | | | | | | | | | | 6 | | | | 203 | | | 85.14.0 | | | | |

